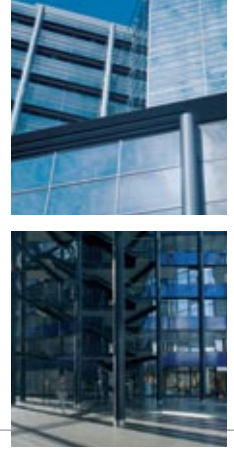


MSL & MPC system

MSL moulded in nylon or PP hinged fitting black and grey RAL7031.
Pull off strength 10kg with FPP21.

MPC nylon compression fitting black. Pull off strength 15kg with FPY20.



MSL		MPC		EC	FCL	nominal size (mm)	OD mm	european (NW) sizes
straight hinged fitting external thread		straight nylon external thread		end cap	nylon conduit clip with integral lid			
Nylon and PP hinged, snap on fittings including locknuts.		Nylon compression fitting, external thread including locknut.		Nylon PA66 end cap to snap over end of conduit and provide a smooth entry bush.	Nylon PA66 conduit clip with integral lid for increased security. Incorporates internal ribs to prevent conduit from pulling through.			
Ext Metric (Nylon)	Ext Metric (PP)	Ext Metric		End Cap	Conduit Clip			
					FCL10	10	10.0	7
						10		7
						11	11.5	8
		MPC-12-M16			FCL13	13	13.0	10
						13		10
				EC16B	FCL16	16	15.8	12
						16		12
						16		12
		MPC-16-M16			FCL16	16	16.1	12
					FCL18	18	18.5	14
						18		14
MSL-21-M20	MSL-21-M20-PP	MPC-20-M20		EC21B	FCL20	20	20.0	
					FCL21	21	21.2	17
						21		17
						21		17
					FCL25	25	25.0	
MSL-26-M25	MSL-26-M25-PP	MPC-25-M25			FCL25	25.4	25.4	22
				EC28B	FCL28	28	28.5	23
						28		23
						28		23
		MPC-32-M32		EC34B	FCL34	34	34.5	29
						34		29
						34		29
				EC42B	FCL42	42	42.5	36
						42		36
						42		36
				EC54B	FCL54	54	54.5	48
						54		48
						54		48
						67	67.0	56

STANDARDS



BS EN IEC 61386

