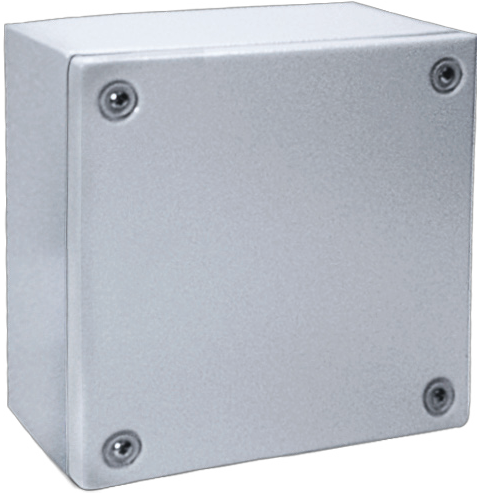


STB204012

STEEL TERMINAL BOX



H	200
W	400
D	120
Weight (kg)	4,09
Part No.	STB204012
EAN	8713574158207

Material: 1.2mm mild steel.

Body: Folded and seam welded. Four 8.5mm diameter holes for wall fixing. Four M6x13 studs for Bottom Profiles/Mounting plate .

Gasket: Sealing is ensured by an injected one piece polyurethane gasket.

Earthing: Earthing studs M8x12mm in body and cover, M8 nuts, earth washers, and earth labels.

Protection: Complies with IP 66, IK 10.

Finish: RAL 7035, structure powder coating.

Approvals: CE, KEMA, cUL, UL, GOST.

Delivery: Base, cover, cover screws, fixing screws, cover plugs, and earthing facilities.



IP66 / IK10