

Partial mounting plate

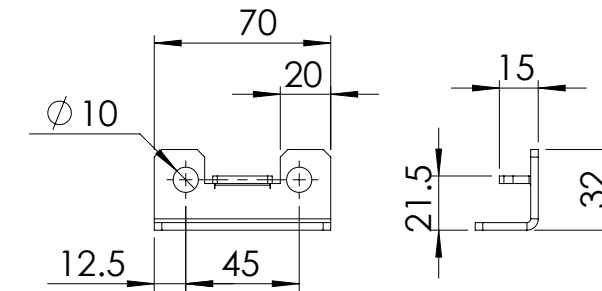
Front view

Side view

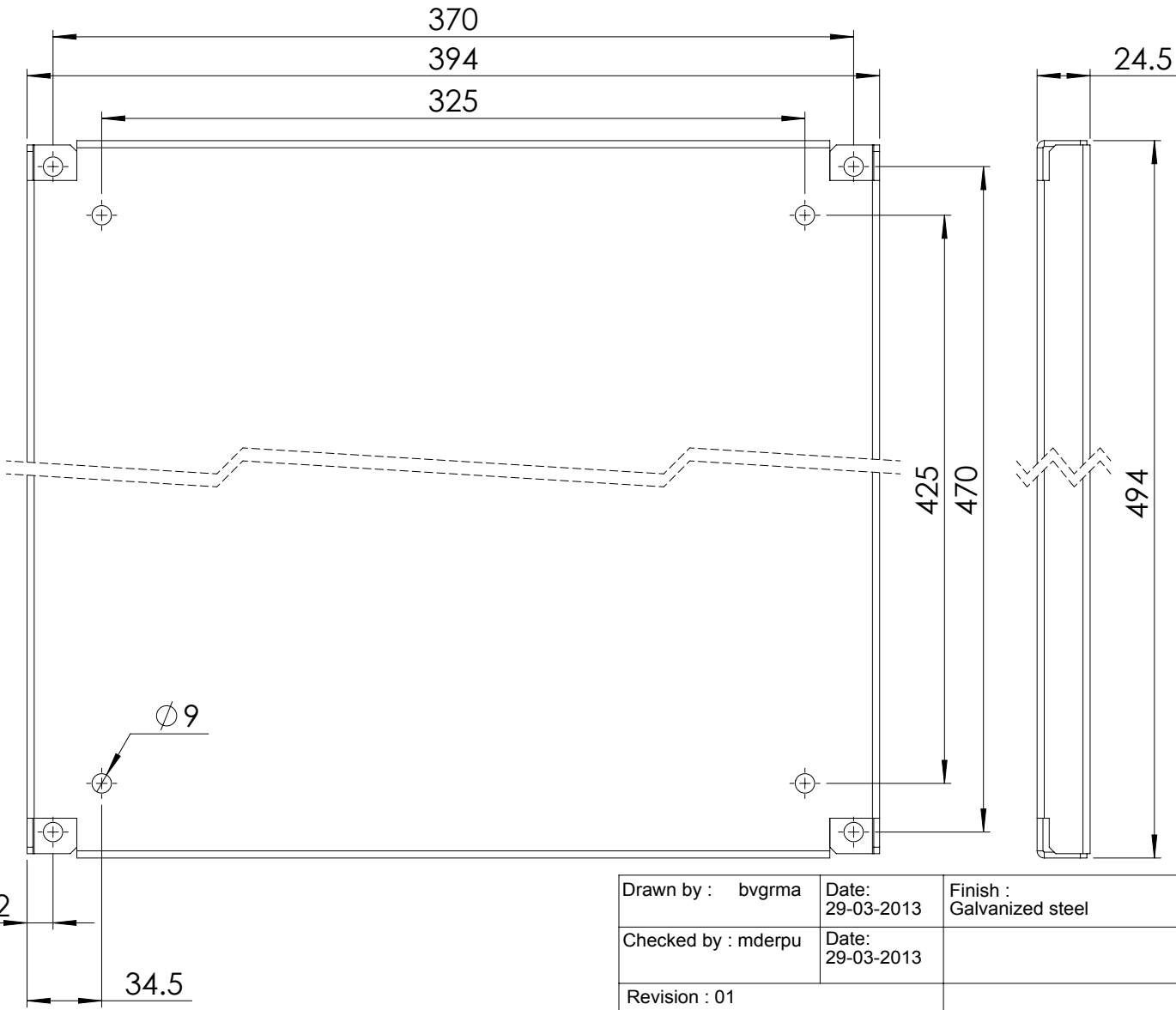
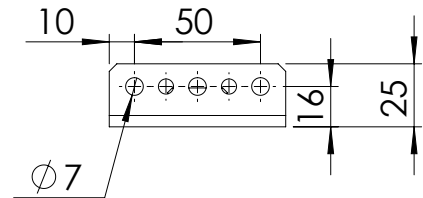
Partial mounting bracket

Front view

Side view



Top view



Drawn by : bvgma	Date: 29-03-2013	Finish : Galvanized steel	SCALE:1:3
Checked by : mderpu	Date: 29-03-2013		
Revision : 01			

General tolerances according to Norm ISO 2768-1		
Fine	Medium	Coarse

	Floor Standing Enclosures Accessories, Partial height mounting plate
	600 mm x 500 mm

Reference number :	A4
MPP0605	
Page 1/1	