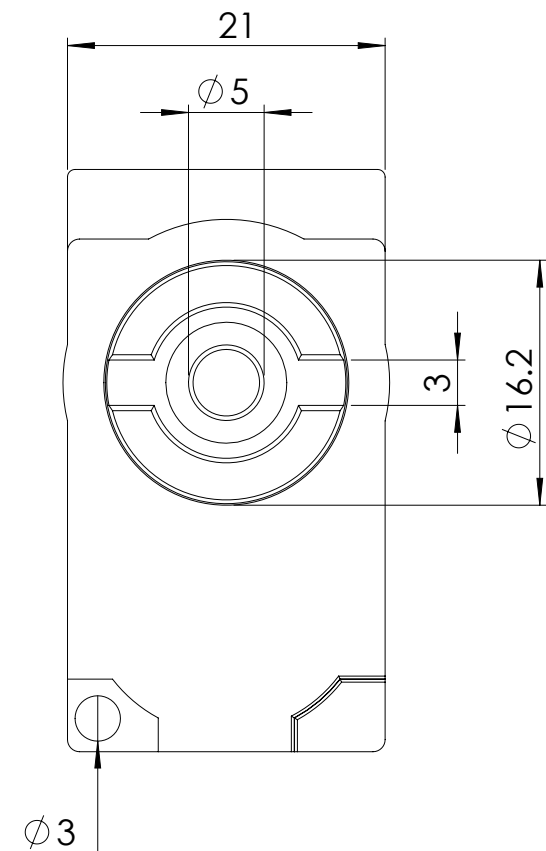
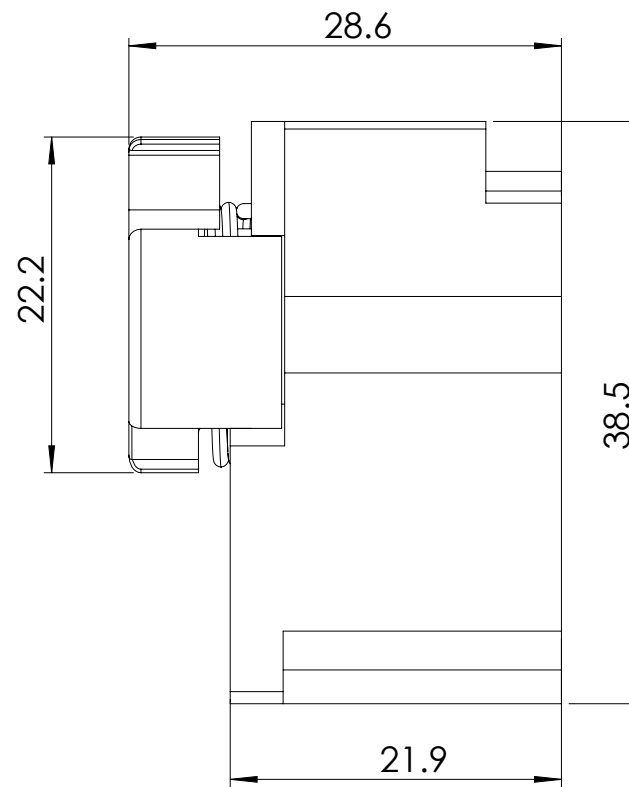


Front view



Side view



Drawn by : bvgma	Date: 22-05-2013	SCALE:2:1	General tolerances according to Norm ISO 2768-1		
Checked by : mderpu	Date: 22-05-2013				
Revision : 01			Fine	Medium	Coarse
		Floor Standing Enclosures Accessories, Profile		Reference number : LSSI529	
		half cylinder locks			
		Double-bit 5 mm		A4	
				Page 1/1	