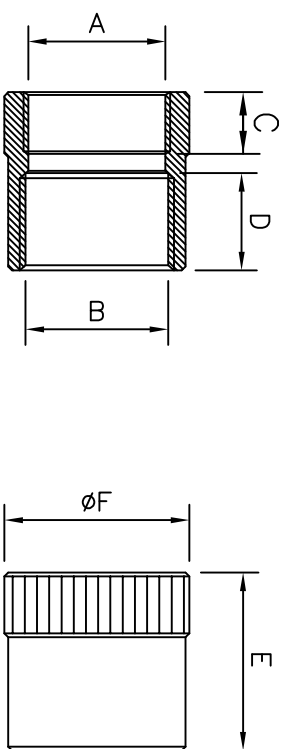


PART No.	THREAD A	THREAD B	NOMINAL DIMENSIONS (mm)						
			C	D	E	F	G		
B/M16-M20/E	M16x1.5	M20x1.5	9.0	12.0	26.0	12.0	22.0		
B/M20-M25/E	M20x1.5	M25x1.5	9.5	11.0	25.5	15.5	27.0		
B/M25-M32/E	M25x1.5	M32x1.5	9.5	12.0	24.5	19.1	34.0		
B/PG9-PG11/E	PG9	PG11	8.0	7.5	18.0	12.0	20.0		
B/PG9-PG13/E	PG9	PG13.5	6.0	12.0	20.0	12.0	22.0		
B/PG11-PG13/E	PG11	PG13.5	7.0	12.0	20.0	15.0	22.0		
B/PG11-PG16/E	PG11	PG16	6.0	12.0	19.0	15.0	Ø24.0		
B/PG13-PG21/E	PG13.5	PG21	6.5	11.0	21.0	16.8	30.0		
B/PG16-PG21/E	PG16	PG21	6.5	11.0	21.0	18.5	30.0		
B/PG21-PG29/E	PG21	PG29	7.0	12.5	23.0	24.0	42.0		
B/PG29-PG36/E	PG29	PG36	8.0	15.0	27.5	32.0	50.0		
B/PG36-PG48/E	PG36	PG48	12.0	12.5	27.0	42.0	Ø63.5		
B/PG7-M16/TC	PG7	M16x1.5	9.0	12.0	25.0	8.0	20.0		
B/PG9-M16/TC	PG9	M16x1.5	9.0	12.0	26.0	12.0	20.0		
B/PG9-M20/TC	PG9	M20x1.5	9.0	12.0	26.0	12.0	22.0		
B/PG11-M20/TC	PG11	M20x1.5	9.0	12.0	26.0	12.0	22.0		
B/PG13-M20/TC	PG13.5	M20x1.5	9.0	13.0	26.0	15.5	22.0		
B/PG16-M25/TC	PG16	M25x1.5	9.0	13.0	26.0	18.0	27.0		
B/PG21-M32/TC	PG21	M32x1.5	10.0	12.0	26.0	32.5	34.0		
B/PG29-M40/TC	PG29	M40x1.5	9.8	16.7	28.5	30.5	Ø44.0		
B/M16-PG9/TC	M16x1.5	PG9	9.0	12.0	26.0	12.0	22.0		
B/M20-PG11/TC	M20x1.5	PG11	9.5	7.5	20.0	16.0	24.0		
B/M20-PG13/TC	M20x1.5	PG13.5	12.5	12.0	28.5	15.5	22.0		
B/M20-PG16/TC	M20x1.5	PG16	12.5	13.0	29.5	15.5	25.4		
B/M20-PG21/TC	M20x1.5	PG21	9.5	12.0	24.5	15.5	31.8		
B/M25-PG21/TC	M25x1.5	PG21	9.5	12.0	24.5	19.1	32.0		
B/M32-PG29/TC	M32x1.5	PG29	12.0	9.5	25.0	26.5	42.0		
B/Ø50-M16/TC	1/2 NPT	M16x1.5	10.0	10.0	25.5	14.0	22.0		
B/Ø50-M20/TC	1/2 NPT	M20x1.5	9.5	12.0	25.5	16.0	22.0		
B/M20-Ø50/TC	M20x1.5	1/2 NPT	9.5	12.0	25.5	15.5	24.5		
B/PG11-Ø50/TC	PG11	1/2 NPT	7.5	12.0	22.5	13.3	24.0		
B/PG16-Ø50/TC	PG16	1/2 NPT	8.0	12.0	23.0	18.2	25.4		



PART No.	THREAD A	THREAD B	NOMINAL DIMENSIONS (mm)				
			C	D	E	F	
B/U063-M16/TC	5/8"-24	M16x1.5	8.0	13.0	23.0	20.0	
B/U075-M16/TC	3/4"-20	M16x1.5	8.0	13.0	23.0	21.5	
B/U075-M20/TC	3/4"-20	M20x1.5	8.0	12.5	23.0	24.0	
B/U088-M20/TC	7/8"-20	M20x1.5	8.0	14.0	26.2	27.0	
B/U100-M20/TC	1"-20	M20x1.5	8.0	14.0	26.2	29.5	
B/U100-M25/TC	1"-20	M25x1.5	8.0	17.0	30.0	30.0	
B/U119-M20/TC	1 3/16"-18	M20x1.5	8.0	14.0	32.0	34.0	
B/U119-M25/TC	1 3/16"-18	M25x1.5	11.0	18.0	32.0	34.0	
B/U144-M25/TC	1 7/16"-18	M25x1.5	10.0	18.5	40.0	41.0	
B/U144-M32/TC	1 7/16"-18	M32x1.5	8.0	14.0	24.5	38 AF	



BIRMINGHAM ENGLAND

This drawing/document is a COPYRIGHT and the property of ADAPTALLEX LIMITED. It must not be copied (in whole or part) used for manufacture or otherwise disclosed without prior written consent of the company. The Company's policy is one of continuous improvement and it therefore reserves the right to change specifications at any time without notice.

MATERIAL BRASS

FINISH NICKEL PLATE

COLOUR

DATE 21/2/02

CHARTS 068

TITLE

THREAD ENLARGERS + CONVERTERS