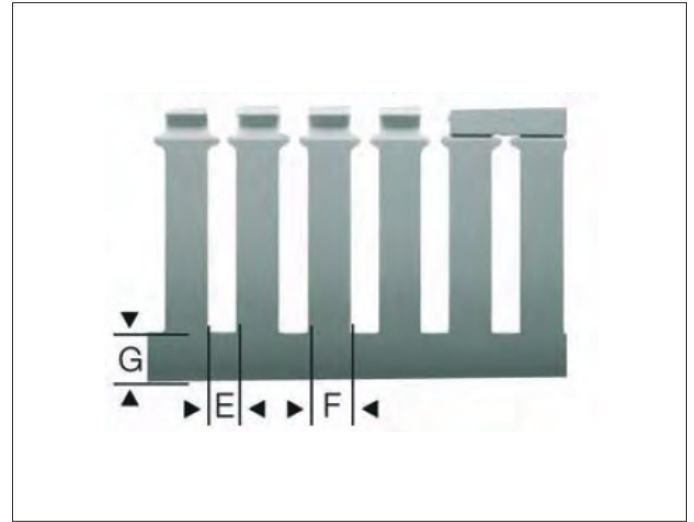
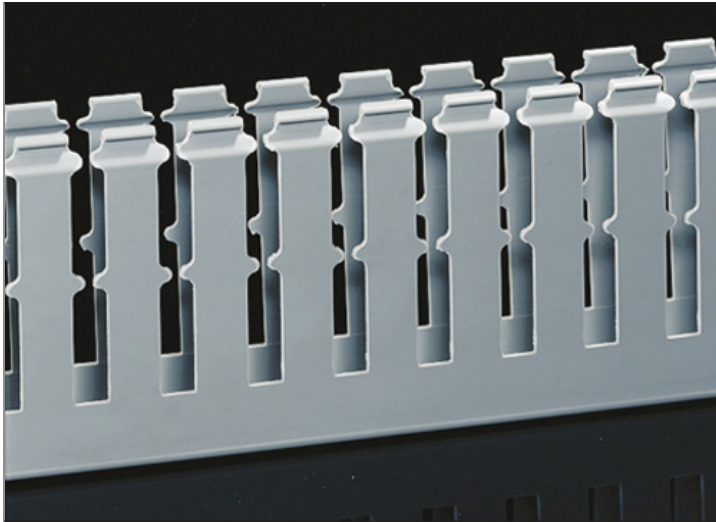


TECHNICAL SPECIFICATION • IBOCO T1-F DUCT SERIES



DESCRIPTION

The T1-F duct is ideal for wiring large sized cables usually employed in power panels. Narrow fingers for easier vertical wiring before the cover is mounted, for correct wire positioning and circuit separation. With a thick side and base, it has a strong construction and maximum application stability, very good holding under heavy wiring and longer durability and reliability. Available in a wide range of heights for space optimisation inside the electric panel. Recommended fixing method; Betaduct rivets and washers.

APPLICATION

Ideal for wiring large sized cables usually employed in power panels. With thick side and base, it has a strong construction and maximum application stability, very good holding also under heavy wiring and longer durability and reliability.

SPECIFICATION

Material: Rigid Self-extinguishing PVC

Colour Options: Grey RAL 7030

Standard Length: 2 Metres

Standard Unit Supplied: Duct complete with cover

Standards: CSA, UL Approved



PART NUMBERS & SIZES

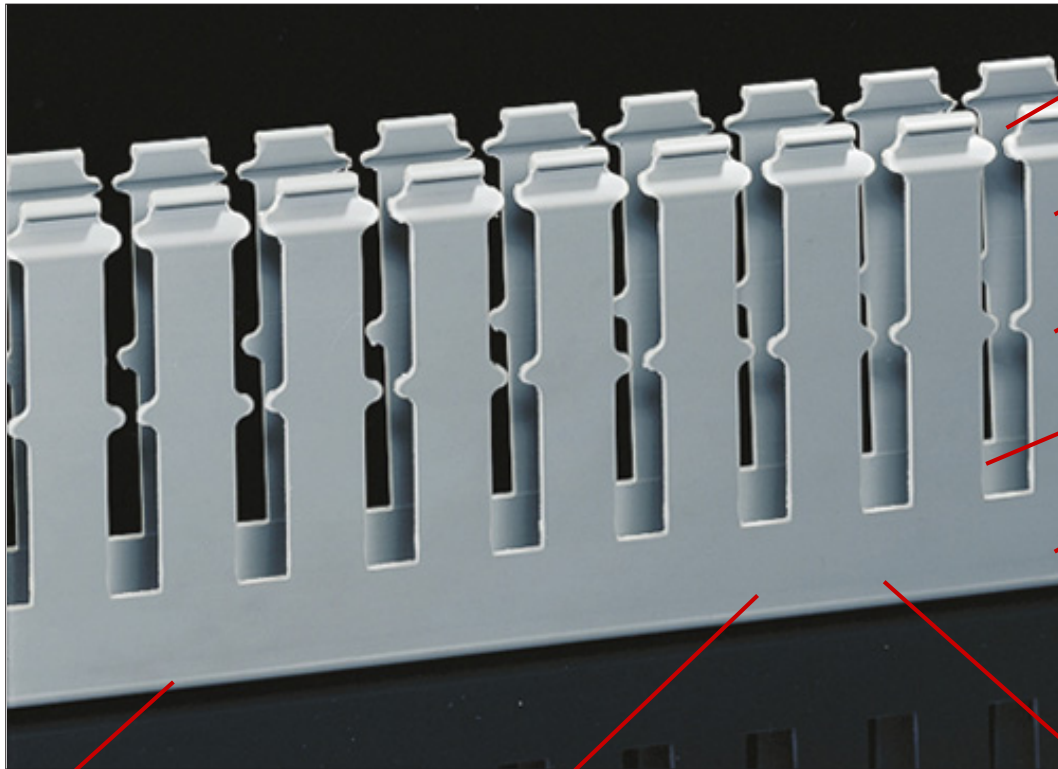
PART NUMBER	BASE x HEIGHT (mm)	E	F	G	SECTION (mm ²)	PACK QTY (m)
T1-F 25X80 G	25 x 80	8	12	16	1550	48
T1-F 40X80 G	40 x 80	8	12	16	2700	32
T1-F 60X80 G	60 x 80	8	12	16	4140	24
T1-F 80X80 G	80 x 80	8	12	16	5660	24
T1-F 100X80 G	100 x 80	8	12	16	7150	16
T1-F 120X80 G	120 x 80	8	12	16	8630	16
T1-F 40X100 G	40 x 100	8	12	16	3310	16
T1-F 60X100 G	60 x 100	8	12	16	5140	8
T1-F 80X100 G	80 x 100	8	12	16	7020	8
T1-F 100X100 G	100 x 100	8	12	16	8920	8
T1-F 150X100 G	150 x 100	8	12	16	13570	8

IBOCO

Wiring Ducts and Components

BOCCHIOTTI wiring systems feature excellent assembly functionality and are ideal for any type of power and control panel where performance remains unaltered over time even under the heaviest operating conditions.

TECHNICAL SPECIFICATION • IBOCO T1-F DUCT SERIES



- Restricted slot design, so the wire is retained in the slot.
- Smooth round edges and fingers.
- Narrow finger design
- Two predetermined break lines.
- Rigid PVC material.

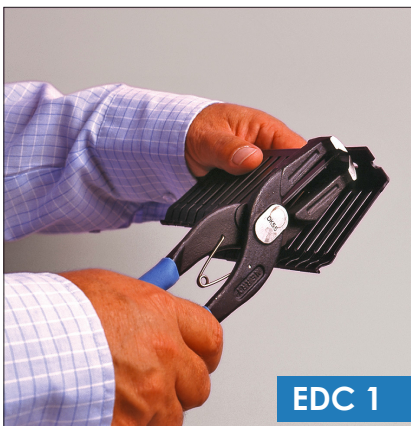
To remove the fingers flush with the base use the **EDNT 1** nibbling tool to cut the slots and then the **EDC 1** to remove the fingers.

Non-slip cover, for easy assembly and disassembly. Position cover over the duct with light pressure and it will clip into place over all the fingers.

Base slots to DIN standard



EDNT 1



EDC 1

FEATURES	BENEFITS
Rigid PVC material	Self-extinguishing PVC.
Restricted slot design	Saves time during installation, once wires are installed they will remain in the slot with or without cover.
Non-slip, flush cover	Once installed lid will not slip. Easy clip-on assembly and disassembly.
Narrow finger design	For easier vertical wiring before the cover is mounted, for correct wire positioning and circuit separation.
Two predetermined break lines	To facilitate a clean, precise break off and removal of sidewall finger and base segments.
Smooth round edges	Free from burrs or sharp edges that could lead to abrasions on hands and cables.
Base slots to DIN 43659	Staggered mounting holes, conforms to DIN standard.
Associated cutting tools: EDNT 1, EDC 1.	For clean, precise cutting of trunking fingers.