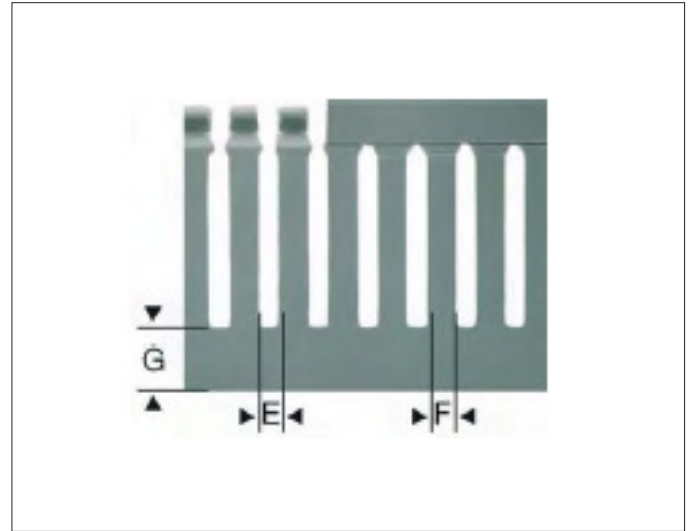
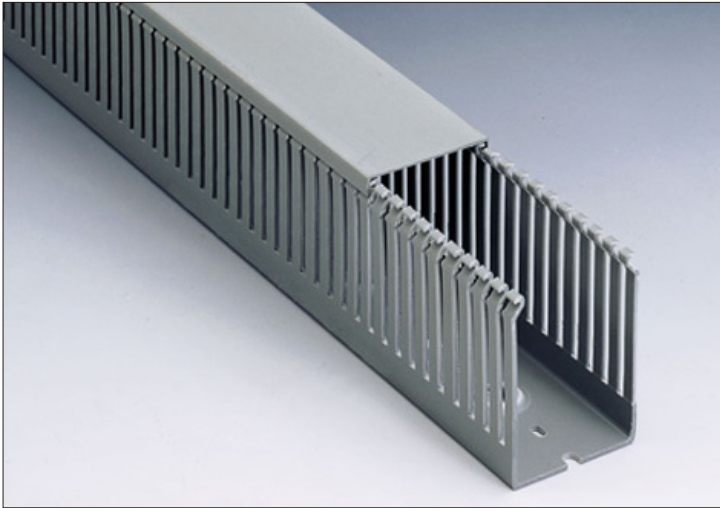


TECHNICAL SPECIFICATION • IBOCO T1-E DUCT SERIES



DESCRIPTION

THE T1-E duct is commonly employed in electric control panels. It has restricted slot opening and its strong and robust due to its thick base and side construction. Perfect solidity is also guaranteed in cantilevered applications. Made of material with more than 3000NPa modules of elasticity, it allows for repeated opening and closing of the duct fingers during wiring operations even at low temperature, without breaking. Recommended fixing method; Betaduct rivets and washers.

APPLICATION

Ideal for wiring large sized cables usually employed in power panels. With thick side and base, it has a strong construction and maximum application stability, very good holding also under heavy wiring and longer durability and reliability.

SPECIFICATION

Material: Rigid Self-extinguishing PVC

Colour Options: Grey RAL 7030

Standard Length: 2 Metres

Standard Unit Supplied: Duct complete with cover

Standards: CSA, UL Approved

PART NUMBERS & SIZES

PART NUMBER	BASE x HEIGHT (mm)	E	F	G	SECTION (mm ²)	PACK QTY (m)
T1-E 25X40 G	25 x 40	4	6	12	820	72
T1-E 40X40 G	40 x 40	4	6	12	1360	40
T1-E 60X40 G	60 x 40	4	6	12	1970	24
T1-E 80X40 G	80 x 40	4	6	12	2680	24
T1-E 100X40 G	100 x 40	4	6	12	3380	16
T1-E 25X60 G	25 x 60	4	6	14	1190	48
T1-E 40X60 G	40 x 60	4	6	14	2040	36
T1-E 60X60 G	60 x 60	4	6	14	3080	24
T1-E 80X60 G	80 x 60	4	6	14	4150	24
T1-E 100X60 G	100 x 60	4	6	14	5250	16
T1-E 120X60 G	120 x 60	4	6	14	6300	16
T1-E 25X80 G	25 x 80	4	6	16	1550	48
T1-E 40X80G	40 x 80	4	6	16	2700	32
T1-E 60X80 G	60 x 80	4	6	16	4140	24
T1-E 80X80 G	80 x 80	4	6	16	5660	24
T1-E 100X80 G	100 x 80	4	6	16	7150	16
T1-E 120X80 G	120 x 80	4	6	16	8630	16
T1-E 100X100 G	100 x 100	4	6	18	8920	8

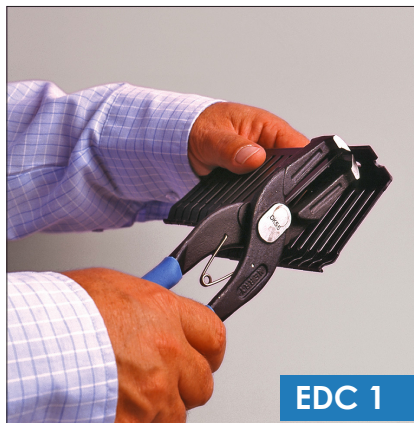
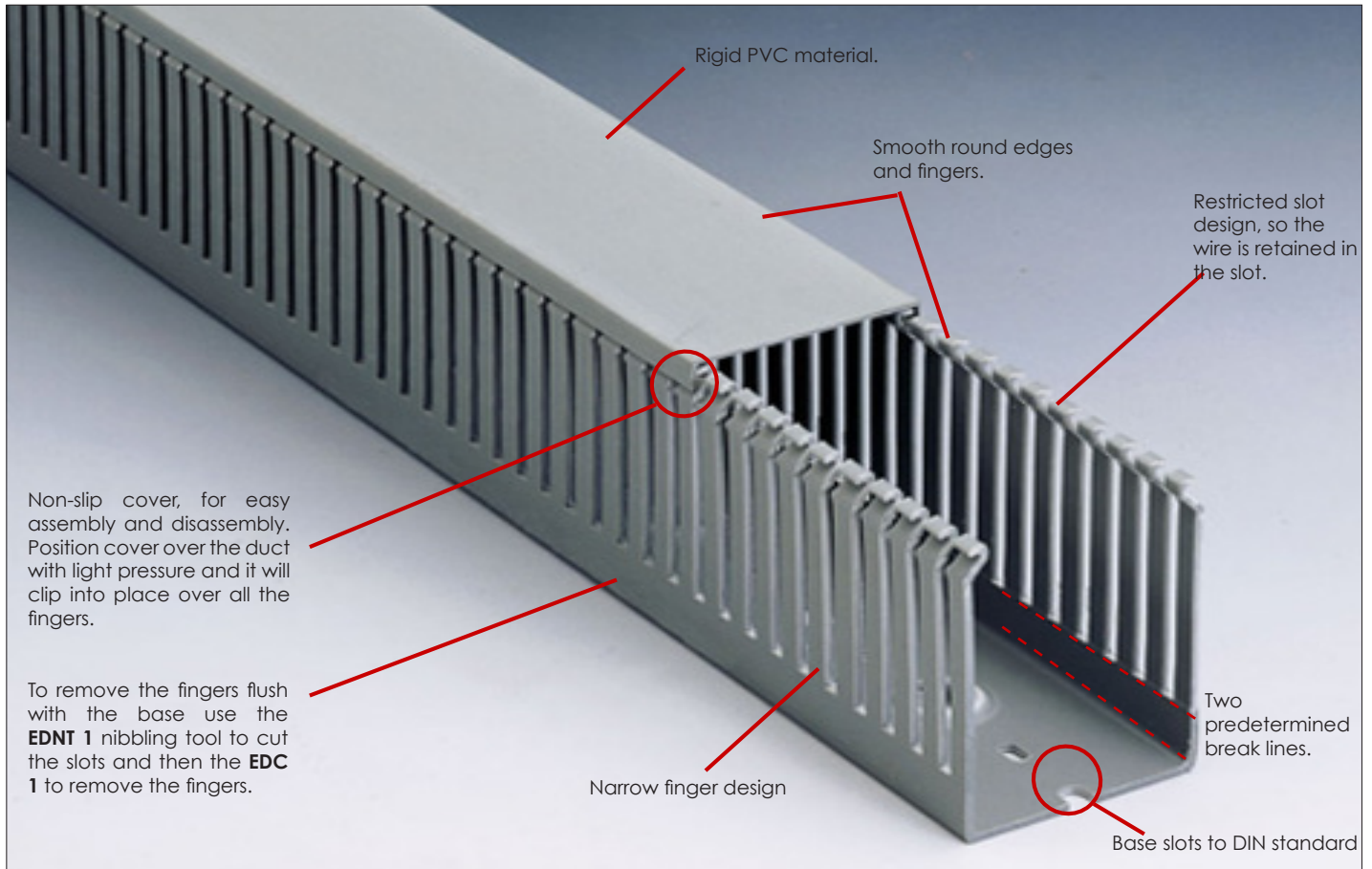


IBOCO

Wiring Ducts and Components

BOCCHIOTTI wiring systems feature excellent assembly functionality and are ideal for any type of power and control panel where performance remains unaltered over time even under the heaviest operating conditions.

TECHNICAL SPECIFICATION • IBOCO T1-E DUCT SERIES



FEATURES	BENEFITS
Rigid PVC material	Self-extinguishing PVC.
Restricted slot design	Saves time during installation, once wires are installed they will remain in the slot with or without cover.
Non-slip, flush cover	Once installed lid will not slip. Easy clip-on assembly and disassembly.
Narrow finger design	For easier vertical wiring before the cover is mounted, for correct wire positioning and circuit separation.
Two predetermined break lines	To facilitate a clean, precise break off and removal of sidewall finger and base segments.
Smooth round edges	Free from burrs or sharp edges that could lead to abrasions on hands and cables.
Base slots to DIN 43659	Staggered mounting holes, conforms to DIN standard.
Associated cutting tools: EDNT 1, EDC 1.	For clean, precise cutting of trunking fingers.