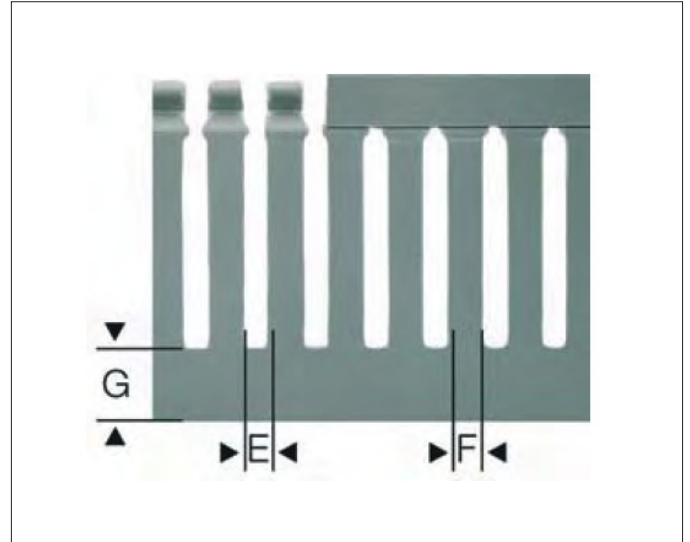
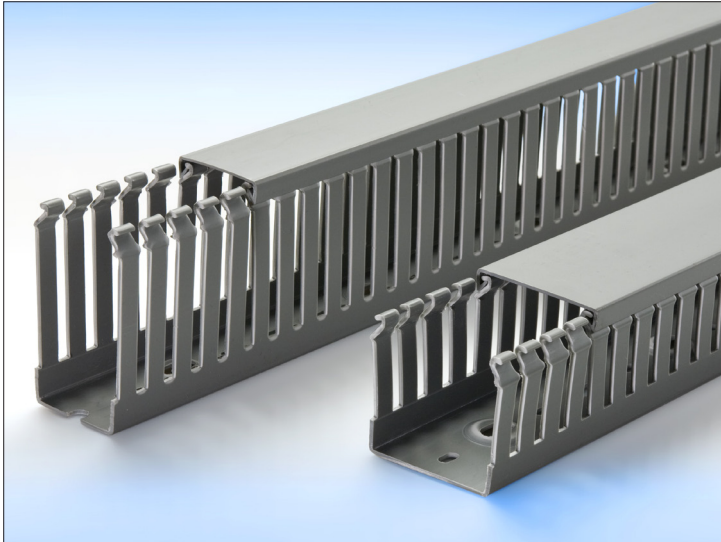


TECHNICAL SPECIFICATION • IBOCO TD DUCT SERIES



DESCRIPTION

The TD duct features a 12, 5 module according to DIN 43659 and CEI 23-22 standards which is particularly suitable for use with other DIN 12, 5 equipment for perfect size interfacing. Optimized duct size/wire retention ratio and perfectly rounded finger edges for safe operations even in installations with difficult access. Recommended fixing method; Betaduct rivets and washers.

APPLICATION

Ideal for wiring large sized cables usually employed in power panels. With thick side and base, it has a strong construction and maximum application stability, very good holding also under heavy wiring and longer durability and reliability.

SPECIFICATION

Material:	Rigid Self-extinguishing PVC
Colour Options:	Grey RAL 7030
Standard Length:	2 Metres
Standard Unit Supplied:	Duct complete with cover
Standards:	CSA, UL Approved

PART NUMBERS & SIZES

PART NUMBER	BASE x HEIGHT (mm)	E	F	G	SECTION (mm ²)	PACK QTY (m)
TD 25X25 G	25 x 25	5	7.5	7	460	48
TD 37.5X25 G	37.5 x 25	5	7.5	7	660	64
TD 50X37.5 G	50 x 37.5	5	7.5	10	1490	24
TD 25X50 G	25 x 50	5	7.5	11	990	48
TD 37.5X50 G	37.5 x 50	5	7.5	11	1500	24
TD 50X50 G	50 x 50	5	7.5	11	2060	24
TD 75X50 G	75 x 50	5	7.5	11	3200	24
TD 100X50 G	100 x 50	5	7.5	11	4330	16
TD 125X50 G	125 x 50	5	7.5	11	5370	16
TD 37.5X75 G	37.5 x 75	5	7.5	13	2330	24
TD 50X75 G	50 x 75	5	7.5	13	3200	24
TD 75X75 G	75 x 75	5	7.5	13	4940	16
TD 100X75 G	100 x 75	5	7.5	13	6650	16
TD 125X75 G	125 x 75	5	7.5	13	8310	12
TD 75X125 G	75 x 75	5	7.5	20	8398	12
TD 100X125 G	100 x 75	5	7.5	29	11415	8

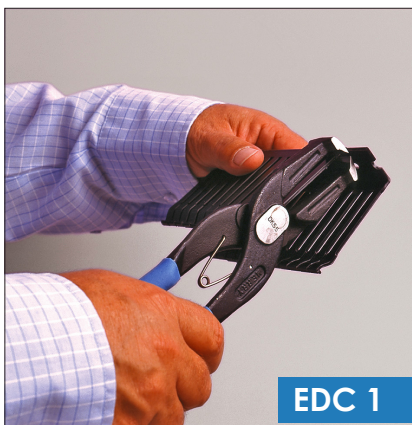
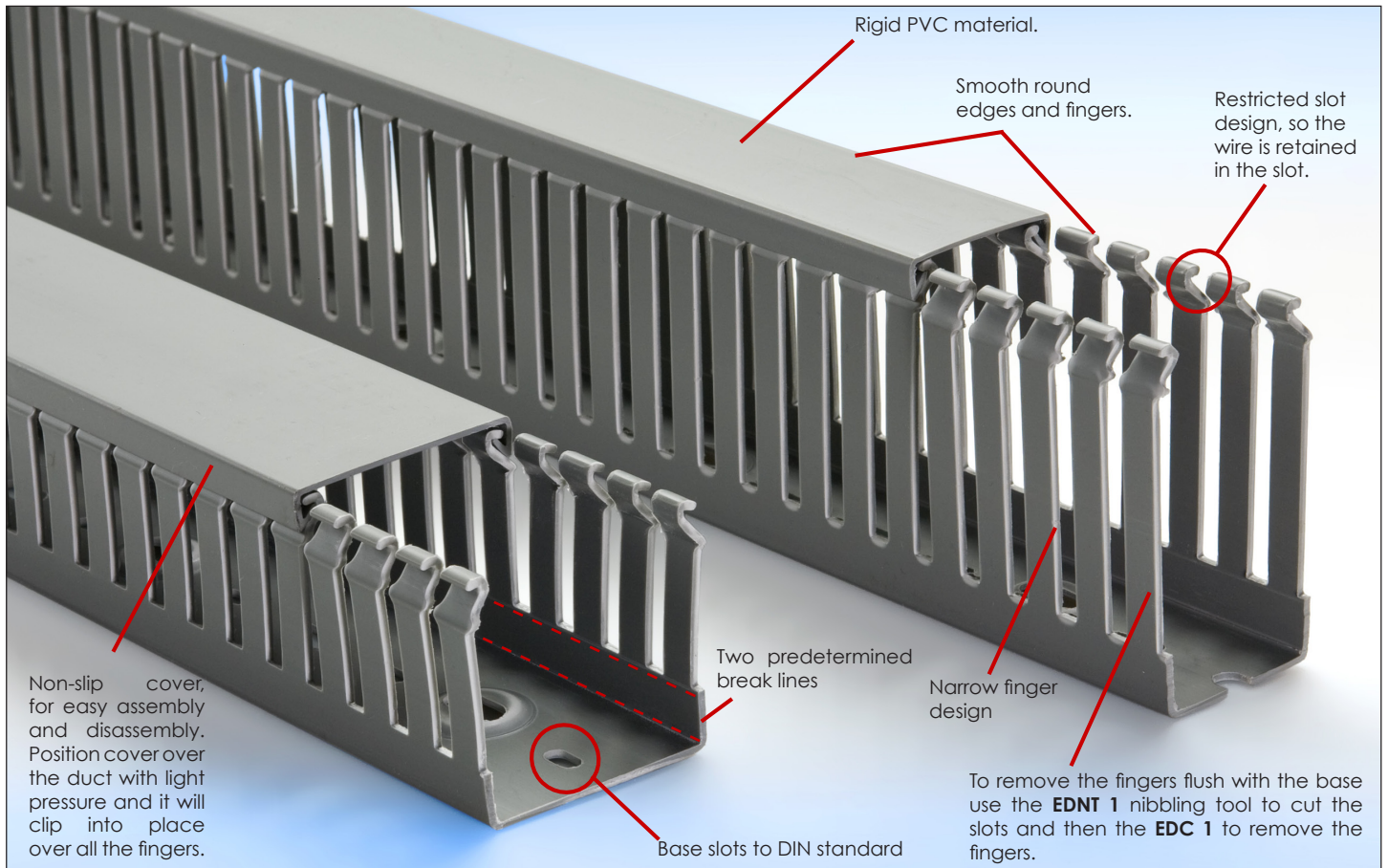


IBOCO

Wiring Ducts and Components

BOCCHIOTTI wiring systems feature excellent assembly functionality and are ideal for any type of power and control panel where performance remains unaltered over time even under the heaviest operating conditions.

TECHNICAL SPECIFICATION • IBOCO TD DUCT SERIES



FEATURES	BENEFITS
Rigid PVC material	Self-extinguishing PVC.
Restricted slot design	Saves time during installation, once wires are installed they will remain in the slot with or without cover.
Non-slip, flush cover	Once installed lid will not slip. Easy clip-on assembly and disassembly.
Narrow finger design	For easier vertical wiring before the cover is mounted, for correct wire positioning and circuit separation.
Two predetermined break lines.	For breaking off and removal of sidewall finger and base segments.
Smooth round edges	Free from burrs or sharp edges that could lead to abrasions on hands and cables.
Base slots to DIN 43659	Staggered mounting holes, conforms to DIN standard.
Associated cutting tools: EDNT 1, EDC 1.	For clean, precise cutting of trunking fingers.