

MELSEC iQ-R Series  
iQ Platform-compatible PAC

Concise

Bridging the next generation of automation

**MELSEC iQ-R**  
series



evolutionary

**iQ** Platform

# Revolutionary, next-generation controllers building a new era in automation

## MELSEC iQ-R series

As the core for next-generation automation environment, realizing an automation controller with added value while reducing TCO\*

To succeed in highly competitive markets, it's important to build automation systems that ensure high productivity and consistent product quality. The MELSEC iQ-R Series has been developed from the ground up based on common problems faced by customers and rationalizing them into seven key areas: Productivity, Engineering, Maintenance, Quality, Connectivity, Security and Compatibility. Mitsubishi Electric is taking a three-point approach to solving these problems: **Reducing TCO\***, increasing **Reliability** and **Reuse** of existing assets.

As a bridge to the next generation in automation, the MELSEC iQ-R Series is a driving force behind **revolutionary** progress in the future of manufacturing.

\*TCO: Total cost of ownership

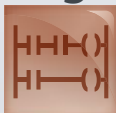
### Productivity



**Improve productivity through advanced performance/ functionality**

- New high-speed system bus realizing shorter production cycle
- Super-high-accuracy motion control utilizing advanced multiple CPU features
- Inter-modular synchronization resulting in increased processing accuracy

### Engineering



**Reducing development costs through intuitive engineering**

- Intuitive engineering environment covering the product development cycle
- Simple point-and-click programming architecture
- Understanding globalization by multiple language support

### Maintenance



**Reduce maintenance costs and downtime utilizing easier maintenance features**

- Visualize entire plant data in real-time
- Extensive preventative maintenance functions embedded into modules





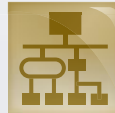
## Quality



**Reliable and trusted MELSEC product quality**

- Robust design ideal for harsh industrial environments
- Improve and maintain actual manufacturing quality
- Conforms to main international standards

## Connectivity



**Seamless network reduces system costs**

- Seamless connectivity within all levels of manufacturing
- High-speed and large data bandwidth ideal for large-scale control systems
- Easy connection of third-party components utilizing device library

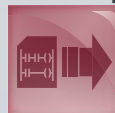
## Security



**Robust security that can be relied on**

- Protect intellectual property
- Unauthorized access protection across distributed control network

## Compatibility



**Extensive compatibility with existing products**

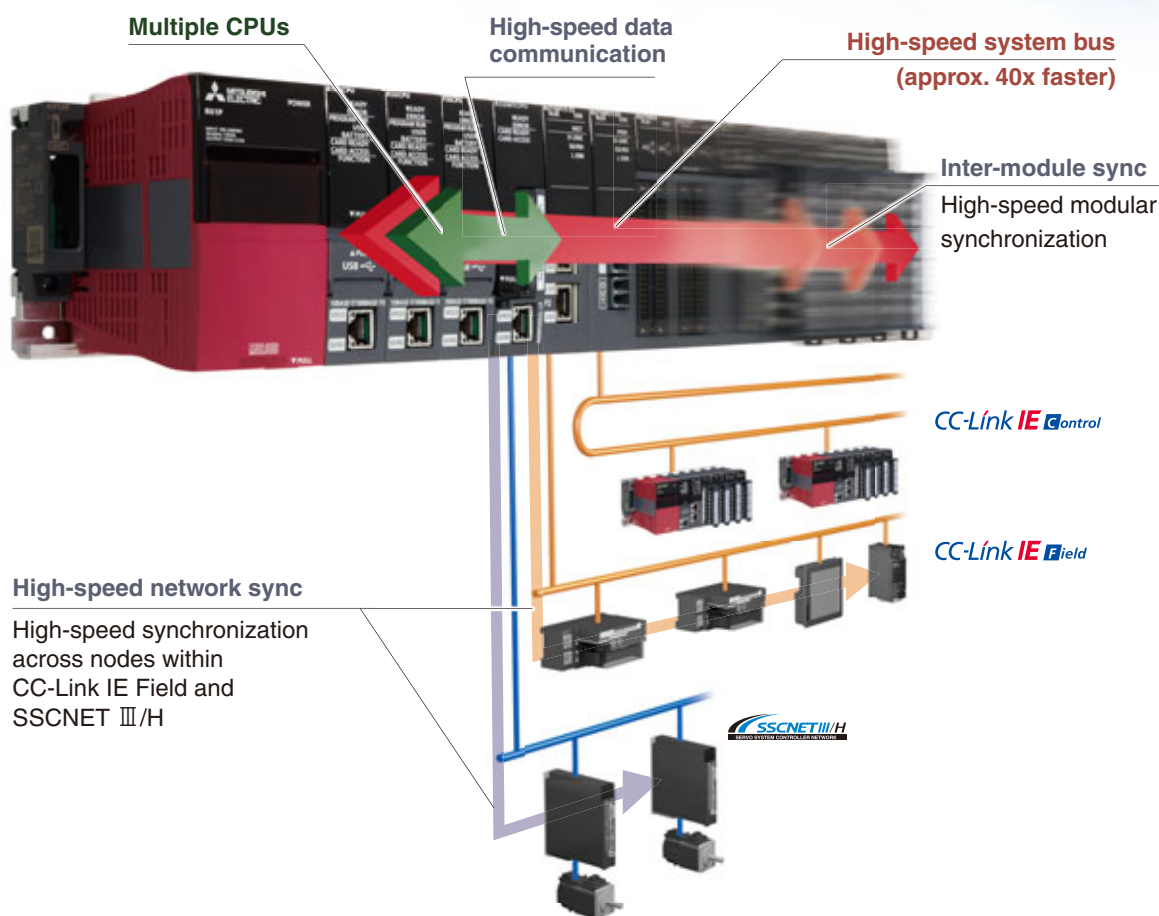
- Utilize existing assets while taking advantage of cutting-edge technology
- Compatible with most existing MELSEC-Q Series I/O



## Productivity

### Improve productivity through advanced performance/functionality

Integrating high-performance capabilities based on the high-end iQ-R system bus, high-speed network, and an advanced motion control system; applications requiring these characteristics can be easily realized using the MELSEC iQ-R Series as the core of the automation system.



### New high-speed system bus realizes improved production cycle

The newly developed high-speed system bus is 40-times faster compared to existing models, realizing very fast and large-capacity data processing between modules (network, I/O, multi-CPU, etc.), enabling the optimum utilization of MELSEC iQ-R Series performance and functionality.

High-speed system bus  
**40x faster<sup>\*1</sup>**

### Multi-CPU system realizes very accurate motion control

By supporting synchronized data communications between the programmable controller CPU and motion CPU via the high-speed system bus, performance is improved by up to four times compared to existing models, easily realizing super-high motion control accuracy.

Synchronized data exchange with motion CPU  
**4x faster<sup>\*2</sup>**

<sup>\*1</sup>: Compared to MELSEC-Q Series.  
<sup>\*2</sup>: Compared to Q173DSCPU/Q172DSCPU.

## Inter-modular synchronization realizes increased processing accuracy

### More flexible control over performance

Realizing high processing accuracy could not be any simpler when utilizing the inter-modular synchronization feature, which enables precise data synchronization between controller CPUs and various interface modules via the high-speed system bus (backplane). In addition, network level synchronization

(both CC-Link IE Field and SSCNET III/H) is now possible, realizing deterministic performance by ensuring synchronization between nodes without being influenced by varying network transmission delays.

## New controller performance architecture further reduces H/W costs

### High-speed processing of structured programs

The processing performance of the controller CPU has been substantially enhanced thanks to the newly designed CPU engine. The memory consumption for program and internal devices used in function block (FB) and structured text (ST) programs have been improved. This results in one CPU being able to do the job that used to require several CPUs in order to achieve the expected performance level and memory capacity.

### Built-in database eliminates the need for a PC-based database server

Recipe data and production results data, previously managed using a database server, can now be managed via the database in the programmable controller. Use of dedicated commands for the built-in database makes it easy to search, add and update data on the fly. Furthermore, the import/export correlation with spreadsheet software is made easier.

### Realize high-speed system performance

Approx. **8X** faster than QCPU\*3



- Realizes high-speed control performance
- Inherits MELSEC-Q Series functions
- Large-capacity memory ideal for large-scale control



### Data management realized with built-in database



- Recipe
- Production data
- Easy to switch between recipes
- Realize product batch control
- Efficiently switch between systems

LD instruction speed	PC MIX*4 (instructions/μs)	Fixed-cycle interrupt program	ST instruction (IF text, bit condition)	Program capacity
<b>0.98 ns</b>	<b>419</b>	<b>50 μs</b>	<b>8 ns</b>	<b>1200K steps</b>

\*3: Based on a typical application example, the system benchmark test measures the CPU scan time, taking into consideration the network refresh time and monitoring processing time with external devices as compared to Universal model QCPU (QnUDEHCPU).

\*4: Average number of instructions such as for basic instructions and data processing executed in 1μs (the larger the value, the faster the processing speed).



# Engineering

## Reducing development costs through intuitive engineering

The engineering software is sometimes considered a fundamental part of the control system in addition to the hardware components. The core of the system, it includes various steps of the product life cycle, from the design stage all the way to commissioning and maintenance of the control system. Today, intuitive, easy-to-use software suites are expected as a standard for modern manufacturing needs. GX Works3 is the latest generation of programming and maintenance software offered by Mitsubishi Electric specifically designed for the MELSEC iQ-R Series control system. It includes many new features and technologies to ensure a trouble-free engineering environment solution.

## Intuitive engineering software covering the product development cycle

### Graphic-based configuration realizing easier programming

Various intuitive features such as graphic-based system configuration and an extensive module library (module label/FB) provided as standard.

### Integrated motion-control system configuration

From setting simple motion module parameters and positioning data setup to servo amplifier configuration, everything is packaged into an easy-to-use engineering environment.

### Conforms to IEC61131-3 (JIS B3503)

GX Works3 realizes structured programming such as ladder and ST, making project standardization across multiple users even easier.

## Simple point and click programming architecture

**System design** / **Programming** / **Debug/maintenance**  
**Straightforward graphic based system configuration design**

- Simply drag and drop from the module list to easily create system configuration
- Directly setup parameters for each module
- Automatically reflect changes in the layout to the module parameters

**System design** / **Programming** / **Debug/maintenance**  
**MELSOFT library enables efficient programming through “Module Label/FB”**

- Assign convenient label names to internal devices, rather than manually entering a device name every time.
- Simply drag & drop module FBs from the MELSOFT Library directly into the ladder program, making programming even easier.

**System design** / **Programming** / **Debug/maintenance**  
**Extensive version control features**

- Flexibly register program change (historical) save points
- Easily visualize and confirm program changes

### Simple motion setting tool

Easily configure the simple motion module with this convenient integrated tool.

### Tab view multiple editors

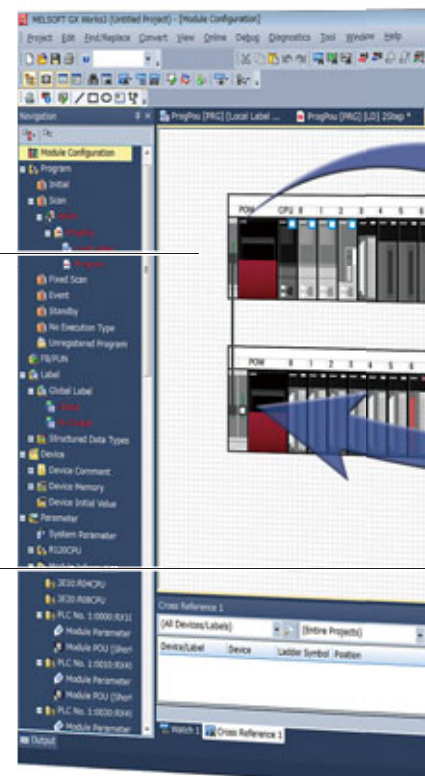
Conveniently work on multiple editors without having to switch between software screens.

### Module configuration

Easily parameterize each module directly from the configuration editor.

### Module list

Simply drag & drop modules directly into the module configuration.



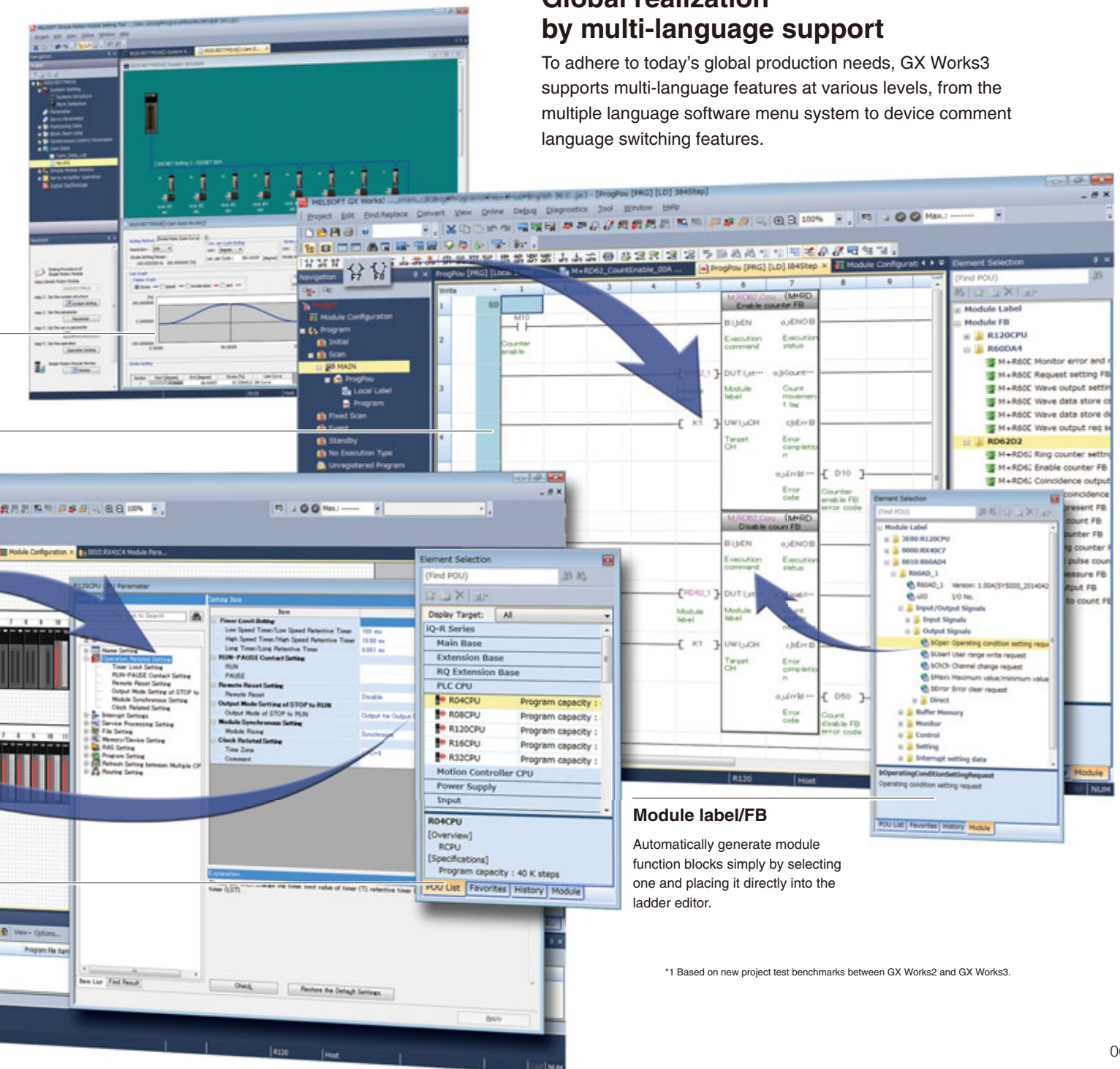
# GX Works3

One Software, Many Possibilities

Reduce engineering time by 60%\*1

## Global realization by multi-language support

To adhere to today's global production needs, GX Works3 supports multi-language features at various levels, from the multiple language software menu system to device comment language switching features.



### Module label/FB

Automatically generate module function blocks simply by selecting one and placing it directly into the ladder editor.

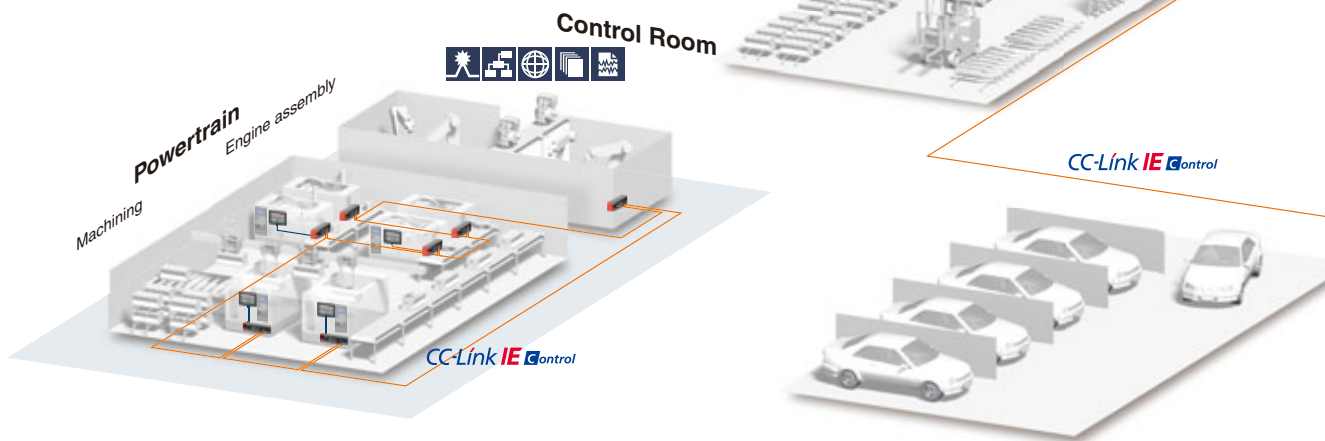
\*1 Based on new project test benchmarks between GX Works2 and GX Works3.



# Maintenance

## Reduce maintenance costs and downtime utilizing easier maintenance features

A manufacturing plant is seldom stopped or taken offline and continuously produces the desired product or component. However, the control system occasionally requires maintenance; for example, at the time of a faulty product or system upgrade for manufacturing a new or updated component. At that time, thanks to the extensive maintenance functions embedded in the hardware and software, the user can trust the control system to handle transition into/out of the maintenance period for both preventive and post maintenance.



### Preventive maintenance Output module

#### Prevent system downtime with relay monitoring

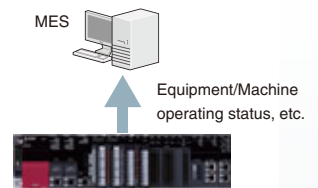
- Monitors relay switching amount
- Check relay condition from GOT (HMI)
- Plan module maintenance prior to malfunction of relay



### Preventive maintenance MES interface module

#### Direct access to enterprise level

- Registers device values directly into database
- Visible shop floor data enables actions before event occurs



### Preventive maintenance Output module

#### Output module protective functions

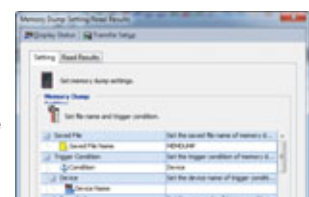
- Overcurrent and heat protection
- Prevents output module malfunction



### Corrective maintenance CPU module

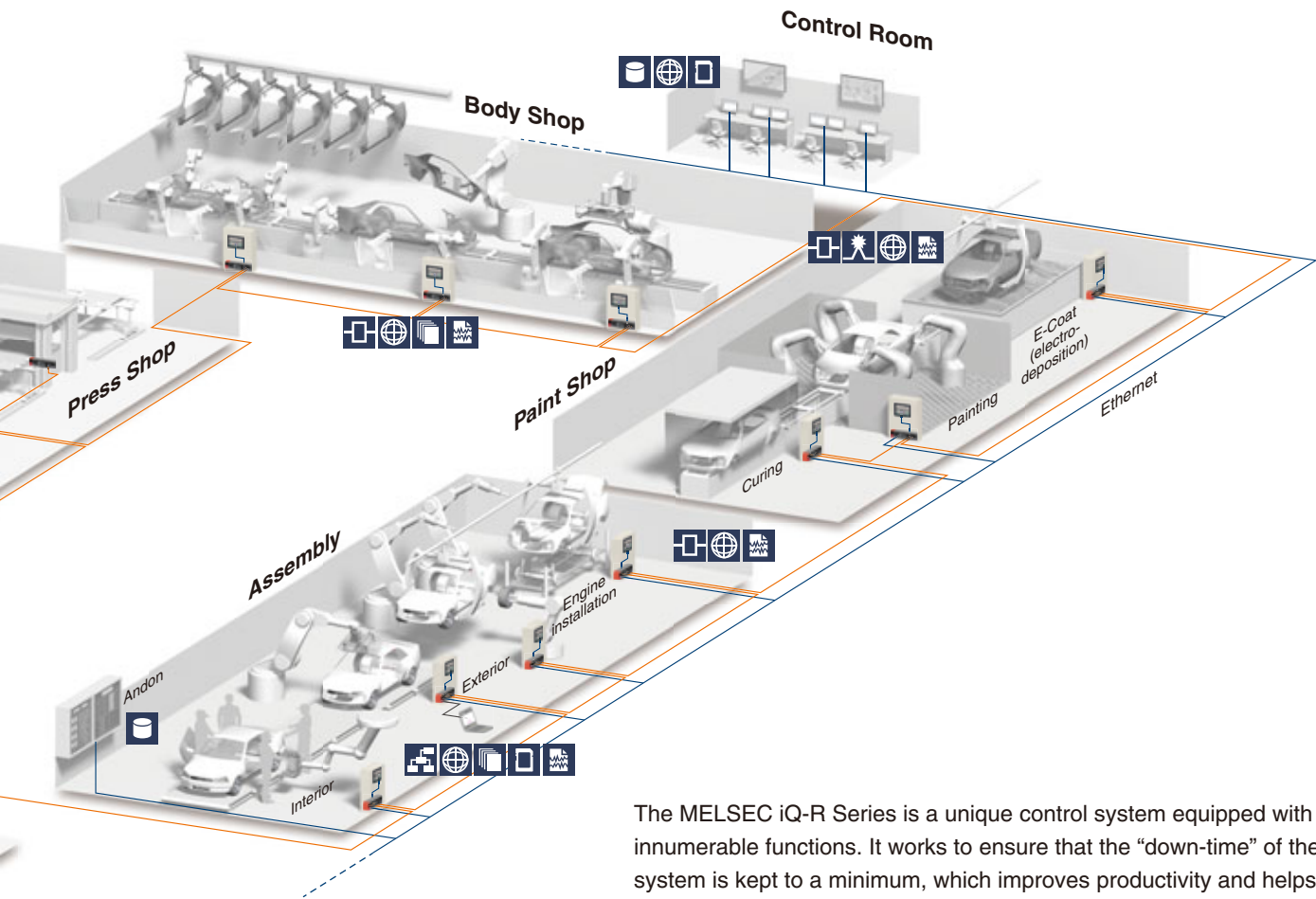
#### Memory dump enables confirmation of operation problems Coming soon

- Saves block of device/label data when error occurs
- Root cause analysis by confirming data on device monitor screen



Memory dump setup





The MELSEC iQ-R Series is a unique control system equipped with innumerable functions. It works to ensure that the “down-time” of the system is kept to a minimum, which improves productivity and helps to maintain the efficiency of the overall plant.

**Corrective maintenance CPU module**

### Efficient diagnostics with extensive event logging

- Logging of program change events, errors and when the power is turned off
- Event logging displayed in list form
- Quickly detect problems due to operating mistakes by multiple users

Event log list

**Corrective maintenance GX Works3**

### Multi-language software improves global support

- Comment/label names can be registered in multiple languages
- Easy to switch between languages
- No need for multiple programs to satisfy regional requirements

Switch between device comment languages

**Corrective maintenance GX Works3**

### Quickly find network errors

- Visualize error location from network system image
- Easy network error corrective measures

CC-Link IE Control Network

**Corrective maintenance GX Works3**

### Simple troubleshooting, even for novice users

- Start diagnostics screen on GX Works3 just by connecting via USB
- Display detailed error information and corrective procedures

Automatically start diagnostics



## Quality

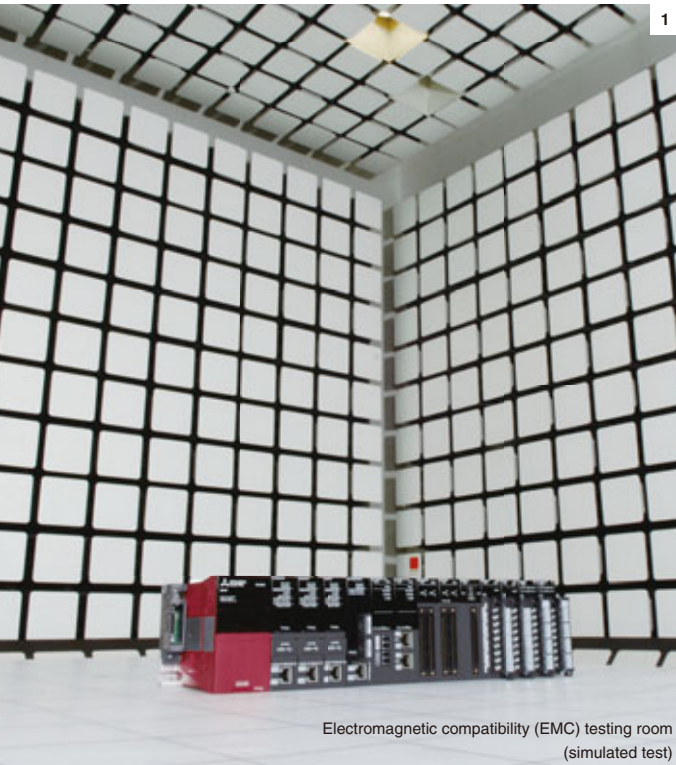
### Reliable and trusted MELSEC iQ-R product quality

The MELSEC iQ-R Series is based on two fundamental aspects of quality.

“Quality of product”

“Quality for application”

These two characteristics are part of the main principle behind the MELSEC iQ-R Series. This new control system includes various features designed-in to provide a solution that not only improves the overall manufacturing productivity, but also maintains a high level of industrial quality that is ideal for the harsh and rugged environments that it is subjected to on a daily basis.



Electromagnetic compatibility (EMC) testing room  
(simulated test)



### Robust design ideal for harsh industrial environments

Synonymous with the Mitsubishi Electric name, the MELSEC iQ-R Series is designed with high quality and reliability, which is a prerequisite for industrial applications. In addition, the overall aesthetics and usability enable easier maintenance that customers routinely expect.

#### Classification according to IEC60721-3-3 Class 3C2

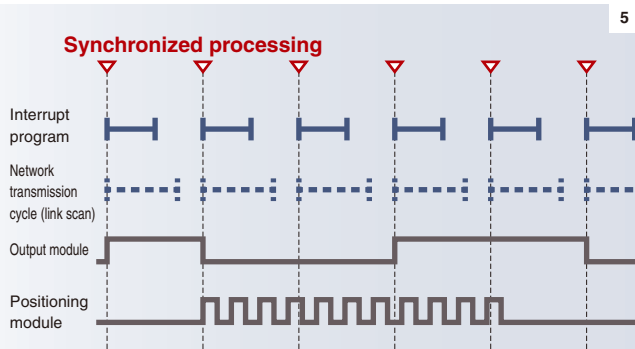
For protection against aggressive atmosphere and gases, products with a conformal coating (JIS C60721-3-3/IEC60721-3-3 Class 3C2) are available on request\*1

\*1: Please contact your local Mitsubishi Electric office or representative for further details.

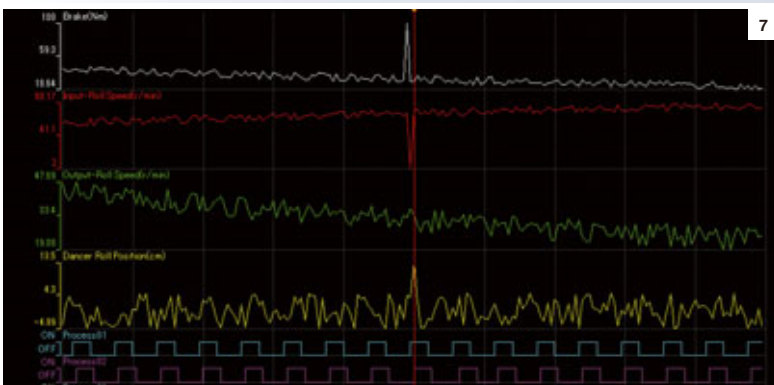
1. Conforms to stringent quality evaluations and tests that are based on robust industrial environments including EMC, LSI, temperature, vibration and HALT tests.
2. High manufacturing quality control through QR code based quality management system.
3. The front face has a wide and open design with an easy-to-use front cover.
4. The base rack design includes a dedicated earth rail to prevent noise interference in low power supply conditions and a robust structure that enables easy installation without extensive damage to bus connectors.

## Conforms to main international quality standards

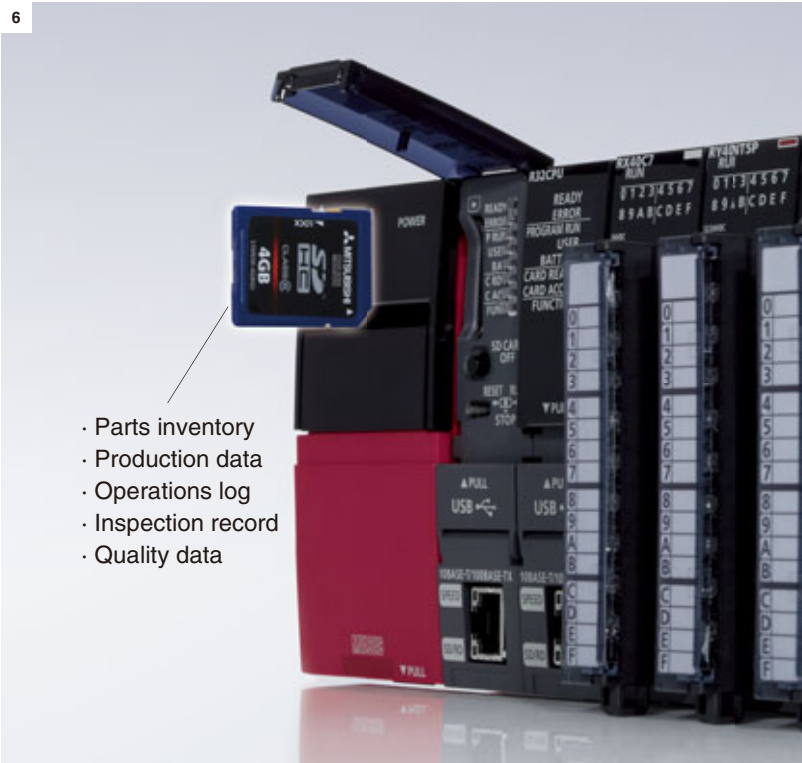
The MELSEC iQ-R Series conforms to most of the main international standards that realizes applications requiring multiple global locations.



5 6



7



- Parts inventory
- Production data
- Operations log
- Inspection record
- Quality data

## Improve and maintain actual manufacturing quality

### Maintains product quality during manufacturing

With inter-module synchronization, it is now possible to precisely synchronize interrupt programs with the network communications cycle (link scan).

Any variations in data transmission response time (network transmission delay time) between the controller and other devices on the network are eliminated, realizing high integrity between manufacturing processes that are dependent on each other, ensuring high performance and processing.

### Realizes traceability through data logging

Simple settings enable the collection of production data needed for traceability. Furthermore, collected data can be analyzed easily using a dedicated viewer. Analyzing various data on production processes provides an indicator for quality improvements and manufacturing cost reductions, thereby supporting optimization of the production system.

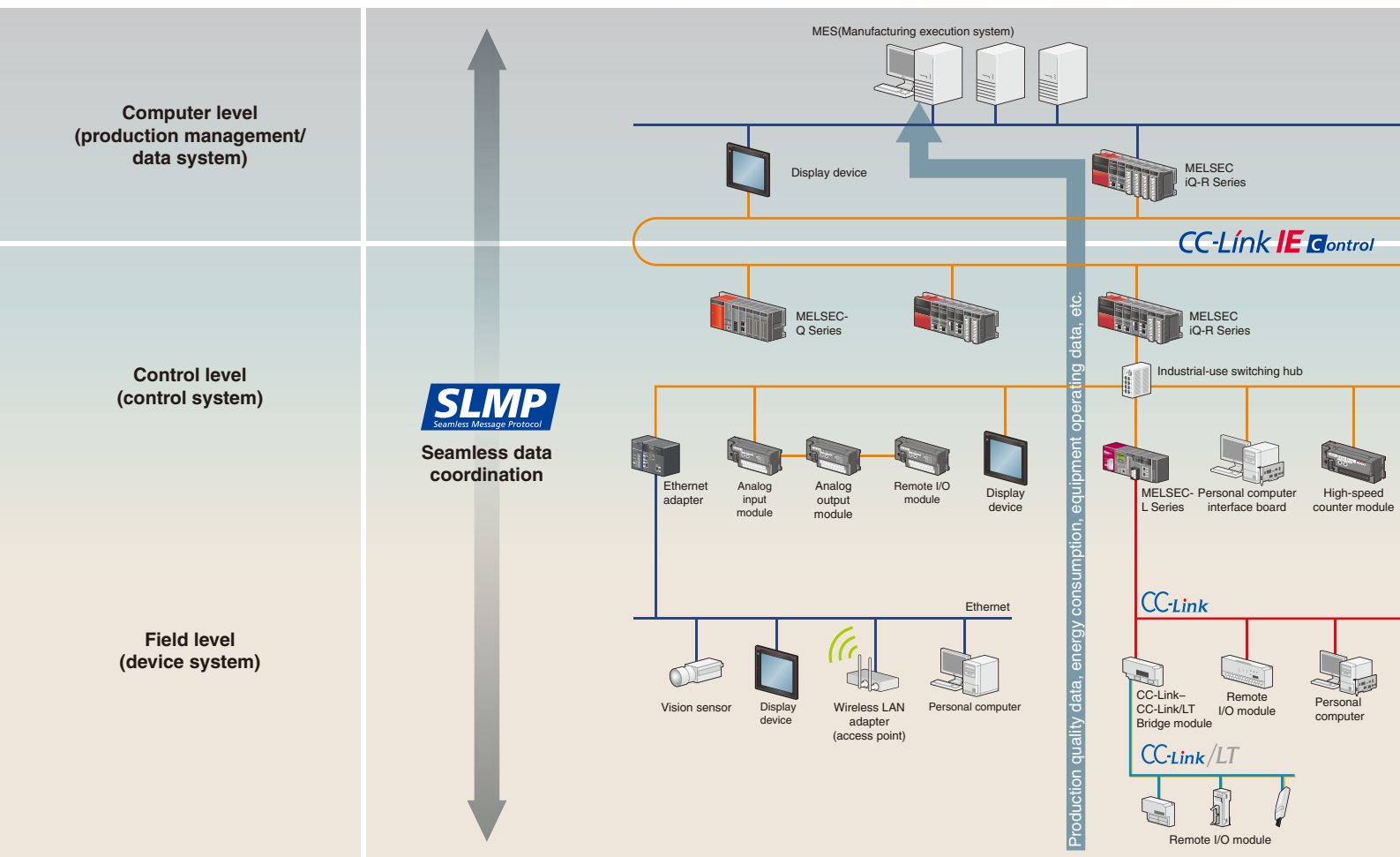
5. Graph showing the signal synchronization between several modules.
6. Data required for traceability is collected on the SD memory card.
7. Collected data is analyzed using a dedicated viewer.



# Connectivity

## Seamless network reduces system costs

The MELSEC iQ-R Series is part of a family of products all interconnected across various levels of automation. Based on the seamless message protocol (SLMP\*1), data flows transparently between the sensor level and the management level across multiple industry-standard automation networks. CC-Link IE, Asia's No. 1 industrial network, realizes fast gigabit data transmission speeds, further optimizing the manufacturing cycle. In addition, the SSCNET III/H high-speed motion control network further enhance the factory-wide connectivity solution. In parallel to this, production data is visible from the shop floor directly into MES database servers via the MES interface.



## Seamless connectivity within all levels of manufacturing

Utilizing SLMP\*1, it is possible to access production management systems, programmable controllers and other devices seamlessly using the same method without having to worry about network hierarchies or boundaries. Monitoring machines and collecting data can be performed easily from virtually anywhere on the network.

\*1: Seamless Message Protocol (SLMP): A simple client-server common protocol that enables communication between Ethernet products and CC-Link IE-compatible machines.

## High-speed and large bandwidth ideal for large-scale control systems

The Ethernet-based open network CC-Link IE is an industry-leading 1 Gbps high-speed, large-capacity network. The division of 1 Gbps broadband into uses for distributed control and field data communications secures the reliability of control communications and realizes real-time data collection, which can be difficult with standard Ethernet.

## Optimal network proposals for each level

### CC-Link IE Control

CC-Link IE Control is a high-reliability distributed control network designed to handle very large data communications (128K word) over a high-speed (1 Gbps) dual-loop optical cable topology.

### CC-Link IE Field

CC-Link IE Field is a versatile gigabit Ethernet-based network integrating controller, I/O control, safety control, and motion control in a flexible wiring topology supporting star, ring, and line configurations.

### CC-Link CC-Link Safety CC-Link/LT

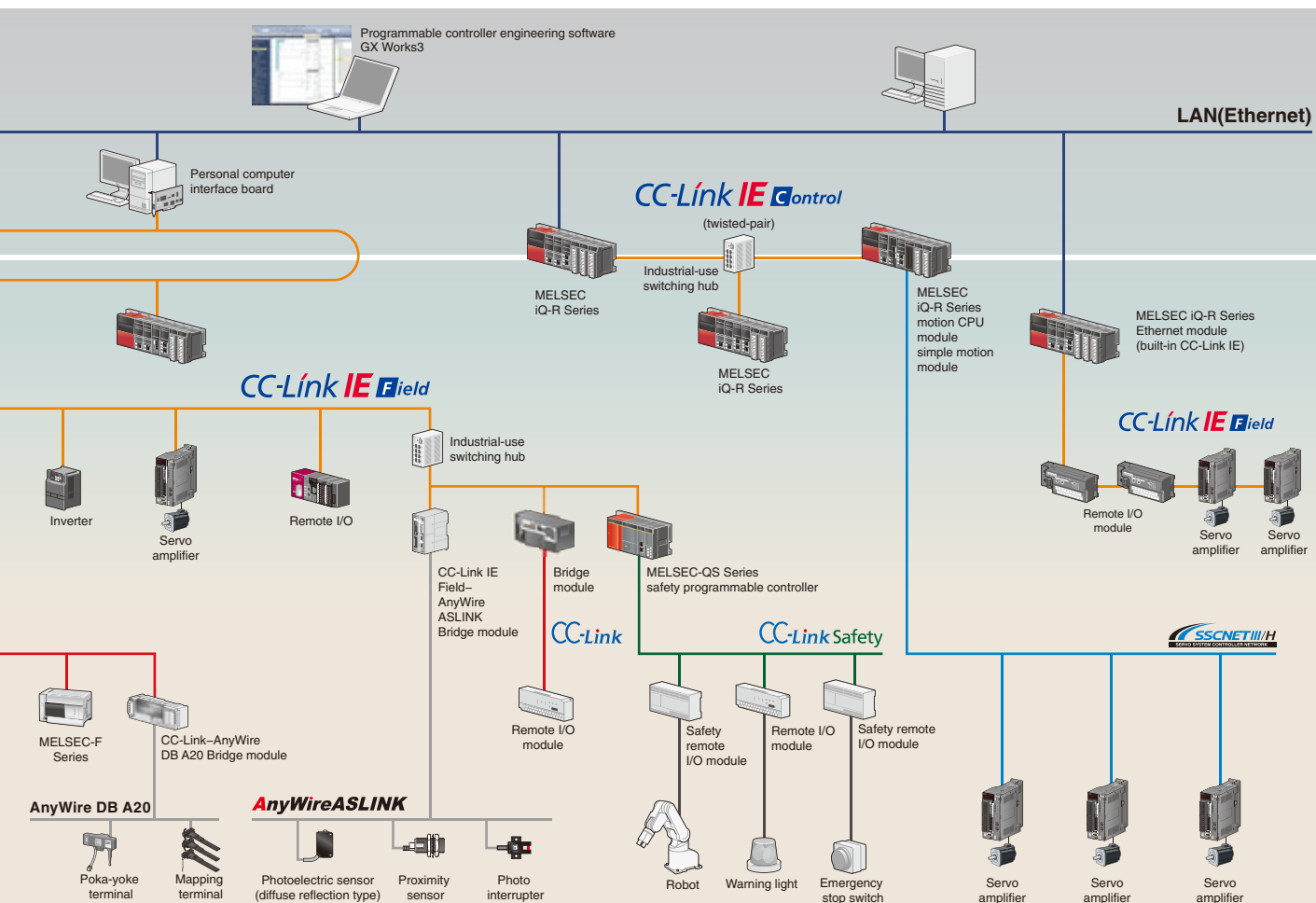
CC-Link is a high-speed and highly reliable deterministic I/O control network that realizes reduced wiring while offering multi-vendor compatible products. This open field network is a global standard, originating from Japan and Asia. In addition, CC-Link Safety, is a dedicated fail-safe network that is used as a safety risk management solution. CC-Link/LT is a sensor-level network that is ideal for compact and complicated wiring installations.

### AnyWire

AnyWire is a sensor level distributed control network that is designed to reduce installation costs by utilizing general-purpose wiring and robot cables.

### SSCNET III/H

SSCNET III/H is a dedicated high-speed, high-performance, highly reliable servo system control network that offers flexible long-distance wiring capabilities based on optical-fiber cable topology.



## Simple connection to external devices using MELSOFT library

Utilizing the GX Works3 Predefined Protocol support function, simply select the protocol to be used and the data to transmit/receive to communicate easily with external devices such as vision sensors and temperature controllers. Engineering time can be substantially reduced as it is no longer necessary to create separate communications programs.

## CC-Link IE Control (twisted-pair cable) Coming soon!

Utilizing a system architecture that has no constraints and enables one to choose freely such as star/line/ring topologies, adding and removing equipment is easier. Moreover, compatibility with standard twisted-pair cabling means that wiring costs can be reduced.

## Connect to two different types of networks with the same module

Ethernet and CC-Link IE network communications can be realized with the same network module. Since multiple network types can use one module, equipment costs can be further reduced.



# Security

## Robust security that can be relied on

As technology becomes more complex and the distribution of manufacturing systems more global, the protection of intellectual property is even more significant. When shipping a finished product overseas, the last thing an OEM needs to consider is unauthorized copying or changing of the original project data. In addition to this, unauthorized access to the control system can have very serious implications to the control system and the end user, which can compromise the overall safety of the plant. The MELSEC iQ-R Series has a number of embedded features that help to maintain these requirements, such as hardware and software keys to protect intellectual property, and multi-level user access password hierarchy to protect the project at the design stage.

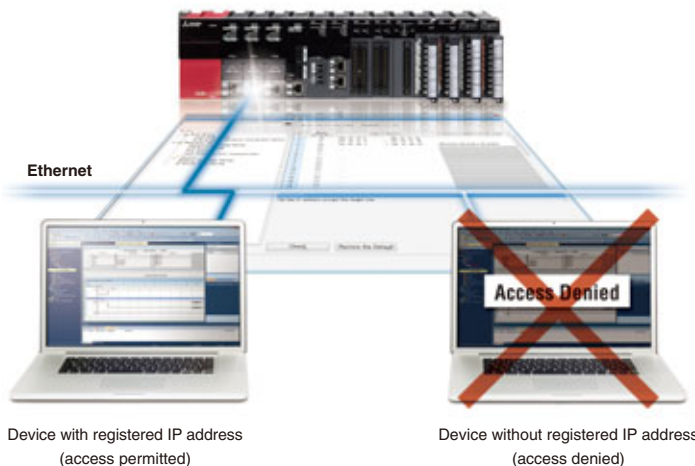
## Powerful security features protecting intellectual property

### Security key authentication protecting project data

The security key authentication prevents programs from being opened on personal computers where the security key has not been registered. Furthermore, because programs cannot be executed by CPU modules where the security key has not been registered, the integrity of customer technologies and other intellectual property is not compromised. The security key can also be registered on an extended SRAM cassette. Therefore, when replacing the CPU module, there is no need to re-register the security key, making replacement very simple.



## Prevent unauthorized access across the network



The IP filter can be used to register the IP addresses of devices permitted to access the CPU module. As a result, access from non-registered devices can be blocked, thereby lowering the risk of program hacking and unauthorized access by a third party.

Another feature is a remote password function for password-based security. Passwords of up to 32 characters can be set to prevent unauthorized access to the CPU module via networks such as Ethernet.



## Compatibility

### Extensive compatibility with existing products

Whenever introducing a new system or technology into an existing manufacturing plant or control system, utilization of existing assets as much as feasibly possible is a mandatory requirement with today's manufacturing needs. The MELSEC iQ-R Series addresses these subtle but substantial needs with various system hardware support and engineering project compatibility to achieve an easy path to higher technology and improved performance capabilities.



### Utilize existing MELSEC-Q Series assets

#### Current programs can be fully utilized

A simply conversion process\*1 is all it takes to enable the use of MELSEC-Q Series programs with the MELSEC iQ-R Series. Customers can effectively use the program assets they have accumulated, thereby reducing the overall engineering time.

\*1: For detailed information about converting to GX Works3 programs, please refer to the "GX Works3 Operating Manual".



#### Variety of compatible modules

By utilizing the dedicated extension base, most MELSEC-Q Series modules\*2 can be re-used. This makes it possible to introduce the high-performance MELSEC iQ-R Series while controlling the cost of supplementary equipment.

\*2: For further details, please refer to the "MELSEC iQ-R Module Configuration Manual".

#### Possible to divert external device wiring

The MELSEC iQ-R Series I/O module, analog module, and counter module pin layouts and connectors are the same as those of the MELSEC-Q Series. Accordingly, existing external device wiring (connectors, terminal blocks) can be diverted without changes and wiring costs can be reduced.



# iQ Platform for maximum return on investment

Minimize TCO, Seamless integration, Maximize productivity, Transparent communications: these are common items that highlight the benefits of the iQ Platform. Enhanced further with the arrival of the new iQ-R Series Programmable Automation Controller (PAC), reducing costs and improving productivity can be realized even easier.

The iQ Platform minimizes TCO at all phases of the automation life cycle by improving development times, enhancing productivity, reducing maintenance costs, and making information more easily accessible. Seamless integration is the core part of the iQ Platform, having a highly intelligent controller platform that caters to different aspects of control all on the same base rack, and maximizing productivity by taking advantage of the high-speed iQ-R system bus, which further reduces operation cycle times. Transparent communications are achieved by supporting the industry-leading gigabit Ethernet-based open network, CC-Link IE. Seamless data flow is realized no matter what point on the network, ensuring the free flow of production data across the manufacturing site.

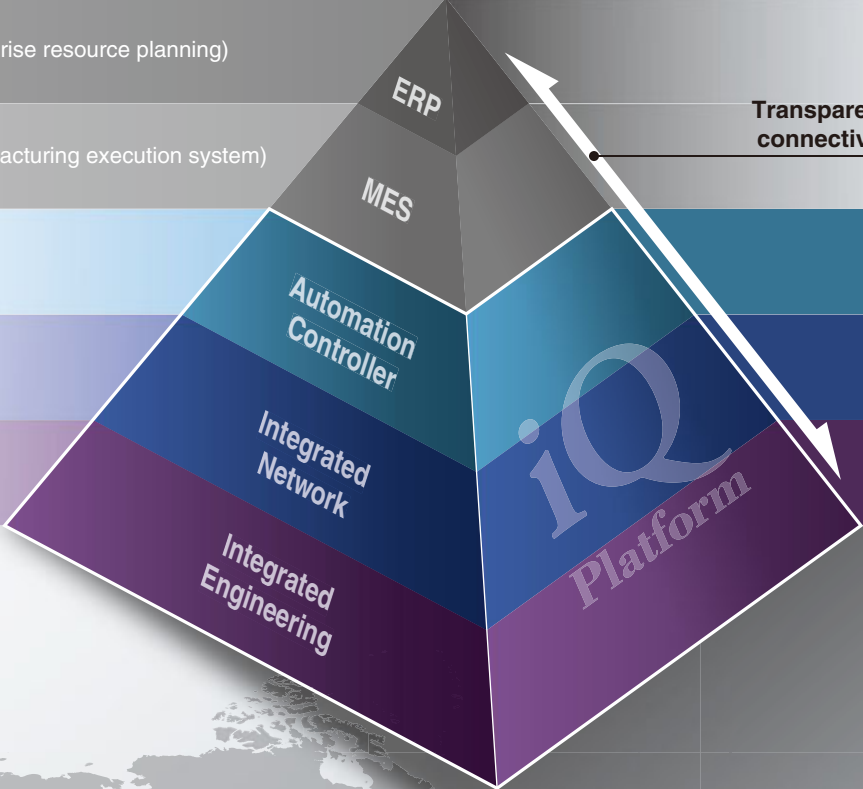
Taking these aspects and applying the new iQ-R Series controller into the mix, the iQ Platform raises processing capabilities to the next level for future intelligent manufacturing plants.



ERP (Enterprise resource planning)

MES (Manufacturing execution system)

Transparent connectivity







## PAC & HMI

- 1 The new high-speed MELSEC iQ-R Series system bus is 40-times faster realizing improved system performance
- 2 Program standardization through function blocks and module labels
- 3 Powerful and robust security features



## Network

- 1 CC-Link IE, 1Gbps high-speed and large bandwidth communications network (40-times faster link refresh)
- 2 Seamless connectivity within all levels of manufacturing with SLMP



## Engineering

- 1 Automatic generation of network configuration diagram
- 2 Share parameters across multiple engineering software via MELSOFT Navigator
- 3 Changes to system labels shared between PAC and HMI

Mitsubishi Electric  
FA Integrated Controller **iQ** Platform

# Lineup

## Power supply

R61P..... AC input  
R63P..... DC input

## Base

### Main base

R35B..... 5-slot  
R38B..... 8-slot  
R312B..... 12-slot

### Extension base

R65B..... 5-slot  
R68B..... 8-slot  
R612B..... 12-slot

### RQ extension base (Q Series type)

RQ65B..... 5-slot  
RQ68B..... 8-slot  
RQ612B..... 12-slot

### Extension cable

RC06B..... 0.6 m  
RC12B..... 1.2 m  
RC30B..... 3 m  
RC50B..... 5 m

## CPU

## P.21

### Programmable controller CPU

R04CPU..... 40K steps  
R08CPU..... 80K steps  
R16CPU..... 160K steps  
R32CPU..... 320K steps  
R120CPU..... 1200K steps

### Motion CPU

R16MTCPU..... 16-axis  
R32MTCPU..... 32-axis

### SD memory card

L1MEM-2GBSD..... 2 GB  
L1MEM-4GBSD..... 4 GB

### Extended SRAM cassette

NZ2MC-1MBS..... 1 MB  
NZ2MC-2MBS..... 2 MB  
NZ2MC-4MBS..... 4 MB  
NZ2MC-8MBS..... 8 MB

## I/O

### AC input

RX10..... 16-point

### DC input

RX40C7..... 16-point  
RX41C4..... 32-point  
RX42C4..... 64-point

### Relay output

RY10R2..... 16-point

### Transistor (sink) output

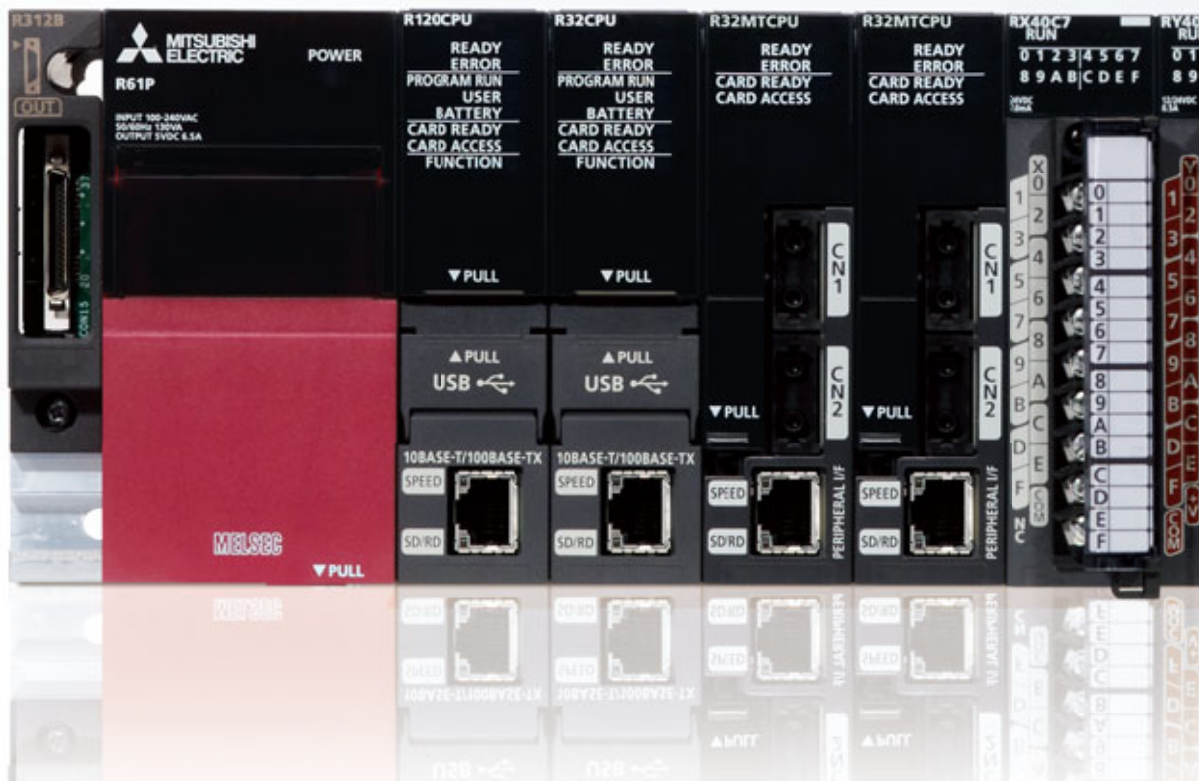
RY40NT5P..... 16-point  
RY41NT2P..... 32-point  
RY42NT2P..... 64-point

### Transistor (source) output

RY40PT5P..... 16-point  
RY41PT1P..... 32-point  
RY42PT1P..... 64-point

### I/O combined module

DC Input, transistor (sink) output  
RH42C4NT2P..... 32-point/32-point





**Analog**

Analog input

- R60AD4 ..... 4-channel  
(voltage or current)
- R60ADV8 ..... 8-channel (voltage)
- R60ADI8 ..... 8-channel (current)

Analog output

- R60DA4 ..... 4-channel  
(voltage or current)
- R60DAV8 ..... 8-channel (voltage)
- R60DAI8 ..... 8-channel (current)

**Motion, Positioning,  
High-speed counter**

Simple motion

- RD77MS2 ..... 2-axis
- RD77MS4 ..... 4-axis
- RD77MS8 ..... 8-axis
- RD77MS16 ..... 16-axis

Positioning

Transistor output

- RD75P2 ..... 2-axis
- RD75P4 ..... 4-axis

Differential driver output

- RD75D2 ..... 2-axis
- RD75D4 ..... 4-axis

High-speed counter

DC input/Transistor (sink) output

- RD62P2 ..... 2-channel

DC input/Transistor (source) output

- RD62P2E ..... 2-channel

Differential input/Transistor (sink) output

- RD62D2 ..... 2-channel

**Network**

Ethernet

- RJ71EN71 ..... 1 G/100 M/10 Mbps  
Multiple network type  
(Ethernet/CC-Link IE)

CC-Link IE Control network

- RJ71GP21-SX ..... Control/Normal  
station, optical cable

CC-Link IE Field network

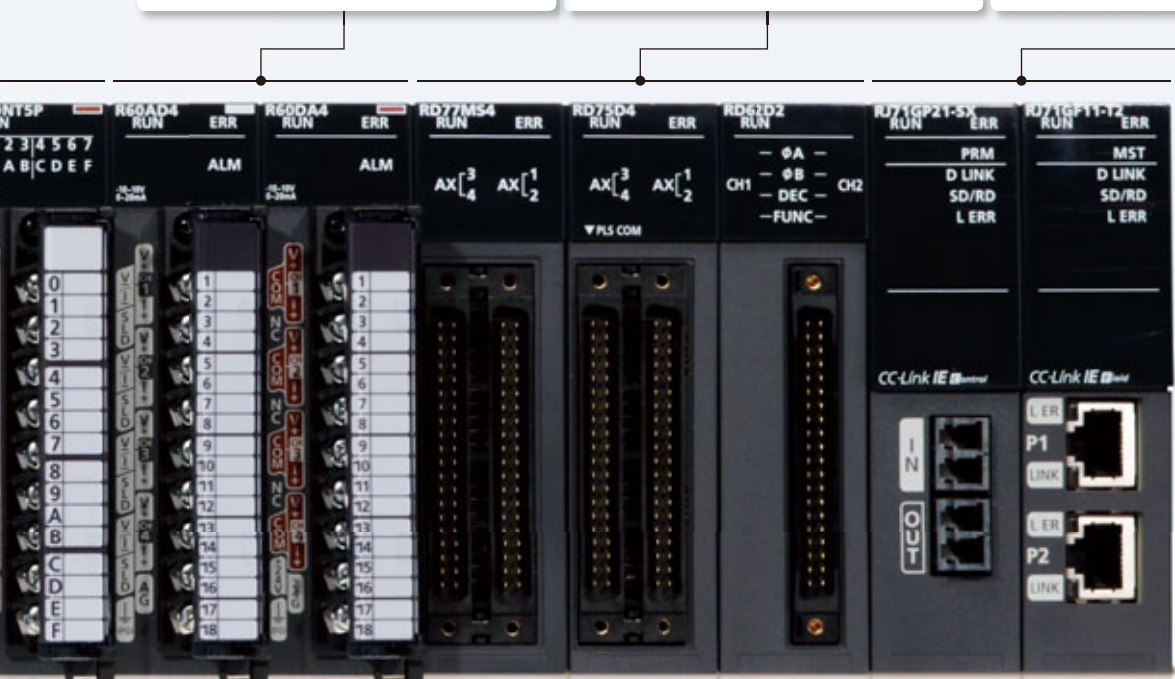
- RJ71GF11-T2 ..... Master/Local  
station

CC-Link

- RJ61BT11 ..... Master/Local station  
CC-Link Ver.2

Serial communication

- RJ71C24 ..... RS-232, RS-422/485
- RJ71C24-R2 ..... RS-232 x2ch
- RJ71C24-R4 ..... RS-422/485 x2ch



Country/Region	Sales office	Tel/Fax
USA	Mitsubishi Electric Automation, Inc. 500 Corporate Woods Parkway, Vernon Hills, IL 60061, USA	Tel : +1-847-478-2100 Fax : +1-847-478-2253
Mexico	Mitsubishi Electric Automation, Inc. Mexico Branch Mariano Escobedo #69, Col. Zona Industrial, Tlalnepantla Edo, C.P.54030, Mexico	Tel : +52-55-3067-7500
Brazil	Mitsubishi Electric do Brasil Comércio e Serviços Ltda. Rua Jussara, 1750- Bloco B Anexo, Jardim Santa Cecilia, CEP 06465-070, Barueri, San Paulo, Brazil	Tel : +55-11-4689-3000 Fax : +55-11-4689-3016
Germany	Mitsubishi Electric Europe B.V. German Branch Gothaer Strasse 8, D-40880 Ratingen, Germany	Tel : +49-2102-486-0 Fax : +49-2102-486-1120
UK	Mitsubishi Electric Europe B.V. UK Branch Travellers Lane, Hatfield, Hertfordshire, AL10 8XB, U.K.	Tel : +44-1707-28-8780 Fax : +44-1707-27-8695
Ireland	Mitsubishi Electric Europe B.V. Irish Branch Westgate Business Park, Ballymount, IRL-Dublin 24, Ireland	Tel : +353-1-4198800 Fax : +353-1-4198890
Italy	Mitsubishi Electric Europe B.V. Italian Branch Centro Direzionale Colleoni - Palazzo Sirio Viale Colleoni 7, 20864 Agrate Brianza(Milano) Italy	Tel : +39-039-60531 Fax : +39-039-6053-312
Spain	Mitsubishi Electric Europe B.V. Spanish Branch Carretera de Rubí, 76-80-Apdo. 420, 08173 Sant Cugat del Vallés (Barcelona), Spain	Tel : +34-93-565-3131 Fax : +34-93-589-1579
France	Mitsubishi Electric Europe B.V. French Branch 25, Boulevard des Bouvets, F-92741 Nanterre Cedex, France	Tel : +33-1-5568-5568 Fax : +33-1-5568-5757
Czech Republic	Mitsubishi Electric Europe B.V. Czech Branch Avenir Business Park, Radlicka 751/113e, 158 00 Praha5, Czech Republic	Tel : +420-251-551-470 Fax : +420-251-551-471
Poland	Mitsubishi Electric Europe B.V. Polish Branch ul. Krakowska 50, 32-083 Balice, Poland	Tel : +48-12-630-47-00 Fax : +48-12-630-47-01
Sweden	Mitsubishi Electric Europe B.V. (Scandinavia) Fjellievägen 8, SE-22736 Lund, Sweden	Tel : +46-8-625-10-00 Fax : +46-46-39-70-18
Russia	Mitsubishi Electric Europe B.V. Russian Branch St. Petersburg Office Piskarevsky pr. 2, bld 2, lit "Sch", BC "Benua", office 720; 195027, St. Petersburg, Russia	Tel : +7-812-633-3497 Fax : +7-812-633-3499
Turkey	Mitsubishi Electric Turkey A.Ş Ümraniye Branch Serifali Mahallesi Nutuk Sokak No:5, TR-34775 Umraniye, Istanbul, Turkey	Tel : +90-216-526-3990 Fax : +90 -216-526-3995
Dubai	Mitsubishi Electric Europe B.V. Dubai Branch Dubai Silicon Oasis, P.O.BOX 341241, Dubai, U.A.E.	Tel : +971-4-3724716 Fax : +971-4-3724721
South Africa	Adroit Technologies 20 Waterford Office Park 189 Witkoppen Road Fourways Johannesburg South Africa	Tel : +27-11 658-8100 Fax : +27-11 658-8101
China	Mitsubishi Electric Automation (China) Ltd. No.1386 Hongqiao Road, Mitsubishi Electric Automation Center, Shanghai, China	Tel : +86-21-2322-3030 Fax : +86-21-2322-3000
Taiwan	Setsuyo Enterprise Co., Ltd. 6F., No.105, Wugong 3rd Road, Wugu District, New Taipei City 24889, Taiwan, R.O.C.	Tel : +886-2-2299-2499 Fax : +886-2-2299-2509
Korea	Mitsubishi Electric Automation Korea Co., Ltd. 1480-6, Gayang-Dong, Gangseo-Gu, Seoul, 157-200, Korea	Tel : +82-2-3660-9530 Fax : +82-2-3664-8372
Singapore	Mitsubishi Electric Asia Pte. Ltd. 307, Alexandra Road, Mitsubishi Electric Building, Singapore, 159943	Tel : +65-6470-2308 Fax : +65-6476-7439
Thailand	Mitsubishi Electric Factory Automation (Thailand) Co., Ltd. 12th Floor, SV.City Building, Office Tower 1, No. 896/19 and 20 Rama 3 Road, Kwaeng Bangpongpan, Khet Yannawa, Bangkok 10120, Thailand	Tel : +66-2682-6522 Fax : +66-2682-6020
Vietnam	Mitsubishi Electric Vietnam Company Limited Hanoi Branch Suite 9-05, 9th Floor, Hanoi Central Office Building 44B Ly Thuong Kiet District, Hanoi City, Vietnam	Tel : +84-4-3937-8075 Fax : +84-4-3937-8076
Indonesia	PT. Mitsubishi Electric Indonesia Gedung Jaya 11th Floor, JL. MH. Thamrin No.12, Jakarta Pusat 10340, Indonesia	Tel : +62-21-3192-6461 Fax : +62-21-3192-3942
India	Mitsubishi Electric India Pvt. Ltd. Emerald House, EL-3, J Block, M.I.D.C., Bhosari, Pune, 411026, Maharashtra State, India	Tel : +91-20-2710-2000 Fax : +91-20-2710-2100
Australia	Mitsubishi Electric Australia Pty. Ltd. 348 Victoria Road, P.O. Box 11, Rydalmere, N.S.W 2116, Australia	Tel : +61-2-9684-7777 Fax : +61-2-9684-7245

## MITSUBISHI ELECTRIC CORPORATION

HEAD OFFICE: TOKYO BUILDING, 2-7-3, MARUNOUCHI, CHIYODA-KU, TOKYO 100-8310, JAPAN  
NAGOYA WORKS: 1-14, YADA-MINAMI 5, HIGASHI-KU, NAGOYA, JAPAN

Mitsubishi Electric Corporation Nagoya Works is a factory certified for ISO14001 (standards for environmental management systems) and ISO9001(standards for quality assurance management systems)

