

U.I. Lapp GmbH	PRODUCT INFORMATION	
SKINTOP® CUBE		29.11.2013

Variable range of clamping force
Vibration-safe module fixation
Strain relief
Oil resistance
Simplified servicing due to easy assembling and disassembling



Wide clamping range



Assembly time



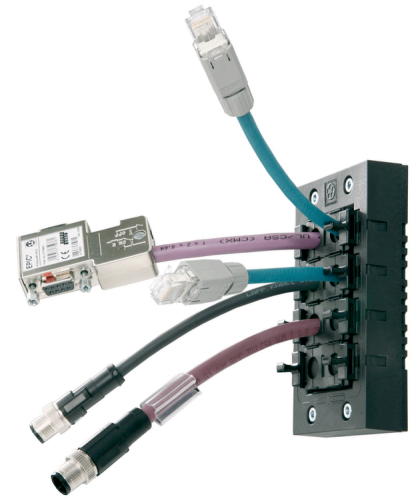
Optimum strain relief



Space requirement



Connector with standard housing unit



Info

Innovative multi-cable bushing system with variable clamping ranges for high flexibility in assembling.
When disassembling, the frame can remain on the housing and the plug-in module remains securely on the cable.

Application range

For installation of harnessed cables
Used in areas where cables and wires need to be safely inserted into housings
Apparatus and switch cabinet construction
Electronic installations
Automation technology

Design

The SKINTOP® CUBE system consists of the SKINTOP® CUBE FRAME and the clip modules SKINTOP® CUBE MODULE.
For cut-outs for industrial connectors with standard defined boreholes.
For cut-outs for 16-pin industrial connectors (36 x 86 mm)
For cut-outs for 24-pin industrial connectors (36 x 112 mm)

Note

SKINTOP® CUBE MODULE 20x20 BLIND can be used as a blind module and for clamping ranges 1 - 3 mm

Included

SKINTOP® CUBE FRAME including mounting material

Remark

Photographs are not to scale and do not represent detailed images of the respective products.

Product Management	Document: LAPP_PRO101967EN.pdf	1 / 4
--------------------	--------------------------------	-------

U.I. Lapp GmbH	PRODUCT INFORMATION	 LAPP GROUP
	SKINTOP® CUBE	29.11.2013

Technical Data

Approvals:	UL pending
Material:	Frame: glass fibre-reinforced polyamide Frame seal: CR Clip module: special polypropylene Clip module seal: LSE 2
Protection rating:	IP 64 NEMA 12
Temperature range:	-20°C to +80°C

Product Management	Document: LAPP_PRO101967EN.pdf	2 / 4
--------------------	--------------------------------	-------

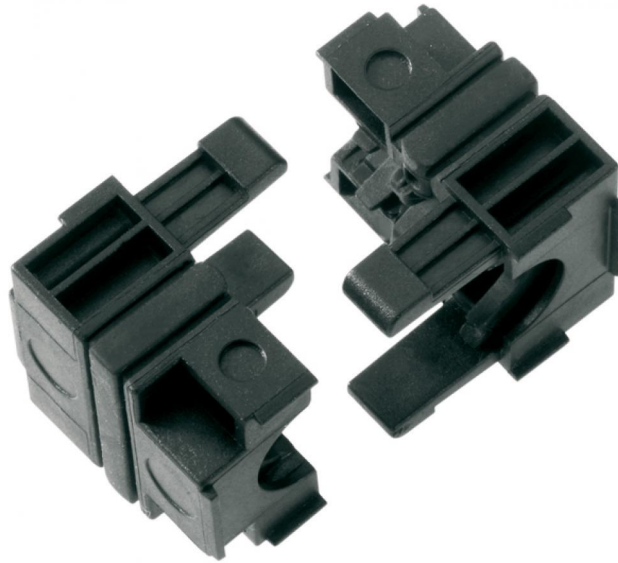
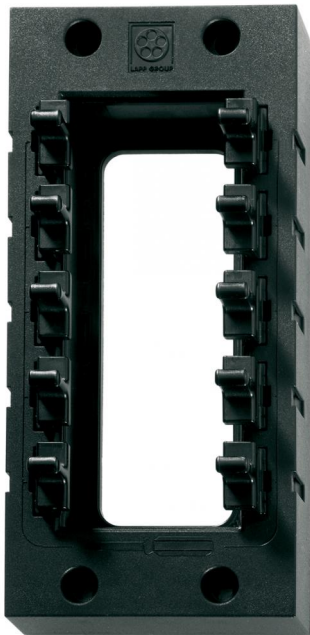


SKINTOP® CUBE

29.11.2013

Part number	Article designation / size	Clamping range ØF (mm)	Max. number of executions
SKINTOP® CUBE Frame			
52220000	SKINTOP® CUBE FRAME 16		8
52220001	SKINTOP® CUBE FRAME 24		10
SKINTOP® CUBE clip modules			
52220004	SKINTOP® CUBE MODULE 20x20 BLIND	1 - 3	
52220002	SKINTOP® CUBE MODULE 20x20 SMALL	4 - 6	
52220003	SKINTOP® CUBE MODULE 20x20 LARGE	6 - 9	
52220040	SKINTOP® CUBE MODULE 20x20 AS-I BUS		
52220005	SKINTOP® CUBE MODULE 40x40 SMALL	9 - 12	
52220006	SKINTOP® CUBE MODULE 40x40 LARGE	12 - 16	
52220007	SKINTOP® CUBE MODULE 40x40 BLIND		

U.I. Lapp GmbH	PRODUCT INFORMATION	 LAPP GROUP
	SKINTOP® CUBE	29.11.2013



Product Management	Document: LAPP_PRO101967EN.pdf	4 / 4
--------------------	--------------------------------	-------