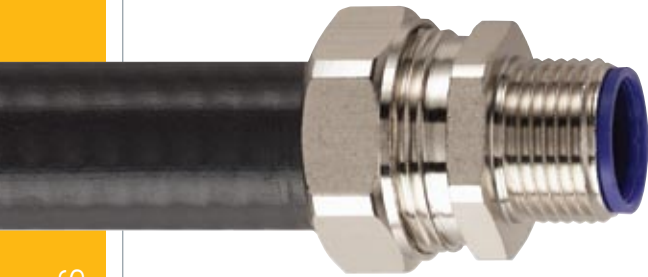


LTP, LTPHC, LTPUL & LTPE

galvanised steel, plastic coated
liquid tight



CONDUIT

LTP

Construction: Galvanised steel, helically wound, flexible conduit with smooth oil resistant and high temperature pvc cover. Colour black. Grey or orange on request.*

Typical Applications: Machine tools or outdoor installations where liquid tight is a requirement.

LTPUL

Construction: Galvanised steel, helically wound, flexible steel conduit including copper bonding strip (up to 32mm) with smooth pvc cover. Colour black.

Typical Applications: As for LTP but where UL listing or CSA approval is required.

LTPHC

Construction: Galvanised steel, helically wound, flexible conduit with smooth thermoplastic rubber cover. Colour black.

Typical Applications: Machine tools or outdoor installations where low or high temperature rating is required. ie. food processing

LTPE

Construction: Galvanised steel, helically wound, flexible conduit with smooth pvc cover. Colour black.

Typical Applications: Machine tools or outdoor installations where liquid tight is a requirement.



FITTINGS

IP66 IP67 IP68 IP69K

C

external thread nickel plated brass

Multipart compression fitting including nylon seal. Can be used for knockout or threaded entries as fitting rotates until tightened.



nominal size (mm)	US trade size (")	outside dia (mm)	inside dia (mm)	LTP part number	reel length (m)	min inside bend radius (mm)	LTPHC part number	reel length (m)	min inside bend radius (mm)	LTPUL part number	reel length (m)	min inside bend radius (mm)	LTPE part number	reel length (m)	min inside bend radius (mm)
10	¼	11.8	7.0	LTP10B ⁺	50	35									
12	⅜	14.2	10.0	LTP12B	25, 50	40	LTPHC12B	25	40						
16	½	17.8	12.6	LTP16B	10, 25, 50	45	LTPHC16B	25	45	LTPUL16B	25	50	LTPE16B	25	45
20	¾	21.1	16.0	LTP20B	10, 25, 50	65	LTPHC20B	25	65	LTPUL20B	25	90	LTPE20B	25	65
25	1	26.4	21.0	LTP25B	10, 25, 50	100	LTPHC25B	25	100	LTPUL25B	25	110	LTPE25B	25	100
32	1 ¼	33.1	26.5	LTP32B	10, 25	135	LTPHC32B	25	135	LTPUL32B	15	140	LTPE32B	10, 25	135
40	1 ½	41.8	35.4	LTP40B	10, 25	175	LTPHC40B	10	175	LTPUL40B	15	180	LTPE40B*	10, 25	175
50	2	47.9	40.4	LTP50B ⁺	10, 25	230	LTPHC50B ⁺	10	230	LTPUL50B ⁺	15	230	LTPE50B*	10, 25	230
63	2 ½	59.7	51.6	LTP63B ⁺	10, 25	280	LTPHC63B ⁺	10	280	LTPUL63B ⁺	15	280	LTPE63B*	10, 25	280

metric thread part number	PG thread part number	NPT thread part number
LTP10-M12-C		
LTP10-M16-C		
LTP12-M16-C	LTP12-PG9-C	
LTP16-M16-C	LTP16-PG11-C	
LTP16-M20-C	LTP16-PG13-C	LTP16-050-C
LTP20-M20-C	LTP20-PG16-C	LTP20-050-C
LTP25-M25-C	LTP25-PG21-C	LTP25-075-C
LTP32-M32-C	LTP32-PG29-C	LTP32-100-C
LTP40-M40-C	LTP40-PG36-C	LTP40-125-C
LTP50-M50-C	LTP50-PG42-C	
LTP63-M63-C	LTP63-PG48-C	

Note: Stainless steel fittings also available see page 29

ORDERING NOTES

- Add reel length eg: LTP20B-25M for a 25m reel
- For LTP specify colour (B = Black, G = Grey)
- * Indicates parts made to order on request and may be subject to MOQ and lead time
- + Double interlock section
- **Available on request:**
 - longer lengths and bulk packaging
 - cut lengths and assemblies
 - C-S with PG threads
 - other colours
 - internal thread fittings

How to read the fittings code

