

FAN12

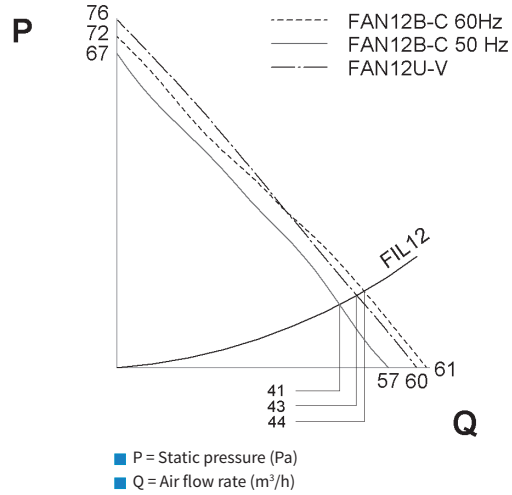
Ventilation units with filter

AIR FLOW RATE

57/61 - 60 m³/h

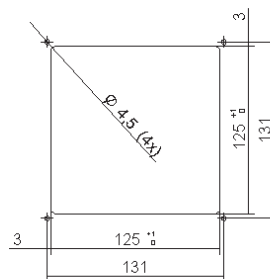
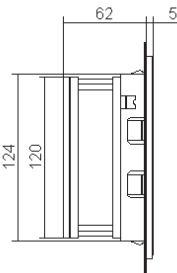
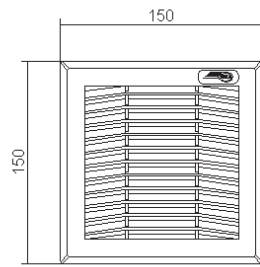


Performance

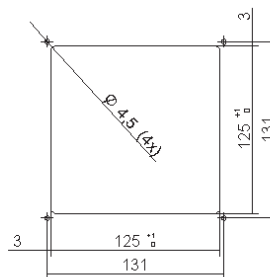
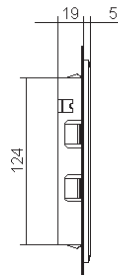
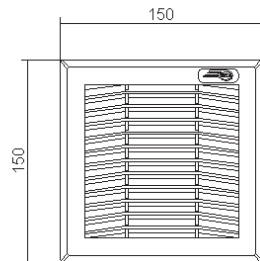


FAN12

Dimensions



FIL12



Drilling templates

N.B.: The drilling templates are only approximate.
For any requirements, contact our technical/sales office.

Features	UoM	FIL12XN0B	FAN12BN0B	FAN12CN0B	FAN12UN0B	FAN12VN0B
Air flow rate	m ³ /h	-	57 - 61	57 - 61	60	60
Power supply	V ~ Hz	-	230 1~ 50-60	115 1~ 50-60	24 V DC	48 V DC
Dimensions HxWxD	mm	150x150x24	150x150x67	150x150x67	150x150x67	150x150x67
Power draw	W	-	21 - 18	21 - 18	7	9
Max current	A	-	0.13 - 0.11	0.28 - 0.22	0.26	0.18
Overcurrent protection	-	-	Internal motor	Internal motor	Internal motor	Internal motor
Electrical connection	-	-	Faston	Faston	Faston	Faston
Operating cycle	-	-	100%	100%	100%	100%
Temperature limits	°C	-30+75	-10+50	-10+50	-10+50	-10+55
IP rating EN60529	-	IP54	IP54	IP54	IP54	IP54
Noise level	dB (A)	-	43 - 48	43 - 48	43	43
FAN + FIL air flow rate	m ³ /h	-	1x FIL12XN0B: 41 - 44 1x FIL25XN0B: 47 - 51		1x FIL12XN0B: 43 1x FIL25XN0B: 49	
Air flow direction	-	-	Ext to int. Reversible	Ext to int. Reversible	Ext to int. Reversible	Ext to int. Reversible
Filter (Eurovent)	-	EU4	EU4	EU4	EU4	EU4
Motor support	-	-	Bearings	Bearings	Bearings	Bearings
Lifetime L ₁₀	h	-	45000	45000	60000	60000
Colour	-	RAL 7035 embossed effect				
Conformity	-	CE	CE	CE	CE	CE

Accessories	
Pack of 10 fabric filters for FAN12	AAFFN12
Pack of 10 high-efficiency fabric filters for FAN12	AAFFH12
Pack of 10 fabric filters for FAN23-25	AAFFN25
Pack of 10 high-efficiency fabric filters for FAN23-25	AAFFH25
0-60°C thermostat, normally open 10A	AAFTO12
5-60°C thermostat, change-over contact 10A	AAWTS10
Bellows kit for IP55 ingress protection	C12Z01045