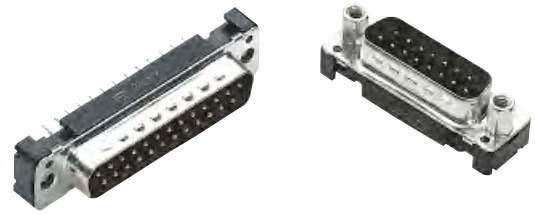


Number of contacts

9-50

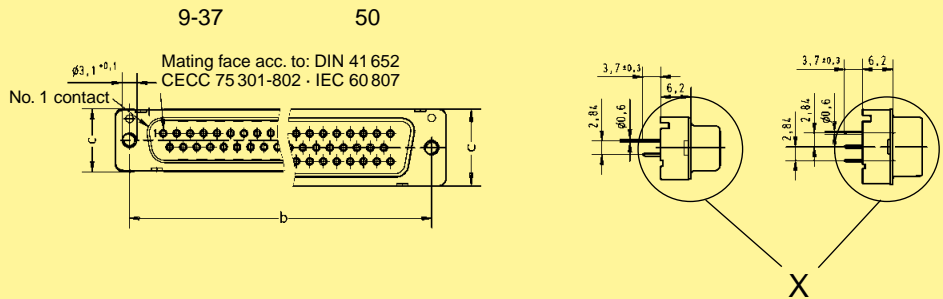


Turned solder pins, straight without grounding-pins

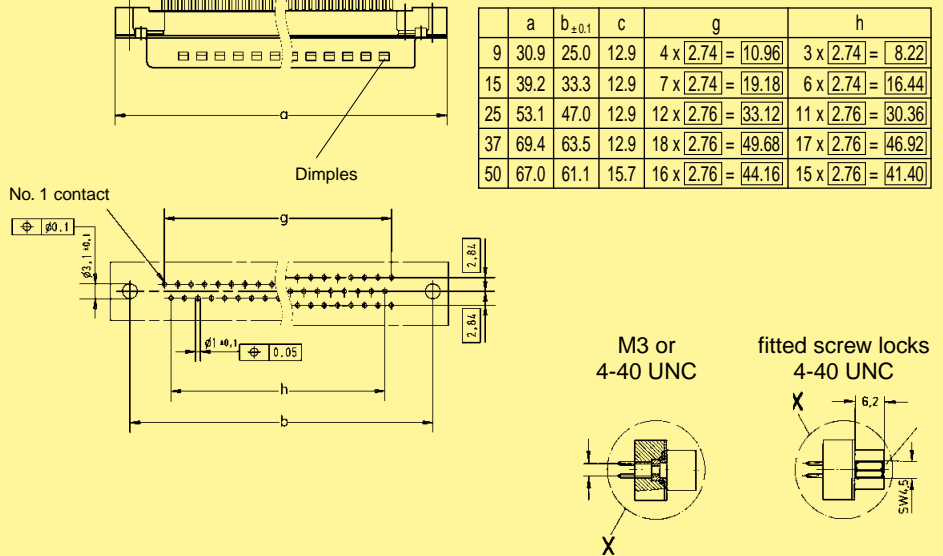
Identification	No. of contacts	Part No.	
Performance levels Explanations see page 05.04 Other performance levels on request		Performance level 3	Performance level 2
Male connector metal shell with dimples			
<div style="background-color: red; color: white; padding: 5px; transform: rotate(-15deg); display: inline-block;"> available on request </div>	9	09 66 121 770 .	09 66 121 670 .
	15	09 66 221 770 .	09 66 221 670 .
	25	09 66 321 770 .	09 66 321 670 .
	37	09 66 421 770 .	09 66 421 670 .
	50	09 66 521 770 .	09 66 521 670 .
Please insert digit for flange thread or fitted female screw locks			
	M3 ▶ 1 4-40 UNC ▶ 2 fitted screw locks 4-40 UNC ▶ 3		

D-Sub

Male connector



Board drillings



Dimensions in mm

Mating conditions see page 05.04