

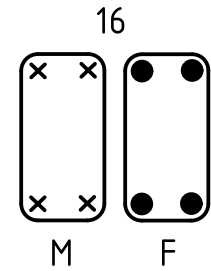
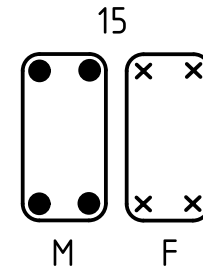
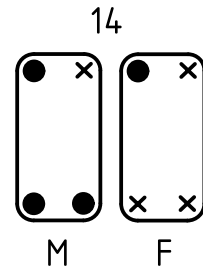
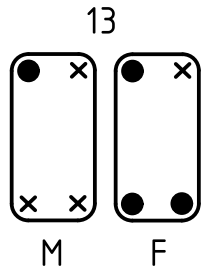
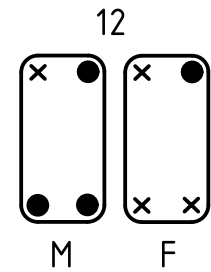
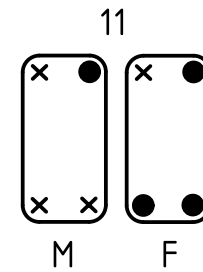
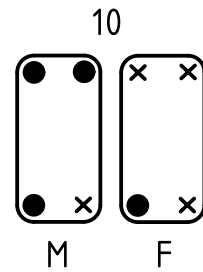
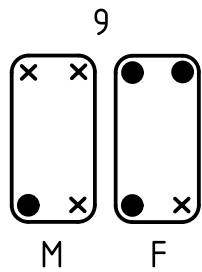
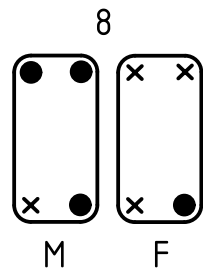
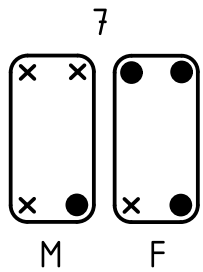
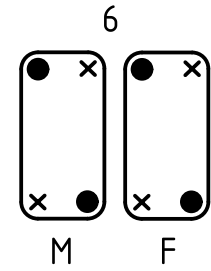
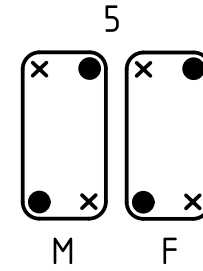
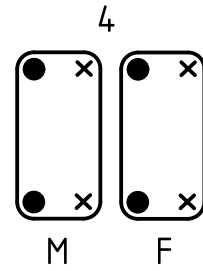
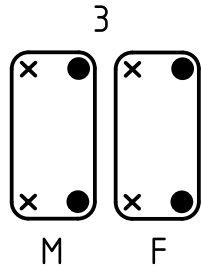
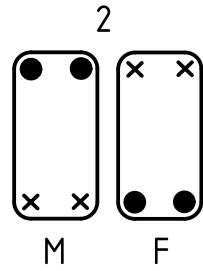
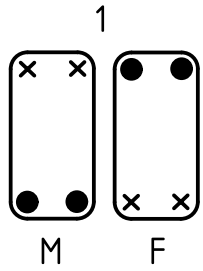
arrangement of pins and bushes see page 2 and 3

	All Dimensions in mm Original Size DIN A4		Scale 2:1	Free size tol.		Ref.	
			Created by FINKEV	Inspected by MOOR	Standardisation TIEMANNA	Sub.	
All rights reserved Department EL PD - DE		Date 2014-06-05		State Final Release			
HARTING Electric GmbH & Co. KG D-32339 Espelkamp		Title Han-Modular Fuehrungstifte				Doc-Key / ECM-Nr. 100175794/UGD/003/A 500000075753	
Type TB		Number 09 14 000 990X				Rev. A	Page 1/3

09 14 000 9909	guide bush
09 14 000 9908	guide pin
part number	description

coding system with guide pins and bushes

for hoods/housings with one frame or hinged frame

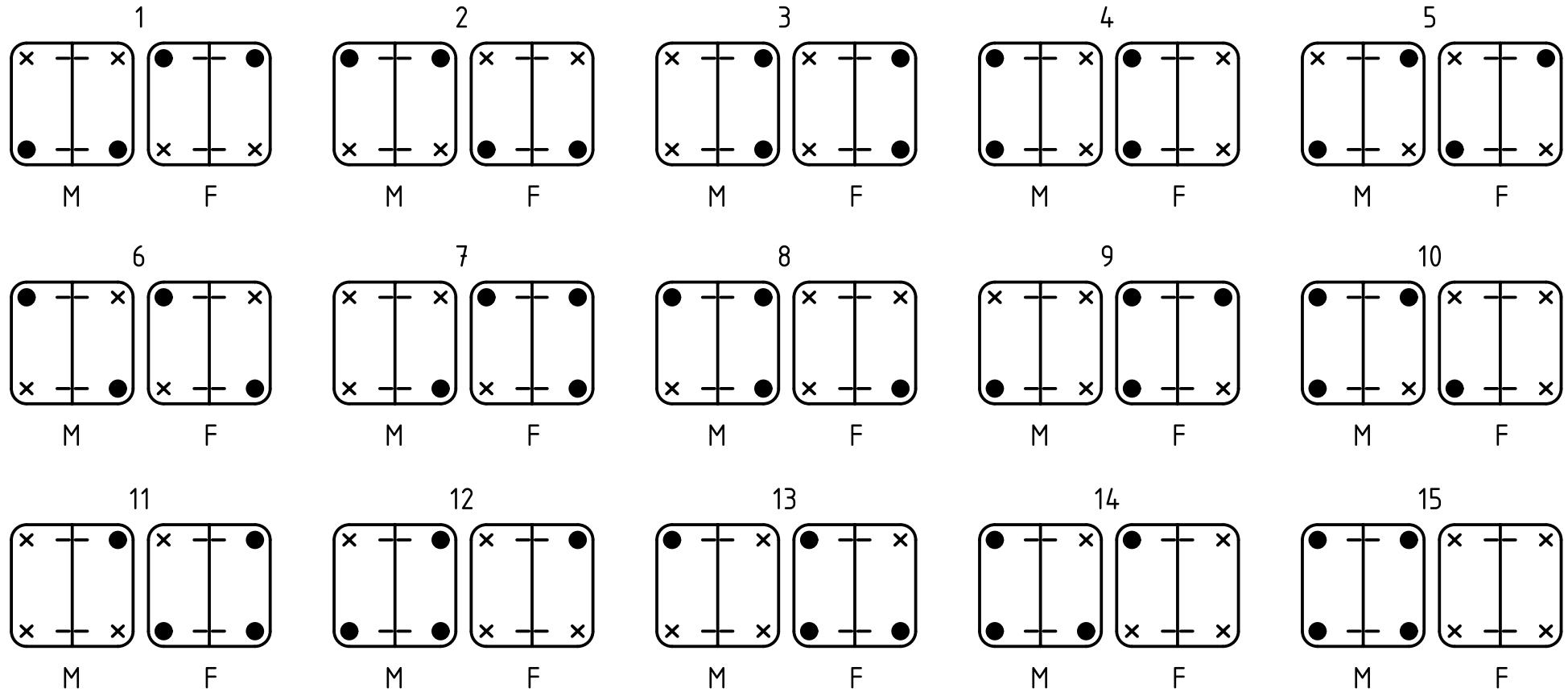


- F - frame or hinged frame for hoods
- M - frame or hinged frame for housings
- x - guide pins
- - guide bushes

	All rights reserved	Created by FINKEV	Inspected by MOOR	Standardisation TIEMANNA	Date 2014-06-05	State Final Release	
	Department EL PD - DE	Title Han-Modular Fuehrungsstifte				Doc-Key / ECM-Nr. 100175794/UGD/003/A 500000075753	
HARTING Electric GmbH & Co. KG D-32339 Espelkamp		Type TB	Number 09 14 000 990X			Rev. A	Page 2/3

coding system with code pins

for hoods/housings with two frame or two hinged frame



- F - frame or hinged frame for hoods
- M - frame or hinged frame for housings
- x - guide pins
- - guide bushes
- - mounting screw

	All rights reserved	Created by FINKEV	Inspected by MOOR	Standardisation TIEMANNA	Date 2014-06-05	State Final Release	
	Department EL PD - DE	Title Han-Modular Fuehrungsstifte				Doc-Key / ECM-Nr. 100175794/UGD/003/A 500000075753	
HARTING Electric GmbH & Co. KG D-32339 Espelkamp		Type TB	Number 09 14 000 990X			Rev. A	Page 3/3