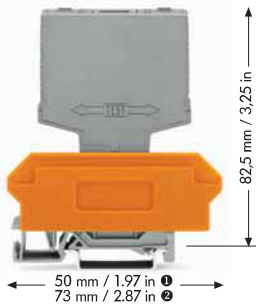


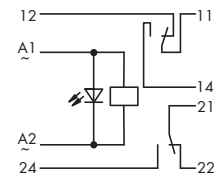
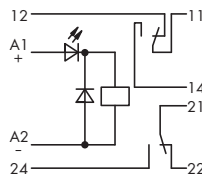
	<b>Relay with 2 changeover contacts</b>	<b>Relay with 2 changeover contacts</b>
	<b>Module width 20 mm / 0.787 in</b>	<b>Module width 20 mm / 0.787 in</b>



WSB marker cards

- Marking K; Item No.: 209-782
- Marking 1 ... 10; Item No.: 209-702
- Marking 12, A1, A2, 24, 11, 14, 21, 22; Item No.: 209-995

5 cards, each containing 10 strips with 10 markers



Description	V <sub>N</sub>	I <sub>N</sub>	Item No.	Pack. Unit	V <sub>N</sub>	I <sub>N</sub>	Item No.	Pack. Unit
Switching relay module	5/6 V DC	82.8 mA	<b>286-310</b>	1	5/6 V AC	174 mA	<b>286-510</b>	1
	12 V DC	46.1 mA	<b>286-311</b>	1	12 V AC	89 mA	<b>286-511</b>	1
	24 V DC	21.8 mA	<b>286-312</b>	1	24 V AC	47 mA	<b>286-512</b>	1
	48 V DC	10.3 mA	<b>286-313</b>	1	48 V AC	23.3 mA	<b>286-513</b>	1
	60 V DC	8.8 mA	<b>286-314</b>	1	60 V AC	18.1 mA	<b>286-514</b>	1
	115 V DC	4.9 mA	<b>286-315</b>	1	115 V AC	10.5 mA	<b>286-515</b>	1
	220 V DC	5 mA	<b>286-316</b>	1	230 V AC	5.5 mA	<b>286-516</b>	1

### Technical Data

Accessories see pages 150 ... 151

Accessories see pages 150 ... 151

Contact material	Ag Ni 0.15	Ag Ni 0.15
Max. switching voltage	300 V DC / 250 V AC	300 V DC / 250 V AC
Max. make / break current	0.2 s 30 A / 10 A	0.2 s 30 A / 10 A
Max. continuous current	7 A	7 A
Max. Switching power (resistive)	210 W / 1750 VA	210 W / 1750 VA
Pull-in / operating power	600 mW / 1000 mW	0.8 VA / 1 VA
Pull-in/drop-out/bounce time typ.	18 ms / 3 ms / 2 ms	15 ms / 5 ms / 2 ms
Dielectric strength contact-coil (AC, 1 min)	4 kV	4 kV
Nominal voltage acc. to VDE 0110 Part 1/4.97, IEC 60664-1	250 V / 4 kV / 3	250 V / 4 kV / 3
Mechanical life	30 x 10 <sup>7</sup> switching operations	30 x 10 <sup>7</sup> switching operations
Mechanical life at max. load (resistance)	2.5 x 10 <sup>5</sup> switching operations	2.5 x 10 <sup>5</sup> switching operations
Ambient operating temperature	-25 °C ... +40 °C	-25 °C ... +40 °C

Accessories	Item No.	Pack. Unit	Item No.	Pack. Unit
Terminal block for pluggable modules, with 2-conductor terminal blocks, orange separator ①	22 mm / 0.866 in <b>280-638</b>	1	22 mm / 0.866 in <b>280-638</b>	1
with 4-conductor terminal blocks, orange separator ②	22 mm / 0.866 in <b>280-628</b>	1	22 mm / 0.866 in <b>280-628</b>	1
with 4-conductor terminal blocks, marker plate ③	25 mm / 0.984 in <b>280-764</b>	1	25 mm / 0.984 in <b>280-764</b>	1
wire range 0.08 mm <sup>2</sup> ... 2.5 mm <sup>2</sup> / AWG 28 ... 14; stripped length 8 ... 9 mm / 0.33 in				