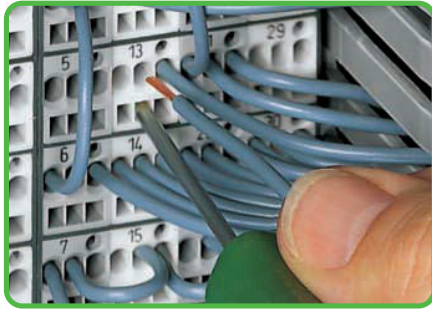


Matrix Patchboards 726 Series

CAGE CLAMP® connection



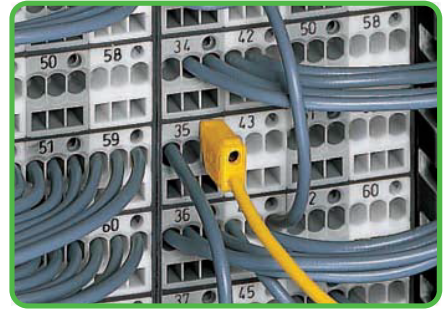
Conductor termination with 210-719 operating tool (2.5 x 0.4) mm.

Marking modules



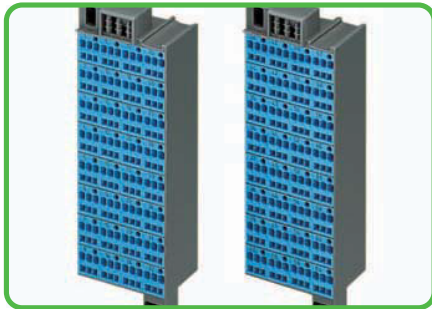
Marking modules (factory marked)
Side 1: 1, 2, 3, 4 ...

Testing



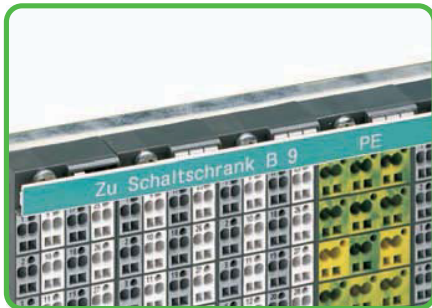
Testing with 2.3 mm Ø test plug (210-137).

Ex i versions

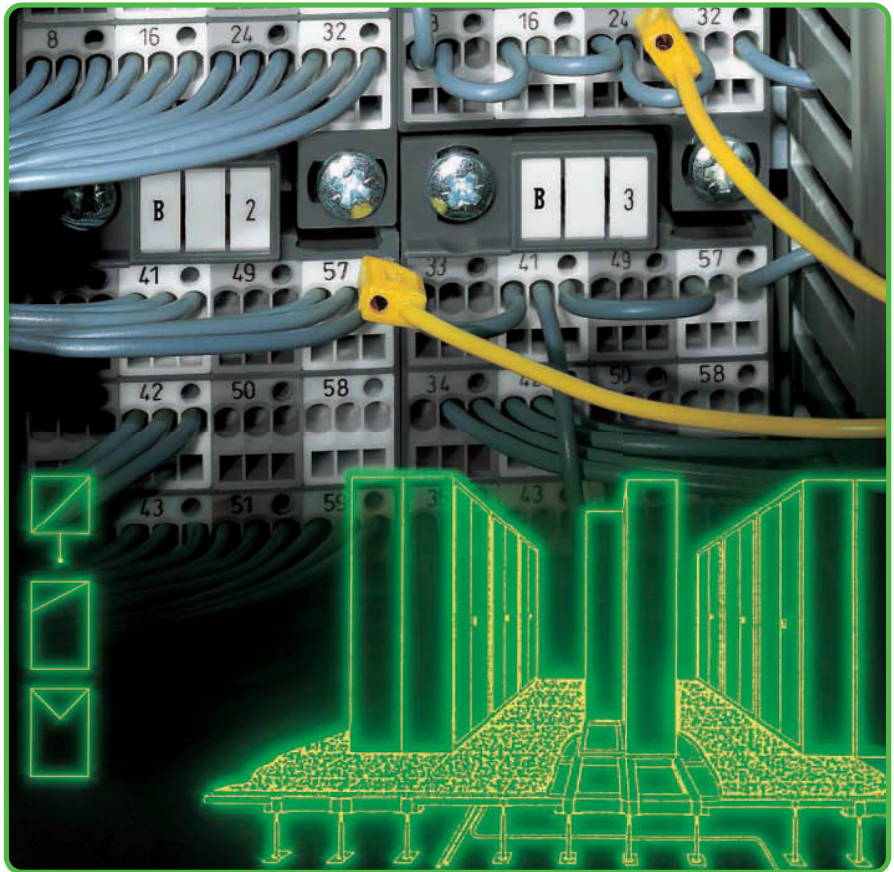


Blue matrix patchboards are suitable for Ex i applications.

Marking



WFB Continuous marking strip. Fits into the marker slot and the group marker carrier of the matrix patchboard.



Marking



Individual group marking with WSB Quick marking system.

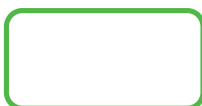
Installation examples



Matrix patchboards in a frame.

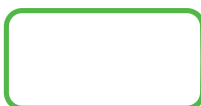


Matrix patchboards in 19" rack

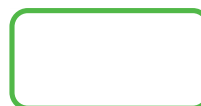


CAGE CLAMP®
clamps the following
copper conductors:*

solid



stranded

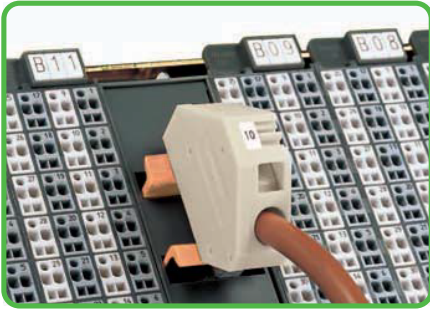


fine-stranded,
also with tinned
single strands

* For aluminum conductors, see notes in Section 14.

- Description and Handling -

Common potential matrix assembly

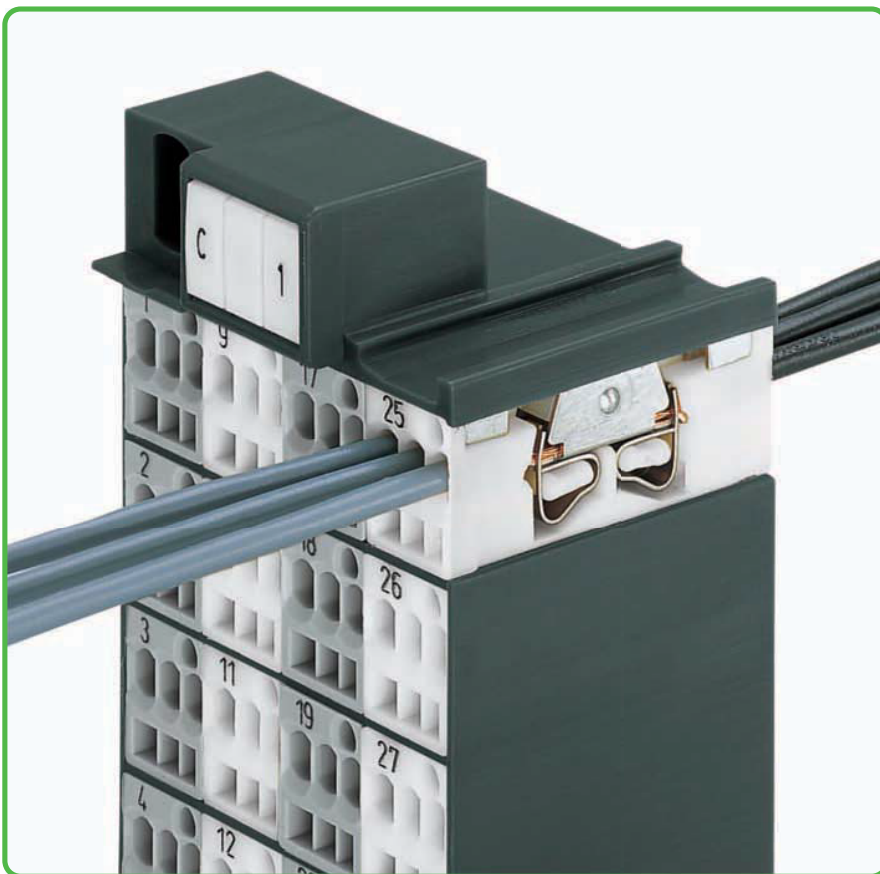


Example shown here with (white) supply terminal block.

Space saver



Slimline matrix patchboard (lower right), mounted upside down.



Snapping on an additional module with contact to mounting frame.

Additional module



Assembly of a matrix patchboard with additional module snapped on.
Direct connection to the mounting frame via contact plate.

Ferrules ①

	Max. conductor cross section (mm ² /AWG) without ferrule	Max. conductor cross section (mm ² /AWG) with ferrule			
		insulated		uninsulated	
Side 2	1.5	0.75	Item No./Color 216-202/grey	1	Item No. 216-123
Side 1	1.5	0.75	216-202/grey	1	216-123
Side 2	2.5	1.5	216-204/black	1.5	216-104
Side 1	1.5	0.75	216-202/grey	1	216-123



Terminating ferruled conductors.



fine-stranded,
tip-bonded



fine-stranded,
with ferrule ①
(gaslight crimped)



fine-stranded,
with pin terminal
(gaslight crimped)