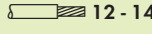
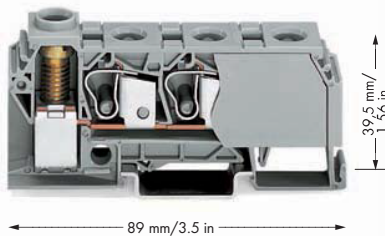


Distribution Terminal blocks 3 x 10 mm² CAGE CLAMP® Connection and 1 x 35 mm² Screw Clamp Connection 284 Series

0.2 - 10 mm² ① AWG 24 - 8
 6 - 35 mm² ② AWG 10 - 2
 800 V/8 kV/3 ③
 I_N 125 A
 Terminal block width 17.5 mm / 0.689 in
 12 - 14 mm / 0.51 in ④



Terminating a 35 mm²/AWG 2 conductor. Screw clamp connection, side-entry wiring.



- ① CAGE CLAMP® connection
- ② Screw clamp termination
- ③ 800 V = rated voltage
8 kV = rated surge voltage
3 = pollution degree
(also see Section 14)
- ④ Strip length, see packaging or instructions.
- ⑤ Individual arrangement: 125 A
Two jumpers combined in one clamping unit: 100 A



Item No.	Pack. Unit
Distribution terminal block, with 3 x CAGE CLAMP® connection 10 mm ² and 1 x screw clamp connection 35 mm ² , Screw torque: 3.5 Nm	
○ gray	284-621 15
● blue	284-624 15

Accessories for Distribution Terminal Blocks
 Appropriate marking system: WMB

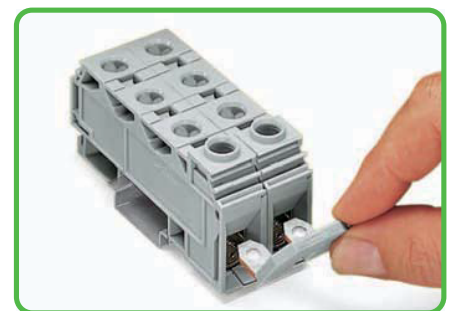
Comb-style jumper bar, insulated, ⑤	
I _N 125 A for 1 jumper,	
I _N 100 A for 2 jumpers	
gray	284-412 100 (4x25)

Screwless end stop, for DIN 35 rail, 6 mm wide	
gray	249-116 100 (4x25)

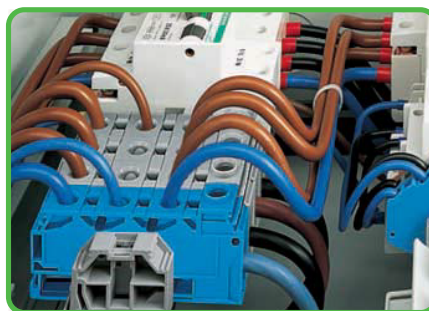
Screwless end stop, for DIN 35 rail, 10 mm wide	
gray	249-117 50 (2x25)



Terminating a 10 mm²/AWG 8 conductor CAGE CLAMP® connection, front-entry wiring.



Commoning with comb-style jumper bar.



Rail-mounted distribution terminal block with 35 mm²/AWG 2 screw clamp connection (front-entry) and 3 x 10 mm²/AWG 8 front-entry CAGE CLAMP® connection.

Snaps onto DIN 35 carrier rails per EN 60675. The terminal block enclosed on both sides, an end or intermediate plate is not necessary.

In case of maximum wiring with 3 x 10 mm²/AWG 8 on the distribution side the nominal current of 125A shall not be exceeded.