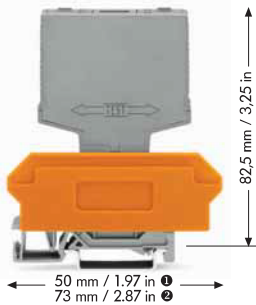


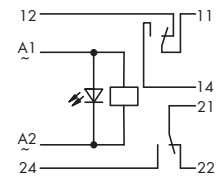
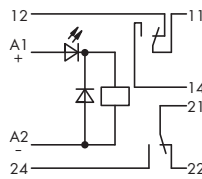
	Relay with 2 changeover contacts	Relay with 2 changeover contacts
	Module width 20 mm / 0.787 in	Module width 20 mm / 0.787 in



WSB marker cards

- Marking K; Item No.: 209-782
- Marking 1 ... 10; Item No.: 209-702
- Marking 12, A1, A2, 24, 11, 14, 21, 22; Item No.: 209-995

5 cards, each containing 10 strips with 10 markers



Description	V _N	I _N	Item No.	Pack. Unit	V _N	I _N	Item No.	Pack. Unit
Switching relay module	5/6 V DC	82.8 mA	286-310	1	5/6 V AC	174 mA	286-510	1
	12 V DC	46.1 mA	286-311	1	12 V AC	89 mA	286-511	1
	24 V DC	21.8 mA	286-312	1	24 V AC	47 mA	286-512	1
	48 V DC	10.3 mA	286-313	1	48 V AC	23.3 mA	286-513	1
	60 V DC	8.8 mA	286-314	1	60 V AC	18.1 mA	286-514	1
	115 V DC	4.9 mA	286-315	1	115 V AC	10.5 mA	286-515	1
	220 V DC	5 mA	286-316	1	230 V AC	5.5 mA	286-516	1

Technical Data

Accessories see pages 150 ... 151

Accessories see pages 150 ... 151

Technical Data	Accessories see pages 150 ... 151	Accessories see pages 150 ... 151
Contact material	Ag Ni 0.15	Ag Ni 0.15
Max. switching voltage	300 V DC / 250 V AC	300 V DC / 250 V AC
Max. make / break current	0.2 s 30 A / 10 A	0.2 s 30 A / 10 A
Max. continuous current	7 A	7 A
Max. Switching power (resistive)	210 W / 1750 VA	210 W / 1750 VA
Pull-in / operating power	600 mW / 1000 mW	0.8 VA / 1 VA
Pull-in/drop-out/bounce time typ.	18 ms / 3 ms / 2 ms	15 ms / 5 ms / 2 ms
Dielectric strength contact-coil (AC, 1 min)	4 kV	4 kV
Nominal voltage acc. to VDE 0110 Part 1/4.97, IEC 60664-1	250 V / 4 kV / 3	250 V / 4 kV / 3
Mechanical life	30 x 10 ⁷ switching operations	30 x 10 ⁷ switching operations
Mechanical life at max. load (resistance)	2.5 x 10 ⁵ switching operations	2.5 x 10 ⁵ switching operations
Ambient operating temperature	-25 °C ... +40 °C	-25 °C ... +40 °C

Accessories	Item No.	Pack. Unit	Item No.	Pack. Unit
Terminal block for pluggable modules, with 2-conductor terminal blocks, orange separator ①	22 mm / 0.866 in 280-638	1	22 mm / 0.866 in 280-638	1
with 4-conductor terminal blocks, orange separator ②	22 mm / 0.866 in 280-628	1	22 mm / 0.866 in 280-628	1
with 4-conductor terminal blocks, marker plate ③	25 mm / 0.984 in 280-764	1	25 mm / 0.984 in 280-764	1
wire range 0.08 mm ² ... 2.5 mm ² / AWG 28 ... 14; stripped length 8 ... 9 mm / 0.33 in				