

## WAVESERIES WAS5 PRO RTD

**Weidmüller Interface GmbH & Co. KG**  
 Klingenbergstraße 16  
 D-32758 Detmold  
 Germany  
 Fon: +49 5231 14-0  
 Fax: +49 5231 14-292083  
 www.weidmueller.com



Configurable RTD signal isolator/converter WAS5/WAZ5 PRO RTD with external power supply with 17.5 mm width, for recording, transforming and isolating RTD sensors in standardised DC current and voltage signals  
 2-/3-/4-wire PT100, PT1000, Ni100, Ni10000, Cu10/25/50/100, potentiometers  
 or fixed resistors can optionally be connected on the input side. The input and output parameters (e.g. sensor type, temperature range and standardised output signal) can be configured using the DIP switches. The input/output channels and 24 V DC power supply are completely isolated with 4 kV. The PRO RTD isolating transformers come with either a screw or tension-clamp wire connection. The 24 V DC supply voltage can be bridged using pluggable ZQV 2.5N jumpers on the module side. Most models can be adjusted and set using the WAVETOOL program available from Weidmüller's website. They can be used in many applications around the world because of their international approvals such as cULus, CULusEX and GL.

### General ordering data

Type	WAS5 PRO RTD
Order No.	<a href="#">8560700000</a>
Version	RTD isolating transformer, Screw connection
GTIN (EAN)	4032248207312
Qty.	1 pc(s).

## WAVESERIES WAS5 PRO RTD

**Weidmüller Interface GmbH & Co. KG**  
 Klingenbergstraße 16  
 D-32758 Detmold  
 Germany  
 Fon: +49 5231 14-0  
 Fax: +49 5231 14-292083  
 www.weidmueller.com

## Technische Daten

### Dimensions and weights

Length	92.4 mm	Width	17.5 mm
Depth	112.4 mm	Net weight	138 g

### Temperatures

Operating temperature	0 °C...+55 °C	Storage temperature	-20 °C...+85 °C
-----------------------	---------------	---------------------	-----------------

### Probability of failure

MTTF	270 Years
------	-----------

### Input

Line resistance in measuring circuit	50 Ω for 3- and 4-conductor	Number of inputs	1
Temperature input range	Configurable	Sensor	PT100/2-/3-/4-wire, Ni100/2-/3-/4-wire, potentiometer: min. 100 Ω, max. 100 kΩ, resistance: 0-450 Ω

### Output

Wire break detection	LED flashing (output value: > 20 mA, >10 V)	Fine adjustment	± 5 %, Version 1 and later: ≥ 12.5 % / potentiometer: 12.5%...25%
load impedance voltage	≥ 1 kΩ	Number of outputs	1
load impedance current	≤ 600 Ω	Offset voltage	max. 0.05 V
Offset current	max. 100 μA	Status indicator	Module active: LED on/ wire breakage: LED flashing/ Error: LED off
Output voltage, note	0...10 V	Output current	0...20 mA, 4...20 mA

### General data

Configuration	DIP switch, Potentiometer	Current-carrying capacity of cross-connect.	≤ 2 A
Galvanic isolation	3-way isolator	Input/Output	configurable
Linearity	Yes	Mounting rail	TS 35
Power consumption	830...880...980mW at I <sub>OUT</sub> = 20 mA	Step response time	fast/slow: 2-/3-/4- conductor: 1.2 s/2.2 s; potentiometer: 0.5 s/1.1 s
Temperature coefficient	Measuring range ≥ 200 K: ≤ 200 ppm/K 100 K ≤ measuring range < 200 K: ≤ 250 ppm/K 40 K ≤ measuring range < 100 K: ≤ 400 ppm/K	Type of connection	Screw connection

## WAVESERIES WAS5 PRO RTD

**Weidmüller Interface GmbH & Co. KG**  
 Klingenbergstraße 16  
 D-32758 Detmold  
 Germany  
 Fon: +49 5231 14-0  
 Fax: +49 5231 14-292083  
 www.weidmueller.com

## Technische Daten

### Insulation coordination

Clearance & creepage distances	≥ 3 mm	EMC standards	EN 55011, EN 61000-6
Galvanic isolation	3-way isolator	Impulse withstand voltage	4 kV
Insulation voltage	2 kV <sub>eff</sub> / 5 s	Insulation voltage input or output/rail	4 kV <sub>eff</sub> / 1 min.
Insulation voltage input or output/supply	2 kV <sub>eff</sub> / 5 s	Pollution severity	2
Rated voltage	300 V	Standards	DIN EN 50178, DIN EN 61000-4-2
Surge voltage category	III		

### Classifications

ETIM 3.0	EC001774	UNSPSC	30-21-18-01
eClass 5.1	27-21-01-07	eClass 6.2	27-21-01-07
eClass 7.1	27-21-01-07		

### Product information

Descriptive text accessories Cross-connector for power supplies and markers – refer to Accessories

### Approvals

Approvals



ROHS Conform

### Downloads

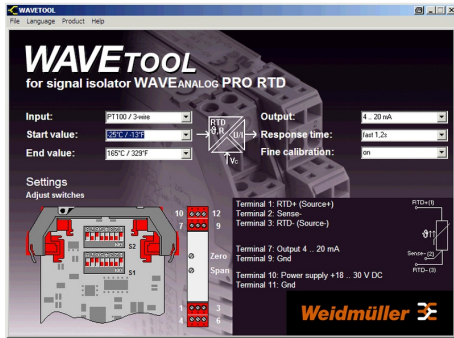
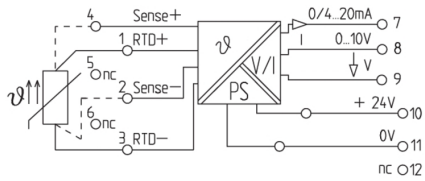
Package insert	<a href="#">instruction sheet.pdf</a>
Software	<a href="#">WaveTool.zip</a>
Declaration of Conformity	<a href="#">Declaration of Conformity.pdf</a>

**WAVESERIES  
WAS5 PRO RTD**

**Weidmüller Interface GmbH & Co. KG**  
 Klingenbergstraße 16  
 D-32758 Detmold  
 Germany  
 Fon: +49 5231 14-0  
 Fax: +49 5231 14-292083  
 www.weidmueller.com

**Zeichnungen**

**Electric symbol**



Screenshot example, Wave tool software