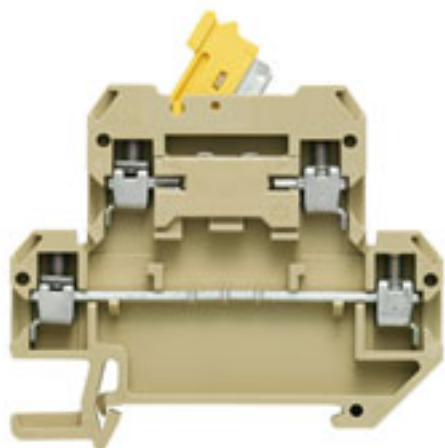


**W terminal with special connection  
DKT 4/35**

**Weidmüller Interface GmbH & Co. KG**  
Klingenbergstraße 16  
D-32758 Detmold  
Germany  
Fon: +49 5231 14-0  
Fax: +49 5231 14-292083  
www.weidmueller.com



Disconnect terminals enable circuits to be quickly and safely isolated, e.g. in order to carry out maintenance or repair work.

**General ordering data**

Type	DKT 4/35
Order No.	<a href="#">0687460000</a>
Version	W terminal with special connection, Disconnect and modular disconnect terminal, Rated cross-section: 4 mm <sup>2</sup> , Screw connection, PA 66, Direct mounting
GTIN (EAN)	4008190148690
Qty.	100 pc(s).

## W terminal with special connection DKT 4/35

**Weidmüller Interface GmbH & Co. KG**  
Klingenbergstraße 16  
D-32758 Detmold  
Germany  
Fon: +49 5231 14-0  
Fax: +49 5231 14-292083  
www.weidmueller.com

## Technische Daten

### Dimensions and weights

Length	65 mm	Width	6 mm
Height of lowest version	56.5 mm	Net weight	16.15 g

### Temperatures

Operating temperature	Storage temperature
-----------------------	---------------------

### Additional technical data

Explosion-tested version	No	Installation advice	Direct mounting
Number of similar terminals	1	Open sides	right
Type of mounting	Snap-on		

### CSA ratings data

Certificate No. (CSA)	12400-281	Voltage size C (CSA)	300 V
Current size C (CSA)	25 A	Wire cross section max. (CSA)	12 AWG
Wire cross section min. (CSA)	26 AWG		

### Clampable wires (additional connection)

Conductor cross-section, flexible plus plastic collar DIN 46228/1, further connection, min.	0.5 mm <sup>2</sup>	Conductor cross-section, flexible plus plastic collar DIN 46228/1, further connection, max.	2.5 mm <sup>2</sup>
---	---------------------	---	---------------------

### Clampable wires (rated connection)

Type of connection	Screw connection	Stripping length	9 mm
Blade size	0.6 x 3.5 mm	Connection direction	on side
Number of connections	4	Clamping range, rated connection, min.	0.13 mm <sup>2</sup>
Clamping range, rated connection, max.	4 mm <sup>2</sup>	Clamping screw	M 3
Tightening torque, min.	0.5 Nm	Tightening torque, max.	1 Nm
Torque level with DMS electric screwdriver	2	Gauge to IEC 60947-1	A3
Wire connection cross section, solid core, max. rated connection	0.2 mm <sup>2</sup>	Wire connection cross section, solid core max. rated connection	4 mm <sup>2</sup>
Wire connection cross section, stranded, rated connection, min.	1.5 mm <sup>2</sup>	Wire connection cross section, stranded, rated connection, max.	4 mm <sup>2</sup>
Wire connection cross section, finely stranded, max.	4 mm <sup>2</sup>	Wire connection cross-section, finely stranded, min.	0.2 mm <sup>2</sup>
Wire connection cross section, finely stranded with wire-end ferrules DIN 46228/1, rated connection, min.	0.5 mm <sup>2</sup>	Wire connection cross section, finely stranded with wire-end ferrules DIN 46228/1, rated connection, max.	2.5 mm <sup>2</sup>
Twin wire-end ferrules, min.	0.5 mm <sup>2</sup>	Twin wire-end ferrules, max.	1.5 mm <sup>2</sup>
Wire connection cross section AWG, min.	AWG 26	Wire connection cross section AWG, max.	AWG 12

### Disconnect terminals

Cross-disconnect	without	Integral test socket	No
Slitting	Pivoting	Tightening torque, max.	1 Nm
Tightening torque, min.	0.5 Nm	Torque level with DMS electric screwdriver	2

## W terminal with special connection DKT 4/35

**Weidmüller Interface GmbH & Co. KG**  
 Klingenbergstraße 16  
 D-32758 Detmold  
 Germany  
 Fon: +49 5231 14-0  
 Fax: +49 5231 14-292083  
 www.weidmueller.com

## Technische Daten

### Rated data

Rated cross-section	4 mm <sup>2</sup>	Rated voltage	400 V
Rated impulse withstand voltage	6 kV	Rated current	10 A
Current at maximum wires	10 A	Standards	IEC 60947-7-1
Pollution severity	3		

### UL ratings data

Certificate No. (UR)	E60693	Voltage size C (UR)	300 V
Current size C (UR)	10 A	Conductor size Factory wiring max. (UR)	12 AWG
Conductor size Factory wiring min. (UR)	26 AWG	Conductor size Field wiring max. (UR)	12 AWG

### Material data

Insulating material	PA 66	Material	PA 66
Colour	Beige	UL 94 flammability rating	V-2

### System specifications

Product family	W terminal with special connection	Type of connection	Screw connection
Connection direction	on side	Number of levels	2
Number of connections	4	No. of clamping points per level	2
Levels cross-connected internally	No	End cover plate required	Yes

### Classifications

ETIM 3.0	EC000902	UNSPSC	30-21-18-11
eClass 5.1	27-14-11-26	eClass 6.2	27-14-11-26
eClass 7.1	27-14-11-26		

### Product information

Descriptive text ordering data	DKT 4/35 2 StB Order No. 0327960000
--------------------------------	-------------------------------------

### Approvals

Approvals



ROHS	Conform
------	---------