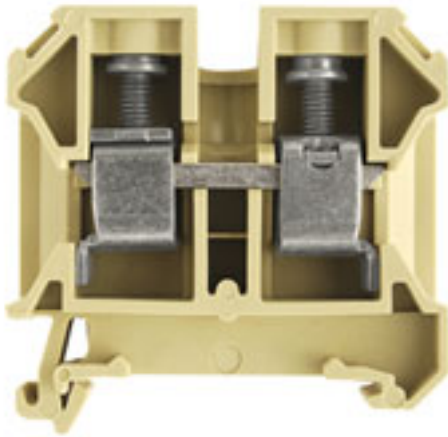


**SAK Series  
SAK 16/35 PA**

**Weidmüller Interface GmbH & Co. KG**  
Klingenbergstraße 16  
D-32758 Detmold  
Germany  
Fon: +49 5231 14-0  
Fax: +49 5231 14-292083  
www.weidmueller.com



The Weidmüller SAK feed-through terminals satisfy the requirements of IEC 60947-1 and are available with rated cross-sections from 0.08 mm<sup>2</sup> to 240 mm<sup>2</sup>.

**General ordering data**

Type	SAK 16/35 PA
Order No.	<a href="#">0380660000</a>
GTIN (EAN)	4008190118204
Qty.	50 pc(s).

## SAK Series SAK 16/35 PA

**Weidmüller Interface GmbH & Co. KG**  
 Klingenbergstraße 16  
 D-32758 Detmold  
 Germany  
 Fon: +49 5231 14-0  
 Fax: +49 5231 14-292083  
 www.weidmueller.com

## Technische Daten

### Dimensions and weights

Length	50 mm	Width	12 mm
Height	57.5 mm	Height of lowest version	57.5 mm
Net weight	26.5 g		

### Temperatures

Operating temperature		Storage temperature	
Continuous operating temp., min.	-50 °C	Continuous operating temp., max.	100 °C

### Rated data IECEx/ATEX

Certificate No. (ATEX)	KEMA97ATEX1798U	ATEX certificate	IECExKEM06.0014U
ATEX certificate	KEMA97ATEX1798U_e.pdf	Certificate No. (IECEX)	IECExKEM06.0014U
IEC Ex certificate	IECExKEM06.0014U_e.pdf	Max. voltage (ATEX)	690 V
Current (ATEX)	66 A	Wire cross section max. (ATEX)	16 mm <sup>2</sup>
Max. voltage (IECEX)	690 V	Current (IECEX)	66 A
Wire cross section max. (IECEX)	16 mm <sup>2</sup>	Voltage, cross-connection	CrossConnectionGuide.pdf
Operating temperature range	For operating temperature range see EC Design Test Certificate / IEC Ex-Certificate of Conformity	Marking EN 60079-7	
Marking ATEX Directive 94/9/EC	II 2 G D		Ex e II

### Additional technical data

Explosion-tested version	No	Number of similar terminals	1
Open sides	right	Type of mounting	Snap-on
Version	Screw connection, for screwable cross-connection, One end without connector		

### CSA ratings data

Certificate No. (CSA)	154685-1501714	Voltage size C (CSA)	600 V
Current size C (CSA)	87 A	Wire cross section max. (CSA)	4 AWG
Wire cross section min. (CSA)	14 AWG		

### Clampable wires (additional connection)

Conductor cross-section, flexible plus plastic collar DIN 46228/1, further connection, min.	4 mm <sup>2</sup>	Conductor cross-section, flexible plus plastic collar DIN 46228/1, further connection, max.	16 mm <sup>2</sup>
---	-------------------	---	--------------------

## SAK Series SAK 16/35 PA

**Weidmüller Interface GmbH & Co. KG**  
 Klingenbergstraße 16  
 D-32758 Detmold  
 Germany  
 Fon: +49 5231 14-0  
 Fax: +49 5231 14-292083  
 www.weidmueller.com

## Technische Daten

### Clampable wires (rated connection)

Type of connection	Screw connection	Stripping length	15 mm
Blade size	1.0 x 5.5 mm	Connection direction	on side
Number of connections	2	Clamping range, rated connection, min.	2.5 mm <sup>2</sup>
Clamping range, rated connection, max.	16 mm <sup>2</sup>	Clamping screw	M 4
Tightening torque, min.	2 Nm	Tightening torque, max.	2.4 Nm
Torque level with DMS electric screwdriver	4	Gauge to IEC 60947-1	B6
Wire connection cross section, solid core, max. rated connection	2.5 mm <sup>2</sup>	Wire connection cross section, solid core max. rated connection	16 mm <sup>2</sup>
Wire connection cross section, stranded, rated connection, min.	4 mm <sup>2</sup>	Wire connection cross section, stranded, rated connection, max.	16 mm <sup>2</sup>
Wire connection cross section, finely stranded, max.	16 mm <sup>2</sup>	Wire connection cross-section, finely stranded, min.	4 mm <sup>2</sup>
Wire connection cross section, finely stranded with wire-end ferrules DIN 46228/1, rated connection, min.	4 mm <sup>2</sup>	Wire connection cross section, finely stranded with wire-end ferrules DIN 46228/1, rated connection, max.	16 mm <sup>2</sup>
Cross-section for connected conductor, finely stranded with wire-end ferrules and plastic collars DIN 46228/4, rated connection, min.	4 mm <sup>2</sup>	Wire connection cross-section, finely stranded with wire-end ferrules and plastic collars DIN 46228/4, rated connection, max.	16 mm <sup>2</sup>
Twin wire-end ferrules, min.	1.5 mm <sup>2</sup>	Twin wire-end ferrules, max.	10 mm <sup>2</sup>
Wire connection cross section AWG, min.	AWG 12	Wire connection cross section AWG, max.	AWG 6

### Rated data

Rated cross-section	16 mm <sup>2</sup>	Rated voltage	1,000 V
Rated impulse withstand voltage	8 kV	Rated current	76 A
Current at maximum wires	76 A	Standards	IEC 60947-7-1
Pollution severity	3		

### UL ratings data

Certificate No. (UR)	E60693	Voltage size C (UR)	600 V
Current size C (UR)	80 A	Conductor size Factory wiring max. (UR)	4 AWG
Conductor size Factory wiring min. (UR)	12 AWG	Conductor size Field wiring max. (UR)	4 AWG

### Material data

Insulating material	PA 66	Material	PA 66
Colour	Beige	UL 94 flammability rating	V-2

### System specifications

Product family	SAK Series	Type of connection	Screw connection
Connection direction	on side	Number of levels	1
Number of connections	2	No. of clamping points per level	2
Levels cross-connected internally	No	Mounting rail	TS 35
End cover plate required	Yes		

### Classifications

ETIM 3.0	EC000897	UNSPSC	30-21-18-11
eClass 5.1	27-14-11-20	eClass 6.2	27-14-11-20
eClass 7.1	27-14-11-20		

**Datenblatt**

**SAK Series**  
**SAK 16/35 PA**

**Weidmüller Interface GmbH & Co. KG**  
 Klingenbergstraße 16  
 D-32758 Detmold  
 Germany  
 Fon: +49 5231 14-0  
 Fax: +49 5231 14-292083  
 www.weidmueller.com

**Technische Daten**

**Product information**

Descriptive text ordering data	If QIs are aligned side by side, then a TW/AP must be used.
Descriptive text technical data	Twin wire end ferrules ZH 2.5 - ZH 16 can be used.

**Approvals**

Approvals



ROHS	Conform
------	---------