

WAVESERIES WAS4 PRO DC/DC

Weidmüller Interface GmbH & Co. KG
 Klingenbergstraße 16
 D-32758 Detmold
 Germany
 Fon: +49 5231 14-0
 Fax: +49 5231 14-292083
 www.weidmueller.com



The configurable WAS4/WAZ4 PRO DC/DC: a U/I-DC-signal isolating converter with external power supply in 12.5 mm width, for transmitting and isolating analogue DC current signals ($\pm 0.1 \dots \pm 100$ mA) and voltage signals (± 20 mV... ± 200 V).

Up to 440 fixed input and output parameters can be configured using the DIP switches and potentiometer (span/offset). The input/output channels and power supply are completely isolated with 4 kV.

Because of its 20...253 VAC/DC wide-range power supply, the PRO DC can be used in many applications regardless of its position.

The signal isolating converter features an adjustable transmission frequency (10 Hz/10 kHz), low power dissipation, and a wide temperature range (-10 °C to +70 °C).

The WAVETOOL software can be used as a universal setting aid. The WAVETOOL software found at www.weidmueller.com can be used for configuration. The PRO DC is optionally available with screw or tension-clamp wire connections. The signal isolating converter has international approvals (cULus, cULusEX, ATEX Zone2, GL) which enable it to be used worldwide for many explosive-risk applications.

General ordering data

Type	WAS4 PRO DC/DC
Order No.	8560740000
Version	Signal converter/disconnector, Screw connection
GTIN (EAN)	4032248207350
Qty.	1 pc(s).

WAVESERIES WAS4 PRO DC/DC

Weidmüller Interface GmbH & Co. KG
 Klingenbergstraße 16
 D-32758 Detmold
 Germany
 Fon: +49 5231 14-0
 Fax: +49 5231 14-292083
 www.weidmueller.com

Technische Daten

Dimensions and weights

Length	92.4 mm	Width	12.5 mm
Depth	112.4 mm	Net weight	132.2 g

Temperatures

Operating temperature	-10 °C...+70 °C	Storage temperature	-40 °C...+85 °C
-----------------------	-----------------	---------------------	-----------------

Probability of failure

MTBF	76 Years	MTTF	76 Years
------	----------	------	----------

Input

Input current	$\pm 0.1\text{mA} \dots \pm 100\text{mA}$	Number of inputs	1
Input resistance, voltage	approx. 1 M Ω	Input resistance, current	< 5 mA: approx. 100 Ω ; >5 mA: approx. 5 Ω
Input voltage	$\pm 20\text{mV} \dots \pm 200\text{V}$		

Output

Adjustment range, zero point	$\pm 25\%$ of the measuring span of selected output range	Adjustment range, amplification	0.33...3.30 x end value of selected output range
Cut-off frequency (-3 dB)	> 10 kHz / < 10 Hz	load impedance voltage	$\geq 1\text{k}\Omega$
Number of outputs	1	load impedance current	$\leq 600\text{ }\mu\text{A}$
Offset voltage	10 mV	Offset current	20 μA
Status indicator	Green LED	Displacement	-100%, -50%, 0%, 50%, 100% of measuring span
Output voltage, note	0... $\pm 10\text{V}$	Output current	0... $\pm 20\text{mA}$

General data

Accuracy	< 0.2 %	Configuration	DIP switch, Potentiometer
Galvanic isolation	3-way isolator	Input/Output	configurable
Mounting rail	TS 35	Power consumption	ca. 1 W
Step response time	120 μs at limiting-frequency setting > 10 kHz, 75 ms at limiting-frequency setting < 10 Hz	Temperature coefficient	$\leq 60\text{ ppm/K}$ of final value
Type of connection	Screw connection		

Insulation coordination

EMC standards	DIN EN 61326, EN 61000-6 /-2, EN 61709 (SN 29500) MTBF	Galvanic isolation	3-way isolator
Impulse withstand voltage	5 kV, 1.2/50 μs (IEC 255-4)	Insulation voltage	4 kV _{eff}
Insulation voltage input or output/rail	4 kV _{eff}	Insulation voltage input or output/supply	4 kV _{eff}
Pollution severity	2	Rated voltage	600 V
Standards	DIN EN 50178, DIN EN 61000-4-2	Surge voltage category	III

Datenblatt

**WAVESERIES
WAS4 PRO DC/DC**

Weidmüller Interface GmbH & Co. KG
 Klingenbergstraße 16
 D-32758 Detmold
 Germany
 Fon: +49 5231 14-0
 Fax: +49 5231 14-292083
 www.weidmueller.com

Technische Daten

Classifications

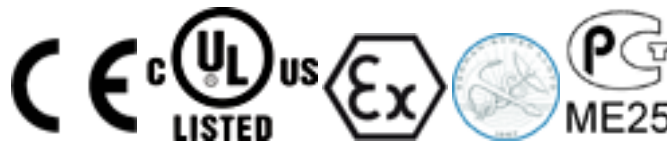
ETIM 3.0	EC001774	eClass 6.2	27-21-01-20
eClass 7.1	27-21-01-20		

Product information

Descriptive text accessories Markers – refer to Accessories.

Approvals

Approvals



ROHS Conform

Downloads

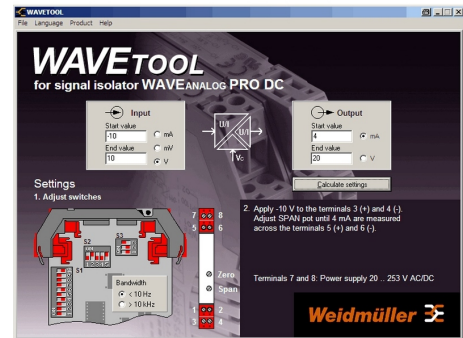
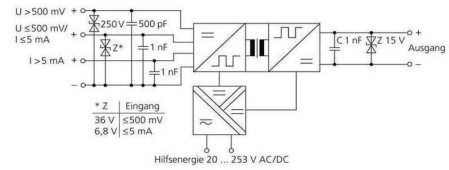
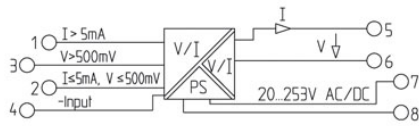
Package insert	instruction sheet.pdf
Software	WaveTool.zip
Declaration of Conformity	Declaration of Conformity.pdf
EPLAN	8560740000.ema
3D Modell	

**WAVESERIES
WAS4 PRO DC/DC**

Weidmüller Interface GmbH & Co. KG
 Klingenbergstraße 16
 D-32758 Detmold
 Germany
 Fon: +49 5231 14-0
 Fax: +49 5231 14-292083
 www.weidmueller.com

Zeichnungen

Electric symbol



Screenshot example, Wave tool software