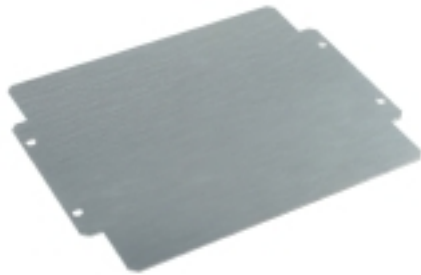


## K MOPL K71 STAHL

**Weidmüller Interface GmbH & Co. KG**  
 Klingenbergstraße 16  
 D-32758 Detmold  
 Germany  
 Fon: +49 5231 14-0  
 Fax: +49 5231 14-292083  
 www.weidmueller.com



For many years, the name Klippon® has stood for competence and quality in enclosures. The enclosures are ideal for turnkey customised solutions for standard industrial applications and for explosive-risk applications.

Improved products that meet all application requirements: this was Weidmüller's aim during the update of the Klippon® K housing series. Weidmüller delivers many types of aluminium enclosures; they are designed to fit precisely with a wide range of customer requirements and applications.

Our comprehensive product line provides the following advantages:

- Available in two different surfaces: natural and powder-coated (RAL 7001)
- Available normally with silicone or chloroprene gasket seal
- A uniform Torx-slotted screw head is used for over 19 different housing sizes.
- Mounting holes not within the sealed area
- High degree of protection: IP66, IP67 and IP68
- Impact resistance of up to 10 Joules
- The housings are certified by ATEX, GOST, GOST Ex, cULus, Russian Maritime Register, German Lloyd, as well as the empty housing standard.
- Alloy is resistant to salt water

- Standardised distributor housings with threaded holes and a variety of terminal configurations

### General ordering data

Type	MOPL K71 STAHL
Order No.	<a href="#">3073140000</a>
Version	Mounting plate, Mounting Plate, Sheet steel, galvanised, 264 mm
GTIN (EAN)	4008190858070
Qty.	1 pc(s).

# Datenblatt

## K MOPL K71 STAHL

**Weidmüller Interface GmbH & Co. KG**  
 Klingenbergstraße 16  
 D-32758 Detmold  
 Germany  
 Fon: +49 5231 14-0  
 Fax: +49 5231 14-292083  
 www.weidmueller.com

## Technische Daten

### Dimensions and weights

Width	264 mm	Mounting dimension - width	250 mm
Net weight	789 g		

### General information

Material thickness	2 mm	Material	Sheet steel, galvanised
Impact resistance	10.00 J		

### General information on accessories

Material	Sheet steel, galvanised	Material thickness	2 mm
Mounting dimension - width	250 mm	Type of fixing	Screwed

### Classifications

ETIM 3.0	EC000318	UNSPSC	31-16-23-03
eClass 5.1	27-18-92-07	eClass 6.2	27-18-92-61
eClass 7.1	27-18-92-61		

### Approvals

Approvals	
ROHS	Conform