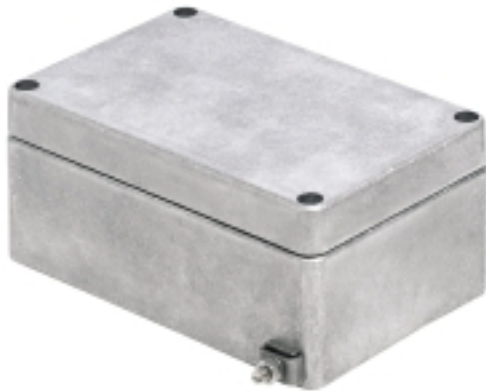


## K KLIPPON K4

**Weidmüller Interface GmbH & Co. KG**  
 Klingenbergstraße 16  
 D-32758 Detmold  
 Germany  
 Fon: +49 5231 14-0  
 Fax: +49 5231 14-292083  
 www.weidmueller.com



For many years, the name Klippon® has stood for competence and quality in enclosures. The enclosures are ideal for turnkey customised solutions for standard industrial applications and for explosive-risk applications.

Improved products that meet all application requirements: this was Weidmüller's aim during the update of the Klippon® K housing series. Weidmüller delivers many types of aluminium enclosures; they are designed to fit precisely with a wide range of customer requirements and applications.

Our comprehensive product line provides the following advantages:

- Available in two different surfaces: natural and powder-coated (RAL 7001)
- Available normally with silicone or chloroprene gasket seal
- A uniform Torx-slotted screw head is used for over 19 different housing sizes.
- Mounting holes not within the sealed area
- High degree of protection: IP66, IP67 and IP68
- Impact resistance of up to 10 Joules
- The housings are certified by ATEX, GOST, GOST Ex, cULus, Russian Maritime Register, German Lloyd, as well as the empty housing standard.
- Alloy is resistant to salt water

- Standardised distributor housings with threaded holes and a variety of terminal configurations

### General ordering data

Type	KLIPPON K4
Order No.	<a href="#">0342300000</a>
Version	Enclosures, Aluminium AISi12, 82 mm, 72 mm, 130 mm
GTIN (EAN)	4008190054991
Qty.	1 pc(s).

**K  
KLIPPON K4**

**Weidmüller Interface GmbH & Co. KG**  
 Klingenbergstraße 16  
 D-32758 Detmold  
 Germany  
 Fon: +49 5231 14-0  
 Fax: +49 5231 14-292083  
 www.weidmueller.com

**Technische Daten**
**Dimensions and weights**

Length	72 mm	Width	130 mm
Height	82 mm	Mounting dimension - width	98 mm
Mounting dimension - height	68 mm	Weight	620 g
Net weight	633 g		

**Cable glands, left**

M12 (3)	2	M16 (3)	2
M20 (3)	1	M25 (3)	1
M32 (3)	1		

**Cable glands, right**

M12 (2)	2	M16 (2)	2
M20 (2)	1	M25 (2)	1
M32 (2)	1	Side of enclosure	left, right

**Cable glands, top/bottom**

M12	5	M16	3
M20	2	M25	2
Side of enclosure	left, right		

**General information**

Areas of use	Process industry, Transportation, Marine engineering, Packaging industry, Harbour facilities, Machine construction	Material	Aluminium AlSi12
Seal material	Neoprene	Surface finish	untreated
Operating temperature, min.	-40 °C	Operating temperature, max.	85 °C
Impact resistance	10.00 J	Protection degree	IP 66, IP 67, IP 68
Note: protection class	IP68 (t=72h, h=1m)	Enclosure attachment	Holes 5 mm
Cover attachment	M4 torx stainless steel screws with slot	Integral fixing	Threaded holes M5

**horizontal assembly**

WDU 2,5 ZDU 2,5 IDU 2,5	*	WDU 4 ZDU 4	*
-------------------------	---	-------------	---

**vertical assembly**

WDU 10 ZDU 10 (2)	1x2	WDU 2,5 ZDU 2,5 IDU 2,5 (2)	1x5
WDU 4 ZDU 4 (2)	1x4	WDU 6 ZDU 6 (2)	1x3

**Classifications**

ETIM 3.0	EC000058	UNSPSC	31-26-15-02
eClass 5.1	27-14-91-07	eClass 6.2	27-14-91-07
eClass 7.1	27-14-91-07		

**K  
KLIPPON K4**

**Weidmüller Interface GmbH & Co. KG**  
 Klingenbergstraße 16  
 D-32758 Detmold  
 Germany  
 Fon: +49 5231 14-0  
 Fax: +49 5231 14-292083  
 www.weidmueller.com

**Technische Daten**

**Test certificates**

Certificate No. (GERMLLOYD)	44536-07	Certificate No. (MARITREG)	09.04040.250
Certificate no. (cULus)	E197061		

**Product information**

Descriptive text ordering data	The colours of painted enclosures may vary under certain circumstances. **Delivery time available on request.
Descriptive text technical data	The mounting rails are designed to be installed directly. Assembly with terminals provides for 10 mm clearance to the ends of the mounting rail. Ordering recommendations: TS 35 mounting rail (screw-type terminals) WDU 2.5 1020000000 / (tension clamp terminals) ZDU 2.5 1608510000 *For fitting the enclosures with terminal blocks, please refer to the Terminal block catalogue or the SAK series. We recommend BK 6 or BK 6 CRN (0625220000) for horizontal installations. There are no pre-defined mounting points set within this enclosure for installing internal equipment in a horizontal position.
Descriptive text accessories	Sets also contain the mounting material, if required. 1 hinge per longitudinal side

**Approvals**

Approvals



ROHS Conform

**K  
KLIPPON K4**

**Weidmüller Interface GmbH & Co. KG**  
Klingenbergstraße 16  
D-32758 Detmold  
Germany  
Fon: +49 5231 14-0  
Fax: +49 5231 14-292083  
www.weidmueller.com

**Zeichnungen**