

GT1040/45/50/55

Graphic Operation Terminals

Versatile operator terminals
at a reasonable price



Bright, high-resolution QVGA displays for very good readability



Touch screen operation for intuitive operation and ease of use



Efficient and quick programming with GT Designer2 software



Built-in USB port for fast and easy data exchange

Full graphic displays for versatile applications



Can filling plant controlled by Mitsubishi GOTs

Small size, big functionality

The graphical operator terminals of the GT1050/1055 and GT1040/1045 series can help you to cut your costs and enhance the performance of your systems. They combine simple operation with powerful performance and small space requirements. Machine operation sequences are clearly comprehensible on the configurable display, ensuring that operators can easily understand the situation and respond quickly.



High resolution LCD and up to 50 touch keys per screen offer outstanding user flexibility.

Flexible and affordable

With the operator terminals GT1050/1055 and GT1040/1045 Mitsubishi Electric offers flexible HMI solutions to export-oriented machine builders that produce small to medium sized machines in high quantities. Typical fields of applications for the GT10 products are machines in the printing, textile, packaging and food industry as well as handling/cutting machines, air conditioning and ventilation applications and special purpose machines.

In addition, the flexibility of the GT10 models can be extended to universal applications, where end-users are not always factory workers, like for example hospitals, public facilities, airports or museums.

In addition to the powerful standard diagnostics and maintenance functions which are already integrated and can be used for troubleshooting without an extra PC, these operator terminals also support user-programmable graphical images.

You can store up to 32767 user-defined images, that can be displayed interchangeably on the LC screen using an overlay function.

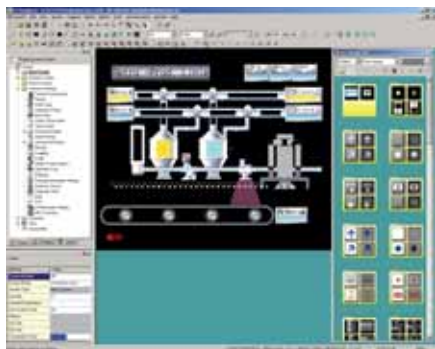


Graphical images for intuitive operation

High performance design

■ Easy programming

The units can be programmed with the GT Designer2 programming software, which runs on standard PCs under Windows®. User programs that are created this way, can be transferred via the integrated USB port and stored in the operator terminals ROM memory.



GT Designer2 has a comprehensive graphic library.

■ High resolution touch screen

The bright liquid crystal display offers very good readability and applicability in a variety of display applications. Thanks to the high screen resolution a clear graphical presentation of machine data with high information density is guaranteed. The touch screen provides an intuitive and easy-to-use operation interface – even for untrained people.

■ Intelligent functionality

Recipe management, innovative alarming and messaging are included as standard. Alarm information can be displayed as scrolling alarm messages in the actual screen or on a separate screen as an alarm history with integrated detailed help for the operator.

A multilevel security protection is implemented as well as graphical trending, energy-saving functions and time scheduling functions.

High speed response to touch operations is guaranteed due to the fast processing speed of the internal processor.

Ease of use

■ Easy screen design

Thanks to the touch panel design, touch keys can be quickly created and placed in any position with 1 pixel accuracy.

■ Alarm handling with multi-language support

Easy troubleshooting and additional background information in case of machine problems in up to 10 different languages are possible.

■ Online language switching

The here introduced terminals support different operators with their own native language in the HMI project. The GOTs can switch between comment sets each containing text in a different language allowing manufacturers to use one standard GOT setup in many countries.

Alarm functions also fully support online language switching.



Online language switching

■ Unicode 2.1 support

Using Unicode 2.1 enables the GOTs to display characters for languages from many countries of the world. This makes it easier for manufacturers to localize their machine control.

■ Versatile mounting

Both horizontal and vertical mounting is available to meet the needs of different applications.

■ Improved user-friendliness and flexibility

A data transfer memory board GT10-50FMB provides a convenient way to download project data and operating systems to the terminal without the need of a PC. This increases speed and efficiency when data is downloaded to multiple units.

Flexible communications possibilities

The GT1050/1055 and GT1040/1045 offer a wide range of communications support from different ports and connections to protocols and target devices. This enables efficient and fast programming and makes data access faster and work more effective.



FX/Q/QnA/A CPU

■ More connectable equipment

Built in RS232 and RS422 interfaces enable the GOTs to connect to many device types.

■ USB programming

The integrated USB port allows these GOTs to be programmed and monitored 20 times faster than using a traditional RS232 connection.

Mitsubishi PLCs, inverters or servo amplifiers can be programmed and monitored with the USB Transparent mode.

■ Multi-unit connection for high cost performance

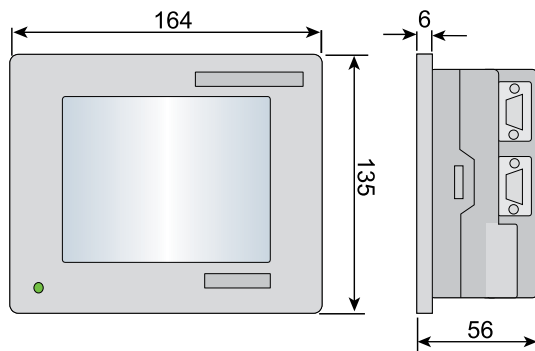
Two operator terminals can be connected to a single PLC by daisy chaining the GOT units together.

■ Communication driver

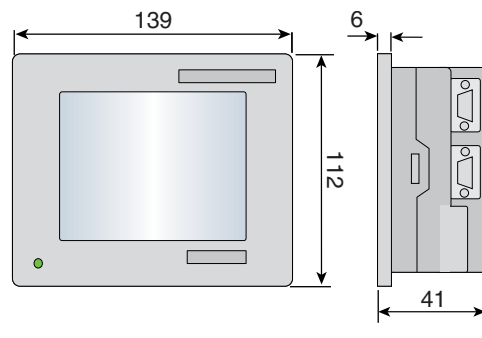
FX series PLC drivers are installed as standard but can be replaced using GT Designer2 for other drivers allowing connection to devices such as Mitsubishi Q series or third party products.

Specifications ///

Model	GT1055-QSBD	GT1045-QSBD	GT1050-QBBD	GT1040-QBBD
Display type	STN type color liquid crystal (with backlight)		STN type monochrome liquid crystal (with backlight)	
Display size (mm)	115 (width) x 86 (height)	96 (width) x 72 (height)	115 (width) x 86 (height)	96 (width) x 72 (height)
Display diagonal	5.7"	4.7"	5.7"	4.7"
Resolution	320 x 240 (QVGA)		320 x 240 (QVGA)	
Colors	256 colors		16 white/blue scales	
View angle (degrees)	55° leftward and rightward, 65° upward and 70° downward		45° leftward and rightward, 20° upward and 40° downward	
Brightness	380 cd/m ²	150 cd/m ²	260 cd/m ²	300 cd/m ²
Input type	Touch screen (matrix type, 16 x 16 dots)			
Number of touch points	50 per screen maximum (matrix configuration 20 x 15)			
User memory	Built-in Flash ROM (3 MB)			
Communication ports	1 x RS232, 1 x RS422, 1 x USB (12 Mbps)			
Buzzer	Buzzer sound issued when touch key is pressed (sound length adjustable)			
Battery	Built-in backup battery for clock data, alarm history and recipe data			
Power supply	24 V DC (+10 %, -15 %)			
Power consumption	9.84 W or less (410 mA/24 V DC)	3.6 W or less (150 mA/24 V DC)	9.36 W or less (390 mA/24 V DC)	3.6 W or less (150 mA/24 V DC)
Protection	IP67f			
Ambient temperature	0 to 50 °C			
Weight (kg)	0.7	0.45	0.7	0.45
Programming Software (optional)	GT Designer2 (for screen data programming)			



GOT1050/1055



GOT1040/1045

All dimensions in mm

EUROPEAN BRANCHES

MITSUBISHI ELECTRIC EUROPE B.V. CZECH REPUBLIC Radlická 714/113a CZ-158 00 Praha 5 Phone: +420 (0)251 551 470	MITSUBISHI ELECTRIC EUROPE B.V. FRANCE 25, Boulevard des Bouvets F-92741 Nanterre Cedex Phone: +33 (0)1 55 68 55 68	MITSUBISHI ELECTRIC EUROPE B.V. GERMANY Gothaer Straße 8 D-40880 Ratingen Phone: +49 (0)2102 / 486-0	MITSUBISHI ELECTRIC EUROPE B.V. IRELAND Westgate Business Park, Ballymount IRL-Dublin 24 Phone: +353 (0)1 4198800	MITSUBISHI ELECTRIC EUROPE B.V. ITALY Viale Colleoni 7 I-20041 Agrate Brianza (MI) Phone: +39 039 / 60 53 1	MITSUBISHI ELECTRIC EUROPE B.V. SPAIN Carretera de Rubi 76-80 E-08190 Sant Cugat del Vallés (Barcelona) Phone: 902 131121 // +34 935653131	MITSUBISHI ELECTRIC EUROPE B.V. UK Travellers Lane UK-Hatfield, Herts. AL10 8XB Phone: +44 (0)1707 / 27 61 00
---	---	--	---	---	--	---

EUROPEAN REPRESENTATIVES

GEVA AUSTRIA Wiener Straße 89 AT-2500 Baden Phone: +43 (0)2252 / 85 55 20	B:TECH A.S. CZECH REPUBLIC U Borové 69 CZ-58001 Havlíčkův Brod Phone: +371 (0)784 / 2280	Beijer Electronics SIA LATVIA Vestienas iela 2 LV-1035 Riga Phone: +371 (0)784 / 2280	MPL Technology Sp. z o.o. POLAND Ul. Krakowska 50 PL-32-083 Balice Phone: +48 (0)12 / 630 47 00	Beijer Electronics AB SWEDEN Box 426 SE-20124 Malmö Phone: +46 (0)40 / 35 86 00	ILAN & GAVISH Ltd. ISRAEL 24 Shenkar St., Kiryat Arie IL-49001 Peta'h-Tiqva Phone: +972 (0)3 / 922 18 24
TEHNIKON BELARUS Oktjabrskaya 16/5, Off. 703-711 BY-220030 Minsk Phone: +375 (0)17 / 210 46 26	Beijer Electronics A/S DENMARK Lykkegårdsvej 17, 1. DK-4000 Roskilde Phone: +45 (0)46 / 75 76 66	Beijer Electronics UAB LITHUANIA Savanoriu Pr. 187 LT-02300 Vilnius Phone: +370 (0)5 / 232 3101	Sirius Trading & Services ROMANIA Aleea Lacul Morii Nr. 3 RO-060841 Bucuresti, Sector 6 Phone: +40 (0)21 / 430 40 06	Econotec AG SWITZERLAND Hinterdorfstr. 12 CH-8309 Nürensdorf Phone: +41 (0)44 / 838 48 11	CEG INTERNATIONAL LEBANON Cebaco Center/Block A Autostrade DORA Lebanon - Beirut Phone: +961 (0)1 / 240 430
Koning & Hartman b.v. BELGIUM Woluwelaan 31 BE-1800 Vilvoorde Phone: +32 (0)2 / 257 02 40	Beijer Electronics Eesti OÜ ESTONIA Pärnu mnt. 160i EE-11317 Tallinn Phone: +358 (0)207 / 463 500	ALFATRADE Ltd. MALTA 99, Paola Hill Malta- Paola PLA 1702 Phone: +356 (0)21 / 697 816	Craft Con. & Engineering d.o.o. SERBIA Bulevar Svetog Cara Konstantina 80-86 SER-18106 Nis Phone: +381 (0)18 / 292-24-4/5	GTS TURKEY Bayraktar Bulvarı Nutuk Sok. No:5 TR-34775 Yukari ISTANBUL Phone: +90 (0)216 526 39 90	CBI Ltd. SOUTH AFRICA Private Bag 2016 ZA-1600 Isando Phone: +27 (0)11 / 928 2000
INEA BH d.o.o. BOSNIA AND HERZEG. Aleja Lipa 56 BA-71000 Sarajevo Phone: +387 (0)33 / 921 164	Beijer Electronics OY FINLAND Jaakonkatu 2 FIN-01620 Vantaa Phone: +358 (0)9 / 463 500	INTEHISIS srl MOLDOVA bld. Traian 23/1 MD-2060 Kishinev Phone: +358 (0)22 / 66 4242	INEA SR d.o.o. SERBIA Izletnicka 10 SER-113000 Smederevo Phone: +381 (0)26 / 617 163	CSC Automation Ltd. UKRAINE 4-B, M. Raskovoyi St. UA-02660 Kiev Phone: +380 (0)44 / 494 33 55	
AKHNATON BULGARIA 4 Andrej Ljapchev Blvd. Pp 21 BG-1756 Sofia Phone: +359 (0)2 / 817 6004	UTEKO A.B.E.E. GREECE S, Mavrogenous Str. GR-18542 Piraeus Phone: +30 211 / 1206 900	HIFLEX AUTOM. B.V. NETHERLANDS Wolweverstraat 22 NL-2984 CD Ridderkerk Phone: +31 (0)180 - 46 60 04	AutoCont Control s.r.o. SLOVAKIA Radlinského 47 SK-02601 Dolny Kubin Phone: +421 (0)43 / 5868210		
INEA CR d.o.o. CROATIA Losinjaska 4 a HR-10000 Zagreb Phone: +385 (0)1 / 36 940- 01/- 02/- 03	MELTRADE Ltd. HUNGARY Fertő utca 14. HU-1107 Budapest Phone: +36 (0)1 / 431-9726	Koning & Hartman b.v. NETHERLANDS Haarlerbergweg 21-23 NL-1101 CH Amsterdam Phone: +31 (0)20 / 587 76 00	CS MTrade Slovensko, s.r.o. SLOVAKIA Vajanského 58 SK-92101 Piestany Phone: +421 (0)33 / 7742 760		
AutoCont C.S. s.r.o. CZECH REPUBLIC Technologická 374/6 CZ-708 00 Ostrava-Pustkovec Phone: +420 595 691 150	KAZPPROMAUTOM. Ltd. KAZAKHSTAN Mustafina Str. 7/2 KAZ-470046 Karaganda Phone: +7 7212 / 50 11 50	Beijer Electronics AS NORWAY Postboks 487 NO-3002 Drammen Phone: +47 (0)32 / 24 30 00	INEA d.o.o. SLOVENIA Stegne 11 SI-1000 Ljubljana Phone: +386 (0)1 / 513 8100		