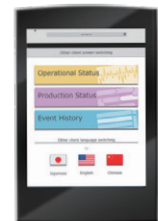
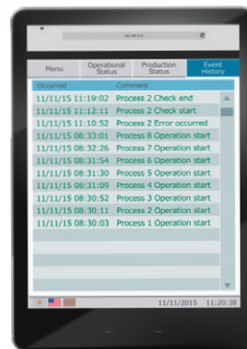


GOT Smart Web-based Remote Solutions

GOT *Mobile*

Monitor your worksite anytime, anywhere.



The GOT Mobile function offers remote equipment monitoring.

NEWS The wireless LAN communication function supports access point mode.

You can use your wireless LAN communication unit as an access point by configuring simple settings in screen design software*.

The GOT and mobile devices can communicate directly without using a separate access point. * GT Works3 Version 1.144A or later

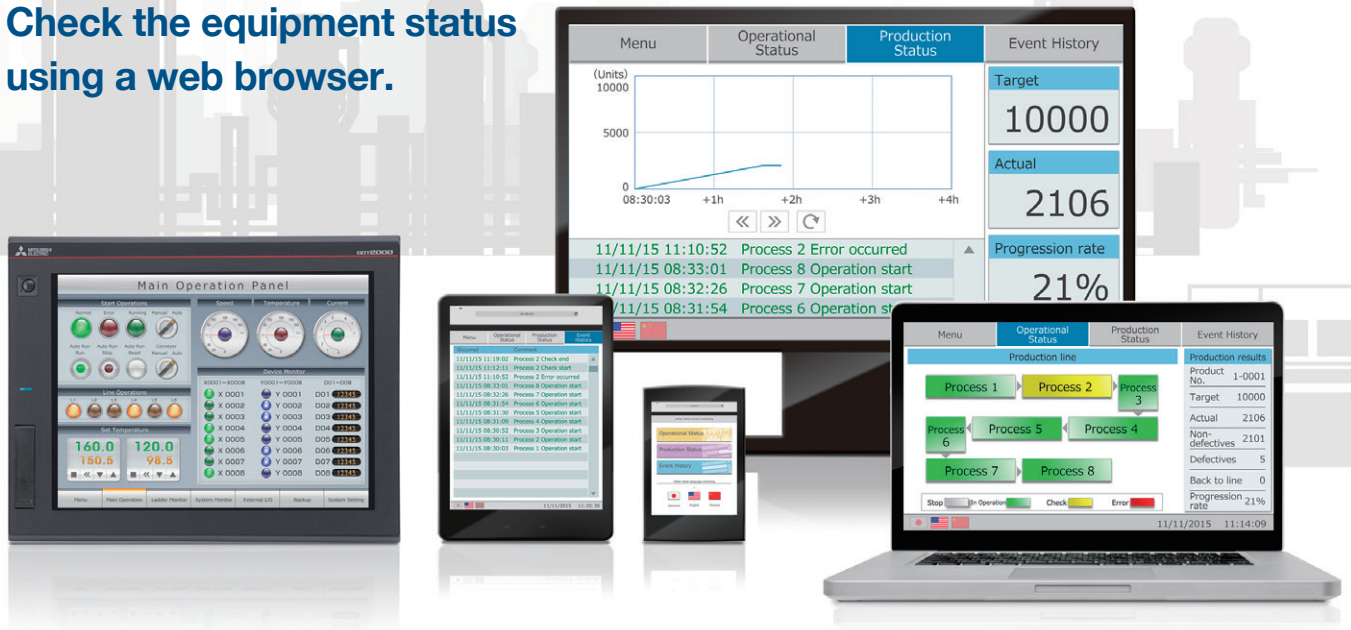


Wireless LAN communication unit GT25-WLAN

GOT Mobile

Monitor your worksite anytime, anywhere.

Check the equipment status using a web browser.



The GOT Mobile function improves visualization accessibility and reduces total cost of own

Improve productivity

Monitor production from outside of the clean room

The status of equipment can be monitored using tablets from outside of the clean room.

Production site



Monitoring connected devices on a tablet via GOT

Reduce downtime

Monitor production remotely

The status of equipment can be monitored remotely with your smartphone. In addition, you can view maintenance manuals to quickly check error details and find solutions.

Production site



An error is occurring in process 2. How do I deal with it?



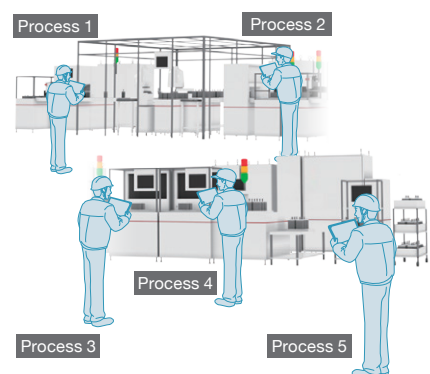
Alarm monitoring screen

Improve setup procedure

Monitor production by multiple operators

When the equipment is large, up to five operators can efficiently work at the same time to check and make settings.

Production site

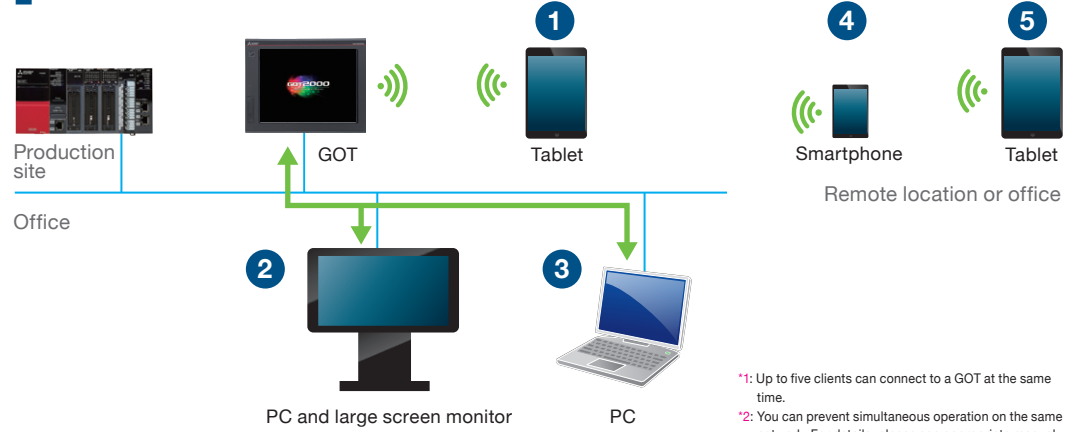


Each operator can efficiently check a different screen.

GOT Mobile Features

Five information devices can access a GOT at the same time.*1

Each information device can display and operate a different screen.*2

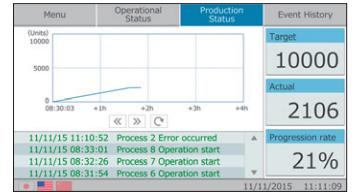
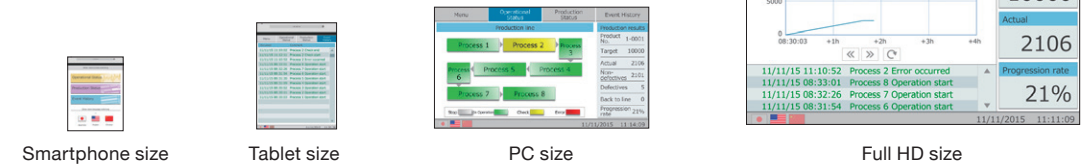


*1: Up to five clients can connect to a GOT at the same time.

*2: You can prevent simultaneous operation on the same network. For details, please see appropriate manual.

Easily change screen sizes depending on used device.

You can design screens easily using the GOT screen design software, GT Works3.



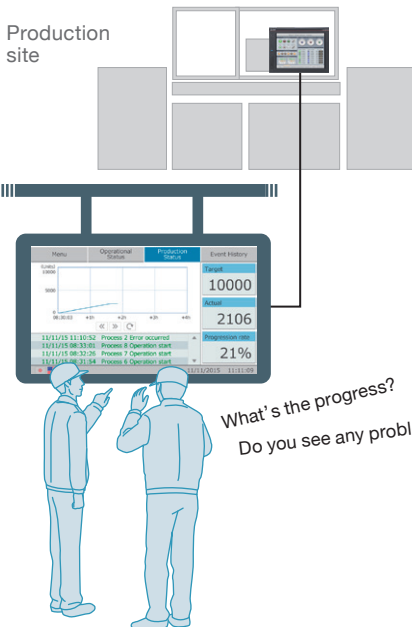
Partnership... Mitsubishi FA Integrated Solution



Increase production rate

Monitor production on a large screen

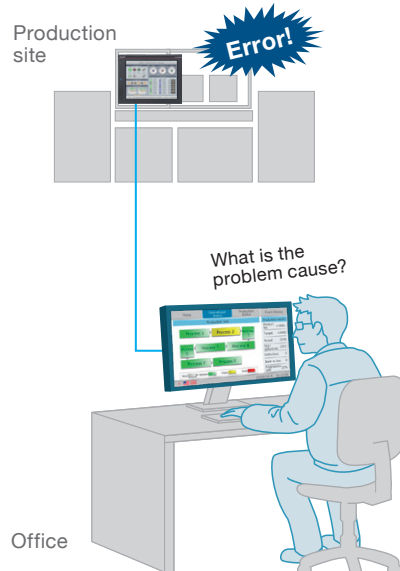
The function visualizes your production site by showing the production targets and results on a large Andon screen.



Improve maintenance

Monitor production from your office

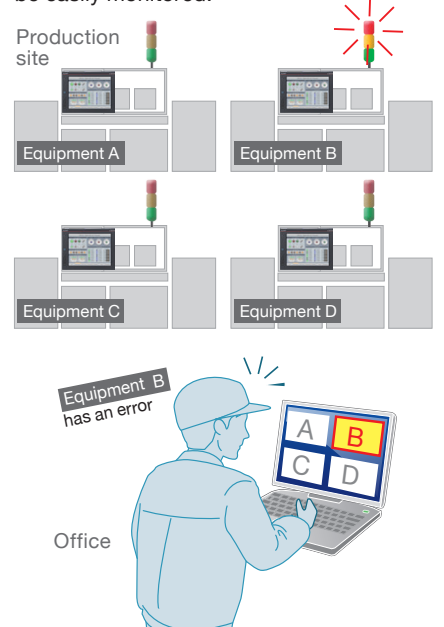
The status of equipment can be monitored on your PC via GOT on the production site.



Improve maintenance

Monitor production with one PC

One PC can be connected to several GOTs to check the condition of equipment. Even large-scale systems can be easily monitored.



GOT Smart Web-based Remote Solutions

System configuration

GOT (HMI)
GT27/GT25



+ Wireless LAN communication unit

1. Install the wireless LAN communication unit
2. Register the GOT Mobile function license



Tablets, mobile terminals, PCs

Browser requirements:

- Google Chrome for Android version 43 or later
- Google Chrome for Windows version 43 or later
- Safari for iOS 8.0 or later

* For details, please see Technical Bulletin No. GOT-A-0090.

1. Wireless LAN communication unit (GT25-WLAN)

This unit allows you to connect tablets, mobile terminals and PCs to the GOT through a wireless LAN.

Connect your mobile devices simply to GOT via wireless LAN communication unit*.

* GT Works3 Version 1.144A supports the access point mode setting. Up to five stations can be connected to the access point.

2. GOT Mobile function license (GT25-WEBSKEY)

This license is required to use the GOT Mobile function. The function allows you to monitor and operate connected devices from tablets, mobile terminals, and PCs using web browsers.

Specifications

Classification		Model	Screen size	Display section Display color	Panel color	Power	Remarks
GT27	GT2715	GT2715-XTBA	15" XGA	TFT color 65536 colors	Black	100 to 240 V AC	Multimedia & Video/RGB compatible Multi-touch compatible
		GT2715-XTBD				24 V DC	
	GT2712	GT2712-STBA	12.1" SVGA		Black	100 to 240 V AC	
		GT2712-STBD				24 V DC	
		GT2712-STWA			White	100 to 240 V AC	
		GT2712-STWD				24 V DC	
	GT2710	GT2710-STBA	10.4" SVGA		Black	100 to 240 V AC	
		GT2710-STBD				24 V DC	
		GT2710-VTBA	10.4" VGA		Black	100 to 240 V AC	
		GT2710-VTBD				24 V DC	
		GT2710-VTWA			White	100 to 240 V AC	
		GT2710-VTWD				24 V DC	
	GT2708	GT2708-STBA	8.4" SVGA		Black	100 to 240 V AC	
		GT2708-STBD				24 V DC	
GT2708-VTBA		8.4" VGA	Black	100 to 240 V AC			
GT2708-VTBD				24 V DC			
GT2705	GT2705-VTBD	5.7" VGA	Black	24 V DC	Multi-touch compatible		
GT25	GT2512	GT2512-STBA	12.1" SVGA	TFT color 65536 colors	Black	100 to 240 V AC	-
		GT2512-STBD				24 V DC	
	GT2510	GT2510-VTBA	10.4" VGA		Black	100 to 240 V AC	
		GT2510-VTBD				24 V DC	
		GT2510-VTWA			White	100 to 240 V AC	
		GT2510-VTWD				24 V DC	
	GT2508	GT2508-VTBA	8.4" VGA		Black	100 to 240 V AC	
		GT2508-VTBD				24 V DC	
		GT2508-VTWA			White	100 to 240 V AC	
		GT2508-VTWD				24 V DC	

Communication unit/License

Product name	Model	Specifications
Wireless LAN communication unit	GT25-WLAN	IEEE802.11b/g/n compliant, built-in antenna, wireless LAN access point (base station)*1, station (client), connection to personal computer, tablet, smartphone. Compliance with: Japan Radio Law*2, FCC*3, R&TTE*3
GOT Mobile function license*4	GT25-WEBSKEY	1 license

*1: When the wireless LAN configuration of GT Designer3 [Operation Mode] is set to [Access Point], the maximum connection number is five (recommended).

*2: The product with hardware version A complies with the regulation. The product with hardware version A can be used only in Japan.

*3: The product with hardware version B complies with the regulation. The product with hardware version B or later can be used in Japan, the United States, the EU member states, Switzerland, Norway, Iceland, and Liechtenstein.

*4: 1 license is required for 1 GOT unit.

Precautions for safe use

- To use the products given in this document, always read the related manuals before starting to use them.
- If the GOT Mobile function is used to perform remote control of control equipment, the field operator may not notice the remote control, possibly leading to an accident.
- In addition, a communication delay or interruption may occur depending on the network environment, and remote control of control equipment cannot be performed normally in some cases.
- Before using the above functions to perform remote control, fully grasp the circumstances of the field site and ensure safety.

Trademarks and registered trademarks

- Windows is a registered trademark or trademark of Microsoft Corporation in the United States, Japan and other countries.
- Android and Google Chrome are trademarks or registered trademarks of Google Inc.
- iOS is a trademark or registered trademark of Cisco in the U.S. and other countries and is used under license.
- Safari is a trademark of Apple Inc., registered in the U.S. and other countries.
- All products and company names used herein are either trademarks or registered trademarks of their respective owners.

The release date varies depending on the product and your region. For details, please contact your local sales office.

The actual color may differ slightly from the pictures in this catalog. The actual display may differ from what are shown on GOT screen images.

MITSUBISHI ELECTRIC CORPORATION

HEAD OFFICE: TOKYO BLDG., 2-7-3, MARUNOUCHI, CHIYODA-KU, TOKYO 100-8310, JAPAN
NAGOYA WORKS: 1-14, YADA-MINAMI 5, HIGASHI-KU, NAGOYA, JAPAN

Country/Region Sales office
USA+1-847-478-2100
Mexico+52-55-3067-7511
Brazil+55-11-4689-3000
China+86-21-2322-3030
Taiwan+886-2-2299-2499
Korea+82-2-3660-9530

Singapore+65-6473-2308
Thailand+66-2682-6522 to 31
Indonesia+62-21-3192-6461
Vietnam+84-8-3910-5945
India+91-20-2710-2000
Australia+61-2-9684-7777

Germany+49-2102-486-0
UK+44-1707-28-8780
Italy+39-039-60531
Spain+34-935-65-3131
France+33-1-55-68-55-68
Czech+420-251-551-470

Turkey+90-216-526-3990
Poland+48-12-347-65-00
Russia+7-812-633-3497
South Africa+27-11-658-8100