

# Timer and switching relays

## Multi-function *flare* TIMER-S

# interface

Multi-function timer relay

- ON-delay
- One shot
- OFF start – flashing
- ON start – flashing
- OFF-delay
- Time range 0.1 sec – 300 sec



Dimensions (mm): W x H x D  
6.2 x 89 x 70

**flare** TIMER-S  
**Multi-function timer relay**  
Approvals:

Time range	Type	Part No.	Std. Pack
<b>0.1 – 300 sec, spring clamp connection</b>	flare-TIMER-S-250250V6A	81.020.4100.0	10
<b>Coil circuit</b>			
Operating voltage	24 V DC + 25%/-20%		
Control voltage	24 V DC + 25%/-20%		
Nominal current	ca. 10 mA		
Time setting	At the front (behind the hinged marking tag carrier)		
Setting of function	DIP switch S1–S5/potentiometer		
Status display	LED green		
Repeatability	± 1% of selected range		
<b>Switching behavior</b>			
Max. switching voltage	250 V AC / 300 V DC		
Max. switching current	6 A AC / 2 A DC		
Max. switching capacity	1500 VA / 48 W		
Max. starting current	10 A; 4 sec.		
ON/OFF delay	1 ms / 5 ms		
Chatter time	2 ms		
Max. switching frequency	20 Hz		
Contact material	AgSnO <sub>2</sub>		
Min. selectable voltage	12 V		
Min. selectable current	8 mA		
Mechanical life	2 x 10 <sup>7</sup>		
Electrical life 24 V DC / 2 A	6 x 10 <sup>5</sup>		
Electrical life 230 V AC / 6 A	8 x 10 <sup>4</sup>		
Rated voltage			
Isolation voltage of input/output	4 kV <sub>eff.</sub>		
Overtoltage category	III (according to HD 625.1S1)		
Degree of pollution	2 (according to HD 625.1S1)		
Ambient temperature	0 °C...+50 °C		
Storage temperature	–40 °C...+80 °C		
Protection type/mounting rail	IP 20 / TS35		
Standards/specifications	VDE 0160; VDE 0106 T101		
Emitted interference/interference immunity	EN 61000-6-3; EN 61000-6-2		
Wire range of screw terminals	–		
Wire range of spring clamp terminals			
fine-stranded	0.14 mm <sup>2</sup> – 1.5 mm <sup>2</sup>		
solid	0.5 mm <sup>2</sup> – 2.5 mm <sup>2</sup>		
CSA EX	Class I, Division 2, Groups A, B, C and D		
<b>Accessories</b>			
Pluggable jumper (U <sub>max.</sub> = 50 V, I <sub>max.</sub> = 2 A)		Z8.000.0200.8	10
8 digit marking tag, unmarked, 60 pcs.		Z4.242.5153.0	10

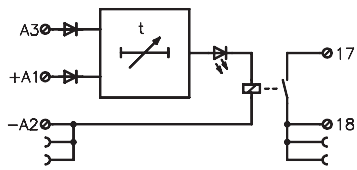
# Timer and switching relays

## Multi-function *flare* TIMER-S

# interface

### Wiring diagram for multi-function timer relay *flare* TIMER-S

#### Multi-function



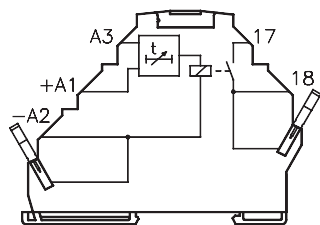
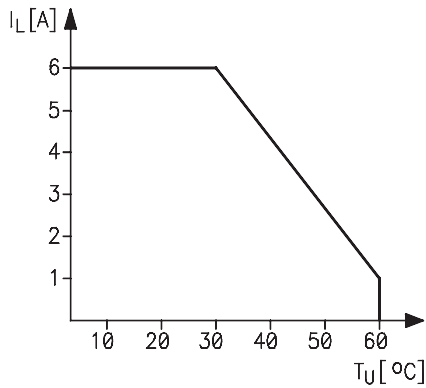
#### Setting the type of function

Function	DIP switch		
	1	2	3
ON-delay	ON	ON	ON
One shot	ON	OFF	ON
ON start, flashing	ON	ON	OFF
OFF start, flashing	ON	OFF	OFF
OFF-delay	OFF	OFF	OFF

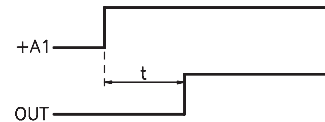
#### Setting the time ranges

Timer range $\pm 20\%$		DIP switch	
t min	t max	4	5
0.1	1.2 sec	OFF	ON
0.4	5 sec	ON	OFF
3.5	40 sec	ON	ON
30	300 sec	OFF	OFF

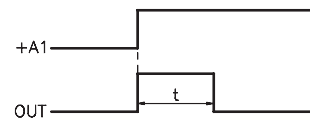
#### Derating: timer relays



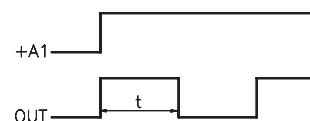
Contact assignment: timer relay



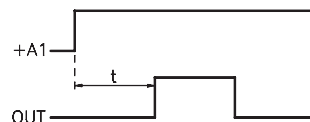
ON-delay



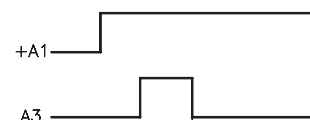
One shot



ON start, flashing



OFF start, flashing



OFF-delay