

400/690 V contact inserts, screw connection

Contact inserts *revos* BASIC



3-pole + 2 switching contacts + ground, Size 10



6-pole + 2 switching contacts + ground, Size 16



10-pole + 2 switching contacts + ground, Size 24



16-pole + 2 switching contacts + ground, Size 24



20-pole + 4 switching contacts + ground, Size 48



26-pole + 4 switching contacts + ground, Size 48



32-pole + 4 switching contacts + ground, Size 48



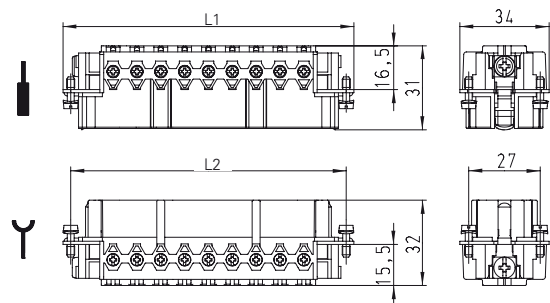
| Description | Type | Part No. | P.U. |
|---|-------------------|---------------|------|
| Contact inserts <i>revos</i> BASIC 400/690 V | | | |
| 3-pole + ground | | | |
| Male insert | BAS STS 3 2.5 64 | 70.410.0340.0 | 10 |
| Female insert | BAS BUS 3 2.5 64 | 70.400.0340.0 | 10 |
| Contact inserts <i>revos</i> BASIC 400/690 V | | | |
| 6-pole + ground | | | |
| Male insert | BAS STS 6 2.5 64 | 70.410.0640.0 | 10 |
| Female insert | BAS BUS 6 2.5 64 | 70.400.0640.0 | 10 |
| Contact inserts <i>revos</i> BASIC 400/690 V | | | |
| 10-pole + ground | | | |
| Male insert | BAS STS 10 2.5 64 | 70.410.1040.0 | 10 |
| Female insert | BAS BUS 10 2.5 64 | 70.400.1040.0 | 10 |
| Contact inserts <i>revos</i> BASIC 400/690 V | | | |
| 16-pole + ground | | | |
| Male insert | BAS STS 16 2.5 64 | 70.410.1640.0 | 10 |
| Female insert | BAS BUS 16 2.5 64 | 70.400.1640.0 | 10 |
| Contact inserts <i>revos</i> BASIC 400/690 V | | | |
| 20-pole + ground | | | |
| Male insert | BAS STS 20 2.5 64 | 70.410.2040.0 | 5 |
| Female insert | BAS BUS 20 2.5 64 | 70.400.2040.0 | 5 |
| Contact inserts <i>revos</i> BASIC 400/690 V | | | |
| 26-pole + ground | | | |
| Male insert | BAS STS 26 2.5 64 | 70.410.2640.0 | 5 |
| Female insert | BAS BUS 26 2.5 64 | 70.400.2640.0 | 5 |
| Contact inserts <i>revos</i> BASIC 400/690 V | | | |
| 32-pole + ground | | | |
| Male insert | BAS STS 32 2.5 64 | 70.410.3240.0 | 5 |
| Female insert | BAS BUS 32 2.5 64 | 70.400.3240.0 | 5 |

| Technical data | |
|-----------------------------------|---------------------------|
| Rated voltage | L-PE 400 V / L-L 690 V |
| Rated voltage according to UL/CSA | 600 V |
| Rated impulse voltage | 6 kV |
| Rated current | 16 A |
| Degree of pollution | 3 |
| Rated cross section | |
| EN 60999 | 0.5 – 2.5 mm ² |
| UL | 20 – 12 AWG |
| CSA | 20 – 12 AWG |
| Contacts | |
| Material | Copper alloy |
| Surface | Sn |
| Insulation strip length | 7 mm |
| Contact resistance | ≤ 1.5 mΩ |
| Mating cycles | 200 |
| Screws | |
| head design / recomm. torque | |
| Mounting screws | H1 / 0.5 – 0.7 Nm |
| Clamping screws | H1 / 0.5 – 0.7 Nm |
| Ground conductor screws | H2 / 1.2 – 1.6 Nm |
| Temperature range | -40 – +120 °C |

| Housing 690 V | | |
|---------------|----|--------------|
| Housing Size | 10 | Page 150–159 |
| Housing Size | 16 | Page 178–187 |
| Housing Size | 24 | Page 206–215 |
| Housing Size | 48 | Page 218–221 |

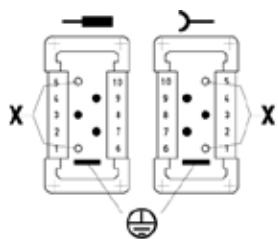
Dimensions

3-pole + ground – 32-pole + ground

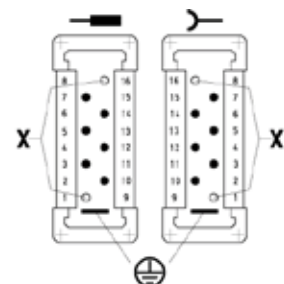


| Number of poles | L1 [mm] | L2 [mm] |
|-----------------|---------|---------|
| 3 | 63.0 | 57.0 |
| 6 | 83.0 | 77.5 |
| 10 | 110.0 | 104.0 |
| 16 | 110.0 | 104.0 |
| 20 | 110.0 | 104.0 |
| 26 | 110.0 | 104.0 |
| 32 | 110.0 | 104.0 |

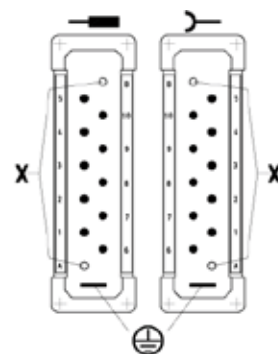
3-pole + ground



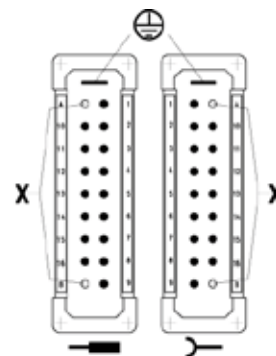
6-pole + ground



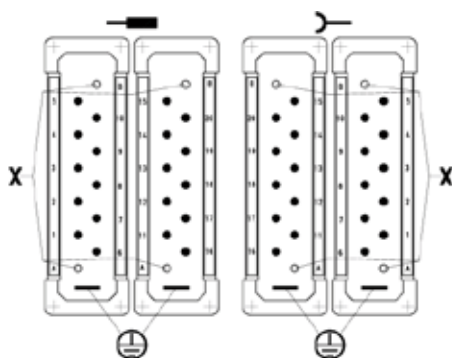
10-pole + ground



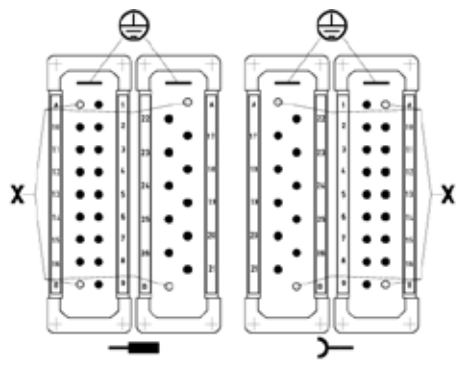
16-pole + ground



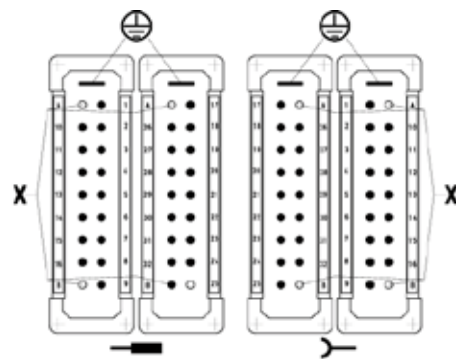
20-pole + ground



26-pole + ground



32-pole + ground



X = shortened switching contacts