

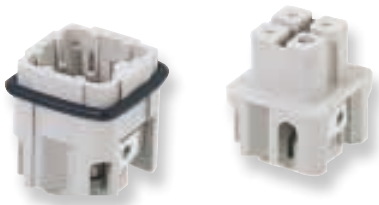


Contact inserts

Contact inserts *revos* MINI



3-pole + ground



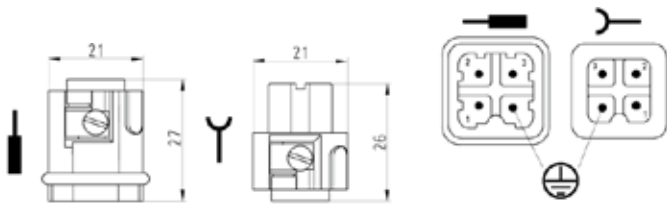
4-pole + ground



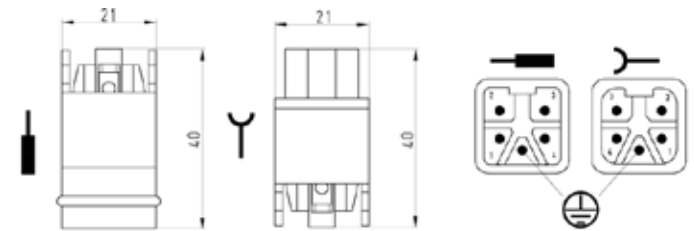
| Description | Type | Part No. | P.U. |
|--|---|------------------------|------------------------|
| Contact inserts <i>revos</i> MINI | | | |
| Male insert | 3-pole + ground MIN STS 3 2.5 40 | 73.310.0353.0 | 10 |
| Female insert | MIN BUS 3 2.5 40 | 73.300.0353.0 | 10 |
| Contact inserts <i>revos</i> MINI | | | |
| Male insert | 4-pole + ground MIN STS 4 2.5 40 AG | 73.310.0453.0 | 10 |
| Female insert | MIN BUS 4 2.5 40 AG | 73.300.0453.0 | 10 |
| Technical data | | | |
| Rated voltage | | 3-pole + ground | 4-pole + ground |
| Installed in a plastic housing | 400 V | | |
| Installed in a metal housing | L-PE 250 V / L-L 400 V | 400 V | |
| Rated voltage according to UL/CSA | 600 V | | |
| Rated impulse voltage | | | |
| Plastic housing | 4 kV | | |
| Metal housing | 4 kV | | |
| Rated current | 10 A | | |
| Degree of pollution | 3 | | |
| Rated cross section | | | |
| EN 60999 | 0.5 – 2.5 mm ² | | |
| UL | 18 – 16 AWG | 22 – 12 AWG | |
| CSA | 22 – 12 AWG | | |
| Contacts | | | |
| Material | Copper alloy | | |
| Surface | Sn | Ag | |
| Insulation strip length | 4 mm | | |
| Contact resistance | ≤ 2 mΩ | ≤ 1.5 mΩ | |
| Mating cycles | 50 | 200 | |
| Screws head design / recomm. torque | | | |
| Mounting screws | M3 / 0.5 – 0.7 Nm | | |
| Clamping screws | M3 / 0.5 – 0.7 Nm | | |
| Ground conductor screws | M3 / 0.5 – 0.7 Nm | | |
| Temperature range | -40 – +120 °C | | |
| Housing <i>revos</i> MINI | | | Page 118–119 |

Dimensions

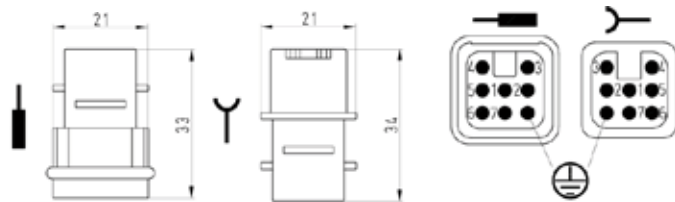
3-pole + ground



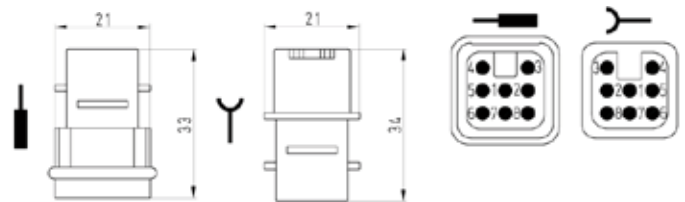
4-pole + ground

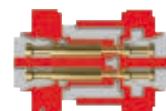


7-pole + ground



8-pole





Contact inserts

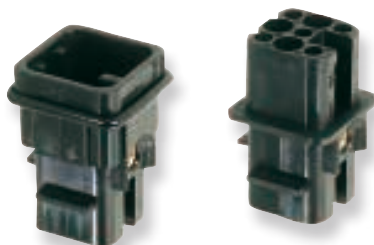
Contact inserts *revos* MINI



7-pole + ground



8-pole



| Description | Type | Part No. | P.U. |
|--|---------------------------|------------------------|---------------|
| Contact inserts <i>revos</i> MINI | | | |
| 7-pole + ground | | | |
| Male insert without crimp contacts | MIN STC 7 25 | 73.710.0753.0 | 10 |
| Female insert without crimp contacts | MIN BUC 7 25 | 73.700.0753.0 | 10 |
| Contact inserts <i>revos</i> MINI | | | |
| 8-pole | | | |
| Male insert without crimp contacts | MIN STC 8 05 | 73.710.0853.0 | 10 |
| Female insert without crimp contacts | MIN BUC 8 05 | 73.700.0853.0 | 10 |
| Contacts for crimp version | | | |
| | mm ² / AWG | | |
| Male reel contacts, Sn | 0.2 – 0.56 / 24-20 | 05.544.0900.0 | 5000 |
| Female reel contacts, Sn | 0.2 – 0.56 / 24-20 | 02.124.0900.0 | 5000 |
| Male reel contacts, Sn | 0.75 – 1.5 / 18-16 | 05.544.1000.0 | 5000 |
| Female reel contacts, Sn | 0.75 – 1.5 / 18-16 | 02.124.1000.0 | 5000 |
| Male single contacts, Sn | 0.2 – 0.56 / 24-20 | 05.544.0929.0 | 200 |
| Female single contacts, Sn | 0.2 – 0.56 / 24-20 | 02.124.0929.0 | 200 |
| Male single contacts, Sn | 0.75 – 1.5 / 18-16 | 05.544.1029.0 | 200 |
| Female single contacts, Sn | 0.75 – 1.5 / 18-16 | 02.124.1029.0 | 200 |
| Male reel contacts, Au | 0.5 – 1.5 / 20-16 | 05.544.1400.0 | 5000 |
| Female reel contacts, Au | 0.5 – 1.5 / 20-16 | 02.124.1400.0 | 5000 |
| Male single contacts, Au | 0.5 – 1.5 / 20-16 | 05.544.1429.0 | 200 |
| Female single contacts, Au | 0.5 – 1.5 / 20-16 | 02.124.1429.0 | 200 |
| Technical data | | 7-pole + ground | 8-pole |
| Rated voltage | | | |
| Installed in a plastic housing | 250 V | 50 V | |
| Installed in a metal housing | 50 V | 50 V | |
| Rated voltage according to UL/CSA | 600 V | 42 V | |
| Rated impulse voltage | | | |
| Plastic housing | 4 kV | 0.8 kV | |
| Metal housing | 0.8 kV | | |
| Rated current | 10 A | | |
| Degree of pollution | 3 | | |
| Rated cross section | | | |
| EN 60999 | 0.2 – 1.5 mm ² | | |
| UL | 18 – 16 AWG | | |
| CSA | 24 – 16 AWG | | |
| Contacts | | | |
| Material | Copper alloy | | |
| Surface | Au or SN | | |
| Insulation strip length | 4 mm | | |
| Contact resistance | 4 mΩ | | |
| Mating cycles | Sn 50 / Au 500 | | |
| Screws head design / recomb. torque | | | |
| Mounting screws | M3 / 0.5 – 0.7 Nm | | |
| Clamping screws | - | | |
| Ground conductor screws | - | | |
| Temperature range | -40 – +120 °C | | |
| Description | Type | Part No. | P.U. |
| Accessories | | | |
| Crimping tool | | 95.101.0800.0 | 1 |
| Crimping die | "E" | 05.502.2400.0 | 1 |
| Contact positioner | "2" | 05.502.3200.0 | 1 |
| Extraction tool | | 05.502.0000.0 | 1 |
| Housing <i>revos</i> MINI | | Page 118–119 | |

Derating curve according to IEC 60512 sec. 3

revos MINI
10 A / 2.5 mm² / 1.5 mm²

- 3-pole
- 4-pole
- 7-pole
- 8-pole

