

690 V Hoods, double locking lever Size 16

690 V Hoods Size 16



Lateral cable entry



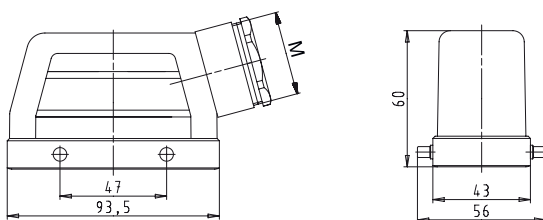
Top cable entry



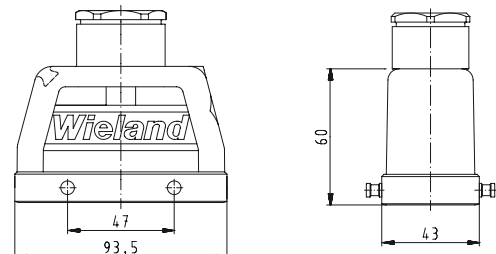
Description	Type	M	Part No.	P.U.
690 V Hoods, size 16				
Lateral cable entry M25				
with cable gland, IP54, $\rightarrow \varnothing $ 7.5 – 19 mm	BAS GOT GA 16 M25 69 A0	25	72.350.1635.0	1
with threaded collar	BAS GOT GA 16 M25 69 A1	25	72.350.1635.1	1
with intermediate support	BAS GOT GA 16 M25 69 A2	25	72.350.1635.2	1
with strain relief, IP54	BAS GOT GA 16 M25 69 A3	25	72.350.1635.3	1
Lateral cable entry M32				
with cable gland, IP54, $\rightarrow \varnothing $ 15 – 26.5 mm	BAS GOT GA 16 M32 69 A0	32	72.353.1635.0	1
with threaded collar	BAS GOT GA 16 M32 69 A1	32	72.353.1635.1	1
with intermediate support	BAS GOT GA 16 M32 69 A2	32	72.353.1635.2	1
with strain relief, IP54	BAS GOT GA 16 M32 69 A3	32	72.353.1635.3	1
Top cable entry M25				
with cable gland, IP54, $\rightarrow \varnothing $ 7.5 – 19 mm	BAS GOT GC 16 M25 69 A0	25	72.352.1635.0	1
with threaded collar	BAS GOT GC 16 M25 69 A1	25	72.352.1635.1	1
with intermediate support	BAS GOT GC 16 M25 69 A2	25	72.352.1635.2	1
with strain relief, IP54	BAS GOT GC 16 M25 69 A3	25	72.352.1635.3	1
Top cable entry M32				
with cable gland, IP54, $\rightarrow \varnothing $ 15 – 26.5 mm	BAS GOT GC 16 M32 69 A0	32	72.354.1635.0	1
with threaded collar	BAS GOT GC 16 M32 69 A1	32	72.354.1635.1	1
with intermediate support	BAS GOT GC 16 M32 69 A2	32	72.354.1635.2	1
with strain relief, IP54	BAS GOT GC 16 M32 69 A3	32	72.354.1635.3	1
Technical data				
Material metal/plastic	Die cast aluminum alloy			
Surface	silicon-free			
Locking levers at Multipole connectors	-			
Gasket at Multipole connectors	-			
Degree of protection				
with latched locking levers	IP54			
with appropriate cable glands	IP65			
Temperature range	-40 – +120 °C			
Description	Type	M	Part No.	P.U.
Accessories				
Cable gland IP68, plastic material, gray	Connection range 7 – 16 mm	25	Z5.507.1553.0	10
Cable gland IP68, nickel-plated brass	Connection range 11 – 18 mm	25	Z5.507.1521.0	10
Cable gland IP68, plastic material, gray	Connection range 10 – 21 mm	32	Z5.507.1753.0	10
Cable gland IP68, nickel-plated brass	Connection range 15 – 21 mm	32	Z5.507.1721.0	10
Contact inserts				
See the product matrix			Page 24–25	

Dimensions

Lateral cable entry



Top cable entry



Note:

In 2013 the design and order numbers of the revos housings will change, but the function of the housings will remain intact. In addition, a new flexible marking system will be available to you. In the transition phase you can continue to order with the existing part number. You can find more detailed information and a cross-reference list in our e-Shop and on our homepage.