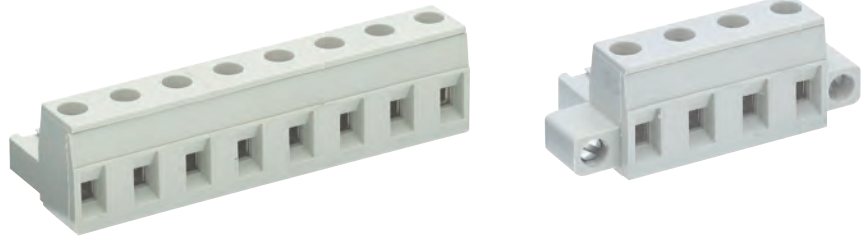


Pluggable PCB terminals series 8313 / 8413, rising cage clamp system

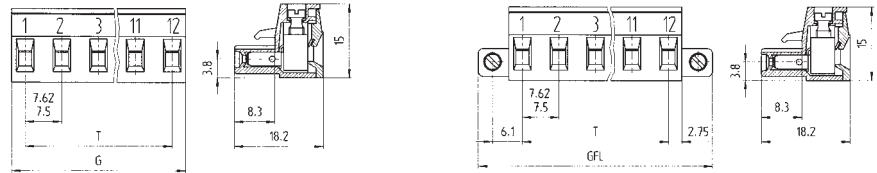
pitch 7.50 / 7.62 mm

IEC	400 V 4kV cat.3 690 V 4kV cat.2 1000 V 4kV cat.1	12 A	0.14 - 2.5 mm ² (Stranded) 0.14 - 2.5 mm ² (Solid)
UL	300 V	15 A	22 - 12 AWG
CSA	300 V	15 A	22 - 12 AWG
Wire Strip Length	6.0 mm		
Screw Size	M3		



See Technical Data section for screw material options

Approvals:



series 8313 B/B F pitch 7.50 mm

Box Qty	G	T	Pole
100	13.00	7.50	2
100	20.50	15.00	3
50	28.00	22.50	4
50	35.50	30.00	5
50	43.00	37.50	6
50	50.50	45.00	7
50	58.00	52.50	8
50	65.50	60.00	9
50	73.00	67.50	10
50	80.50	75.00	11
50	88.00	82.50	12

unmarked

marked

unmarked
with screw flange

marked
with screw flange

Part Number	Part Number	Part Number	Part Number
25.360.3253.0	25.360.0253.0	25.324.2253.0	25.324.0253.0
25.360.3353.0	25.360.0353.0	25.324.2353.0	25.324.0353.0
25.360.3453.0	25.360.0453.0	25.324.2453.0	25.324.0453.0
25.360.3553.0	25.360.0553.0	25.324.2553.0	25.324.0553.0
25.360.3653.0	25.360.0653.0	25.324.2653.0	25.324.0653.0
25.360.3753.0	25.360.0753.0	25.324.2753.0	25.324.0753.0
25.360.3853.0	25.360.0853.0	25.324.2853.0	25.324.0853.0
25.360.3953.0	25.360.0953.0	25.324.2953.0	25.324.0953.0
25.360.4053.0	25.360.1053.0	25.324.3053.0	25.324.1053.0
25.360.4153.0	25.360.1153.0	25.324.3153.0	25.324.1153.0
25.360.4253.0	25.360.1253.0	25.324.3253.0	25.324.1253.0

series 8413 B/B F pitch 7.62 mm

Box Qty	G	T	Pole
100	13.12	7.62	2
100	20.74	15.24	3
50	28.36	22.86	4
50	35.98	30.48	5
50	43.60	38.10	6
50	51.22	45.72	7
50	58.84	53.34	8
50	66.46	60.96	9
50	74.08	68.58	10
50	81.70	76.20	11
50	89.32	83.82	12

unmarked

marked

unmarked
with screw flange

marked
with screw flange

Part Number	Part Number	Part Number	Part Number
25.380.3253.0	25.380.0253.0	25.324.6253.0	25.324.4253.0
25.380.3353.0	25.380.0353.0	25.324.6353.0	25.324.4353.0
25.380.3453.0	25.380.0453.0	25.324.6453.0	25.324.4453.0
25.380.3553.0	25.380.0553.0	25.324.6553.0	25.324.4553.0
25.380.3653.0	25.380.0653.0	25.324.6653.0	25.324.4653.0
25.380.3753.0	25.380.0753.0	25.324.6753.0	25.324.4753.0
25.380.3853.0	25.380.0853.0	25.324.6853.0	25.324.4853.0
25.380.3953.0	25.380.0953.0	25.324.6953.0	25.324.4953.0
25.380.4053.0	25.380.1053.0	25.324.7053.0	25.324.5053.0
25.380.4153.0	25.380.1153.0	25.324.7153.0	25.324.5153.0
25.380.4253.0	25.380.1253.0	25.324.7253.0	25.324.5253.0