



## Cooling systems for electrical and electronic enclosures



All products available in RAL 7035 & RAL 7032. Other colours available on request.

## SKY COOLING UNITS FOR SIDE OR DOOR MOUNTING (INDOOR)

Part Number	Cooling Capacity (W)	Dimensions (mm)	Power Supply
	EN814 - A35A35	Width x Height x Depth	(Voltage)
SKY10	1050	400 x 950 x 233	(230 1~50-60) (115 1~50-60) (400/440 2~50-60)
SKY15	1550	400 x 950 x 233	(230 1~50-60) (115 1~50-60) (400/440 2~50-60)
SKY20	2050	400 x 1265 x 236	(230 1~50-60) (115 1~50-60) (400 3~50-60)

All SKY units have an Electronic Thermostat fitted as standard.



## EGO COOLING UNITS FOR SIDE OR DOOR MOUNTING (INDOOR)

Part Number	Cooling Capacity (W)	Dimensions (mm)	Power Supply
	EN814 - A35A35	Width x Height x Depth	(Voltage)
EGOS3	300	525 x 340 x 135	(230 1~50-60)
EGO04	380	285 x 460 x 180	(230 1~50-60) (115 1~50-60)
EGO06	640	316 x 606 x 212	(230 1~50-60) (115 1~50-60) (400/440 2~50-60)
EGO08	820	348 x 783 x 215	(230 1~50-60) (115 1~50-60) (400/440 2~50-60)
EGO10	1000	348 x 783 x 215	(230 1~50-60) (115 1~50-60) (400/440 2~50-60)
EGO12	1250	405 x 999 x 237	(230 1~50-60) (115 1~50-60) (400/440 2~50-60)
EGO16	1600	405 x 999 x 237	(230 1~50-60) (115 1~50-60) (400/440 2~50-60)
EGO20	2000	405 x 999 x 237	(230 1~50-60) (115 1~50-60) (400 3~50-60)
EGO30	2900	500 x 1270 x 336	(230 1~50-60) (400 3~50-60)
EGO40	3850	500 x 1270 x 336	(230 1~50-60) (400 3~50-60)
EGO60	5800/6050	600 x 2000 x 380	(400 3~50) (460 3~60)
EGO80	7600/7950	800 x 2000 x 380	(400 3~50) (460 3~60)
EGOA0	9400/9850	800 x 2000 x 380	(400 3~50) (460 3~60)

All EGO units have an Electronic Thermostat fitted as standard.



## EMO COOLING UNITS FOR SIDE OR DOOR MOUNTING (OUTDOOR)

Part Number	Cooling Capacity (W)	Dimensions (mm)	Power Supply
	EN814 - A35A35	Width x Height x Depth	(Voltage)
EMO04	380	285 x 460 x 180	(230 1~50-60) (115 1~50-60)
EMO06	640	316 x 606 x 212	(230 1~50-60) (115 1~50-60) (400/440 2~50-60)
EMO08	820	348 x 783 x 215	(230 1~50-60) (115 1~50-60) (400/440 2~50-60)
EMO10	1000	348 x 783 x 215	(230 1~50-60) (115 1~50-60) (400/440 2~50-60)
EMO12	1250	405 x 999 x 237	(230 1~50-60) (115 1~50-60) (400/440 2~50-60)
EMO16	1600	405 x 999 x 237	(230 1~50-60) (115 1~50-60) (400/440 2~50-60)
EMO20	2000	405 x 999 x 237	(230 1~50-60) (115 1~50-60) (400 3~50-60)
EMO30	2900	500 x 1270 x 336	(230 1~50-60) (400 3~50-60)
EMO40	3850	500 x 1270 x 336	(230 1~50-60) (400 3~50-60)
EMO60	5800/6050	600 x 2000 x 380	(400 3~50) (460 3~60)
EMO80	7600/7950	800 x 2000 x 380	(400 3~50) (460 3~60)
EMOA0	9400/9850	800 x 2000 x 380	(400 3~50) (460 3~60)

All EMO units have a Mechanical Thermostat fitted as standard.



MORE INFORMATION AVAILABLE ON: [www.texaclimatecontrol.com](http://www.texaclimatecontrol.com)

All products available in RAL 7035 & RAL 7032. Other colours available on request.

## DEK COOLING UNITS FOR ROOF MOUNTING (INDOOR)

Part Number	Cooling Capacity (W) EN814 - A35A35	Dimensions (mm) Width x Height x Depth	Power Supply (Voltage)
DEK04	410	259 x 264 x 486	(230 1~50-60) (115 1~50-60)
DEK08	820	340 x 340 x 600	(230 1~50-60) (115 1~50-60) (400/440 2~50-60)
DEK12	1150	401 x 415 x 567	(230 1~50-60) (115 1~50-60) (400/440 2~50-60)
DEK15	1550	401 x 415 x 567	(230 1~50-60) (115 1~50-60) (400/440 2~50-60)
DEK20	2050	401 x 415 x 567	(230 1~50-60) (115 1~50-60) (400 3~50-60)
DEK30	2900	492 x 496 x 797	(230 1~50-60) (400 3~50-60)
DEK40	3850	492 x 496 x 797	(230 1~50-60) (400 3~50-60)



All DEK units have an Electronic Thermostat fitted as standard.

## BLU-BIT AIR WATER HEAT EXCHANGERS

Part Number	Cooling Capacity (W) EN814 - W10A35	Dimensions (mm) Width x Height x Depth	Power Supply (Voltage)
BIT25	2500	400 x 270 x 542	(230 1~50-60) (115 1~50-60)
BLU10	1000	310 x 450 x 115	(230 1~50-60) (115 1~50-60)
BLU18	1750	398 x 901 x 137	(230 1~50-60) (115 1~50-60)
BLU25	2500	398 x 901 x 137	(230 1~50-60) (115 1~50-60)
BLU35	3500	398 x 1148 x 163	(230 1~50-60) (115 1~50-60)
BLU45	4500	398 x 1148 x 163	(230 1~50-60) (115 1~50-60)
BLU60	6000	450 x 1500 x 163	(230 1~50-60) (115 1~50-60) (400/440 2~50-60)
BLUA0	10000	797 x 1932 x 206	(230 1~50-60) (400/440 2~50-60)
BLUA5	15000	797 x 1932 x 206	(230 1~50-60) (400/440 2~50-60)



## MIX AIR - AIR HEAT EXCHANGERS

Part Number	Specific Cooling Power W/K	Dimensions (mm) Width x Height x Depth	Power Supply (Voltage)
MIX14	14	188 x 363 x 165	(230 1~50-60) (115 1~50-60)
MIX36	36	316 x 771 x 93	(230 1~50-60) (115 1~50-60)
MIX50	50	316 x 771 x 93	(230 1~50-60) (115 1~50-60)
MIX80	80	317 x 1260 x 108	(230 1~50-60) (115 1~50-60)



## DLK - DLR ROOF MOUNT FANS

Part Number	Free Air Flow Rate Cubic Metres Per Hour	Dimensions (mm) Width x Height x Depth	Power Supply (Voltage)
DLR19		375 x 106 x 375	
DLK19	600	375 x 106 x 375	(230 1~50-60) (115 1~50-60)
DLK22	1050	375 x 106 x 375	(230 1~50-60) (115 1~50-60)
DLK42	2300	637 x 315 x 637	(230 1~50-60)
DLK45	3000	637 x 315 x 637	(230 1~50-60)
DLK48	4000	637 x 315 x 637	(230 1~50-60)



MORE INFORMATION AVAILABLE ON: [www.texaclimatecontrol.com](http://www.texaclimatecontrol.com)

## FAN FILTER FANS

Part Number	Air Flow Rate	Dimensions (mm)	Power Supply
	Cubic Metres Per Hour	Width x Height x Depth	(Voltage)
FAN08	23/30	105 x 105 x 54 Cut-out 92 x 92	(230 1~50-60) (115 1~50-60) (12VDC) (24VDC) (48VDC)
FAN12	57/61	150 x 150 x 67 Cut-out 125 x 125	(230 1~50-60) (115 1~50-60) (24VAC 50~60) (12VDC) (24VDC) (48VDC)
FAN23	115/125	250 x 250 x 102 Cut-out 219 x 219	(230 1~50-60) (115 1~50-60) (24VAC 50~60) (12VDC) (24VDC) (48VDC)
FAN25	230/262	250 x 250 x 114 Cut-out 219 x 219	(230 1~50-60) (115 1~50-60) (12VDC) (24VDC) (48VDC)
FAN28	400/440	250 x 250 x 98 Cut-out 219 x 219	(230 1~50-60) (115 1~50-60) (400/440 3~50-60)
FAN35	520/580	325 x 325 x 153 Cut-out 292 x 292	(230 1~50-60) (115 1~50-60) (400/440 3~50-60)
FAN39	920/940	325 x 325 x 118 Cut-out 292 x 292	(230 1~50-60) (115 1~50-60)
FAN39T	965/980	325 x 325 x 118 Cut-out 292 x 292	(230 1~50-60) (115 1~50-60)

All Filter Fans available in RAL 7035 & RAL 7032.



## FIL EXHAUST FILTERS

Part Number		Dimensions (mm)	Used In
		Width x Height x Depth	Conjunction With
FIL08		105 x 105 x 20	FAN08 Range
FIL12		150 x 150 x 24	FAN12 Range
FIL25		250 x 250 x 26	FAN23/FAN25/FAN28 Range
FIL35		325 x 325 x 28	FAN35/FAN39 Range
FIL35T		325 x 325 x 28	FAN39T Range

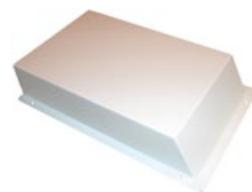
All Exhaust Filters available in RAL 7035 & RAL 7032. Cut outs as above.



## IP55FC IP55 FAN COWLS

Part Number		Dimensions (mm)	Used In
		Width x Height x Depth	Conjunction With
IP55FC12		275 x 182 x 53	FAN12/FIL12 Range
IP55FC25		458 x 282 x 75	FAN25/FIL25 Range
IP55FC35		531 x 358 x 97	FAN35/FAN39/FIL35 Range

All IP55 Fan Cowls available in RAL 7035 & RAL 7032 & Stainless Steel.



## NOT - NCT THERMOSTATS

Part Number	Type	Dimensions (mm)	Used In
		Width x Height x Depth	Conjunction With
NOT	Normally Open Thermostat	33 x 65 x 43	FAN Range/DLK Range/MIX Range
NCT	Normally Closed Thermostat	33 x 65 x 43	Heaters



## BLIZZARD ANTI-CONDENSATION HEATERS

Part Number		Dimensions (mm)	Used in
		Width x Height x Depth	Conjunction With
HEAT20W	20 Watt Heater	35 x 97.5 x 57	NCT
HEAT30W	30 Watt Heater	35 x 157.5 x 57	NCT
HEAT40W	40 Watt Heater	35 x 97.5 x 57	NCT
HEAT65W	65 Watt Heater	35 x 157.5 x 57	NCT
HEAT100W	100 Watt Heater	70 x 176 x 25	NCT



All information could be subjected to modifications without any previous notice.