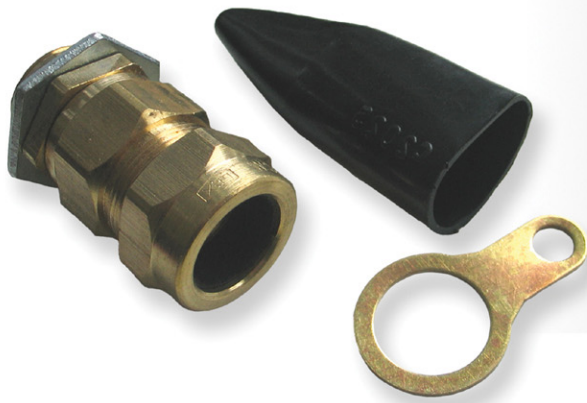


Cable Glands



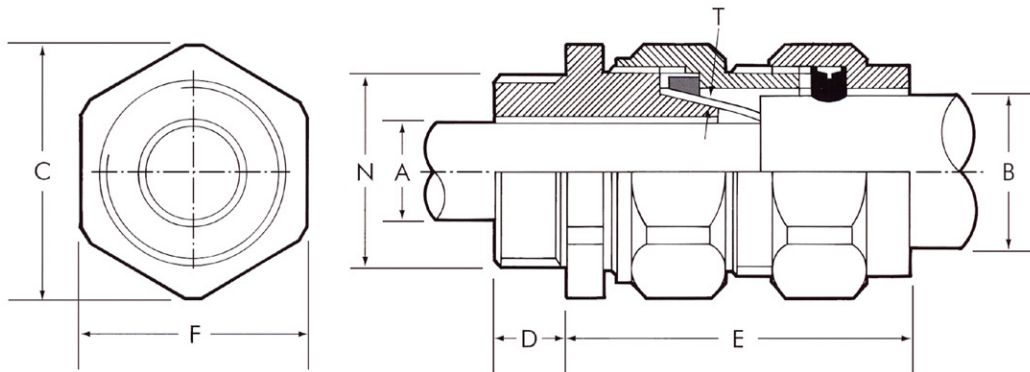
PEX CW Commercial Brass Cable Glands

Application: Brass indoor and outdoor gland suitable for all types of steel wire armoured cable (SWA), providing an environmental seal on the outer cable sheath. The gland also provides mechanical cable retention and electrical continuity via armour wire termination.

Operating Temperature (standard seals): -20°C to +80°C

Ingress Protection: IP66

Standard: BS 6121 Part 1:2005



Part No.	Pack Quantity	Entry Thread		Cable Acceptance Details			Hexagonal Details				Assembled Length
		Diameter N	Length D	Diameter A min max	Diameter B min max	Armour Wire Size T	Body & Back Nut A/F F	A/C C	Compression Nut A/F J	A/C K	
PCW20S PACK	2	20	10	8.0 - 11.8	12.9 - 15.8	0.90/1.25	23.0	25.6	24.0	26.7	38.0
PCW20 PACK	2	20	10	11.0 - 13.8	15.5 - 20.5	0.90/1.25	26.0	28.9	28.0	31.1	39.0
PCW25 PACK	2	25	10	13.0 - 20.0	20.3 - 27.0	1.25/1.60	34.0	37.7	35.5	39.5	45.0
PCW32 PACK	2	32	10	19.0 - 26.4	26.7 - 33.5	1.60/2.00	42.0	46.8	46.0	51.2	48.0
PCW40 PACK	1	40	15	25.0 - 32.4	33.0 - 40.1	1.60/2.00	50.0	55.7	55.0	61.0	53.0
PCW50 PACK	1	50	15	37.0 - 44.2	46.0 - 52.6	2.00/2.50	62.0	69.1	65.0	72.1	59.0
PCW63 PACK	1	63	15	48.0 - 56.2	58.4 - 65.3	2.50	76.0	84.7	80.0	88.8	66.0

All dimensions are in mm.

Pack content: Gland(s), steel locknut(s), earth tag(s) and shroud(s).

LSF packs available on request - suffix part number with '-LSF'

Packs available with the new EarthingNut - suffix part number with '-EN'



See page 55 for more information on Earthing Nuts