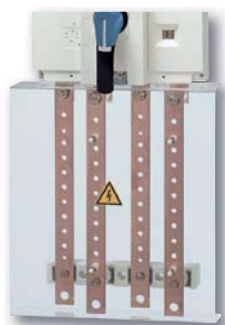




# Distribution blocks

## Distribution

repar\_020\_c\_1\_cat



Distribution blocks for SOCOMEC disconnection devices

repar\_008\_a\_1\_cat



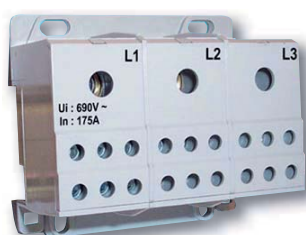
Unipolar distribution blocks

repar\_042\_a



Row distribution blocks

repar\_028\_a\_1\_cat



Multipolar distribution blocks

### The solution for

- Electrical distribution.



### Conformity to standards

- IEC 60439-1
- EN 60439-1
- NF C 20455



## Function

SOCOME **distribution blocks** allow easy connection of conductors. They are installed downstream of a load break switch, a changeover switch or a fuse-combination switch.

## Characteristics

### General characteristics

- Insulation voltage:
  - ferrules terminal distribution block: 500 V,
  - modular row terminal distribution block: 690 V,
  - wire-terminal distribution block: 1000 V.
- Impulse voltage:
  - ferrules terminal distribution block: 6 kV,
  - modular row terminal distribution block: 6 kV,
  - wire-terminal distribution block: 8 kV.
- Self-extinguishing: 960 °C.

### Composition of the range

- 7 ratings from 80 to 360 A in 1, 2, 3 and 4 poles.
- 2 connection modes:
  - direct or ferrules,
  - cable lugs.

## Direct or cable connection

### Bridge multipolar distribution block

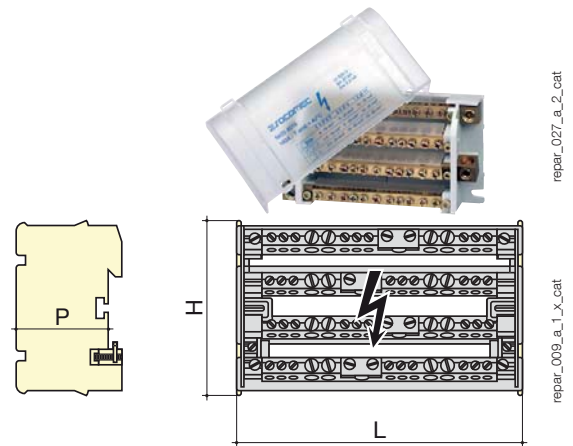
#### References

Rating (A)	No. of poles	No of feeders per section (mm <sup>2</sup> )	Dimensions H x W x D (mm)	I <sub>cc</sub> (kA rms) <sup>(1)</sup>	Reference
125	3/4 P	2x25 + 7x10	85 x 88 x 48	3	5420 4108
125	3/4 P	2x25 + 2x16 + 9x10	85 x 129 x 48	4.2	5420 4112
160	3/4 P	1x35 + 3x25 + 8x16 <sup>(2)</sup>	90 x 160.5 x 50	6.2	5420 4016

(1) Short circuit withstand (rms value) 1 second.  
 (2) Maximum section of flexible cable.

#### Dimensions

Rating (A)	H (mm)	W (mm)	D (mm)
125	98	74.5	45
175	80	71.5	42.5

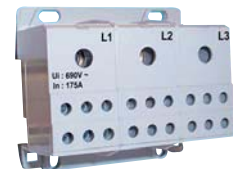


Direct or cable connection distribution blocks which can be clipped onto a symmetric DIN rail.

### Monoblock multipolar distribution block

#### References

Rating (A)	No. of poles	Dimensions H x W x D (mm)	Reference
125	4 P	98 x 74.5 x 45	5410 4112
175	3 P	80 x 71.5 x 42.5	5410 3017



### Unipolar distribution blocks

#### References

Rating (A)	Switch mounting N (mm)	I <sub>cc</sub> (kA rms)	Reference
80	56.5	1.9	5410 1008
125	65	4.4	5410 1012
175	60.5	11	5410 1017
250	86	21	5410 1025
400	86	21	5410 1040

Description of accessories	Reference
Connection for rating 250 A <sup>(1)</sup>	5410 0025
Connection for rating 400 A <sup>(1)</sup>	5410 0040

(1) Linking part enabling direct assembly on the connecting lugs of the switching device.

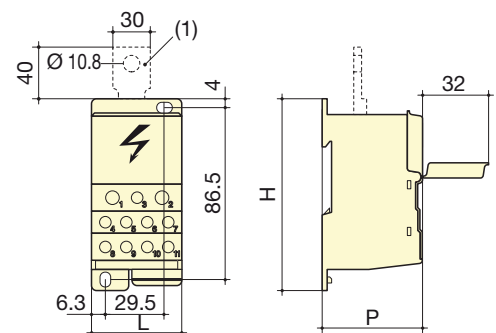
#### Dimensions

Rating (A)	Dimensions H x W x D (mm)	I <sub>cc</sub> (kA rms) <sup>(1)</sup>
80	66 x 27 x 47	1.9
125	74.5 x 27 x 46.5	4.4
175	71 x 45 x 43.5	11
250	96 x 45 x 50	21
400	96 x 45 x 50	21

(1) Short circuit withstand (rms value) 1 second.

#### Connections

Rating (A)	Power supply section (mm <sup>2</sup> )	No of phases per section (mm <sup>2</sup> )
80	< 16	4 x 6 + 2 x 16
125	< 35	6 x 2.5 to 16
175	16 ... 70	10 x 2.5 to 16
250	35 ... 120	2 x 25 + 5 x 16 + 4 x 10
400	95 ... 185	2 x 25 + 5 x 16 + 4 x 10
125	Phase: 5 x 1 to 6 + 2 x 1.5 to 10 / Neutral: 6 x 1.5 to 10 + 4 x 1.5 to 6	
175	6 x 2.5 to 16	



Direct or cable connection distribution blocks, IP20 which can be clipped onto a symmetric DIN rail.

### Earth bar

#### References

Mounting by	No of feeders per section (mm <sup>2</sup> )	Material	W (mm)	To be ordered in multiples of	Reference
2 self M4	10 x 16 + 2 x 35	brass	120	10	5414 0120
2 self M6	41 x 16 + 2 x 35	brass	470	10	5414 0470



# Distribution blocks

## Distribution

### Row distribution blocks

#### Row distribution block with IP20 connectors

##### References

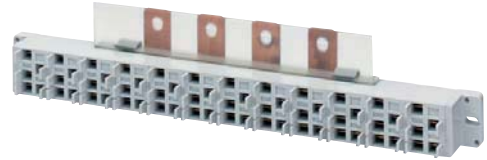
Rating (A)	Length	With connector leads <sup>(1)</sup>	Icc (kA rms)	Reference
250 <sup>(2)</sup>	1 row	yes	10	5420 2426
250 <sup>(2)</sup>	1 row	no	10	5421 2426

(1) Delivered with 6 mm<sup>2</sup> connector leads, L = 120 mm, 12 black connectors, 12 blue connectors.

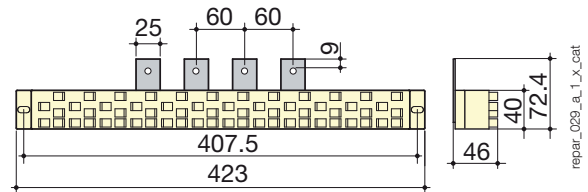
(2) Preferably the terminations will be distributed over the entire number of terminals.

##### Dimensions

Cables					
Rating (A)	Type	Length (mm)	Colour	To be ordered in multiples of	Reference
40	6 mm <sup>2</sup> cable	120	Blue	4	5421 1006
40	6 mm <sup>2</sup> cable	120	Black	10	5421 1016
40	6 mm <sup>2</sup> cable	320	Blue	10	5421 1106
40	6 mm <sup>2</sup> cable	320	Black	10	5421 1116
63	10 mm <sup>2</sup> cable	320	Blue	10	5421 1101
63	10 mm <sup>2</sup> cable	320	Black	10	5421 1111
40	2.5 mm <sup>2</sup> connector			20	5421 0025
63	6 mm <sup>2</sup> connector			20	5421 0125



repair\_028\_a\_2\_cat



repair\_009\_a\_1\_x\_cat

#### Row distribution block with screws

##### References

Rating (A)	Dimensions H x W x D (mm)	No of		Reference
		Phase	Neutral	
80	50 x 24 modules x 40	3 x 8	2 x 8	5420 2408
80	50 x 36 modules x 40	3 x 12	2 x 12	5420 3608

##### Adapter for cable up to 35 mm<sup>2</sup>

Cross-section (mm <sup>2</sup> )	To be ordered in multiples of	Reference
35	4	5420 0001



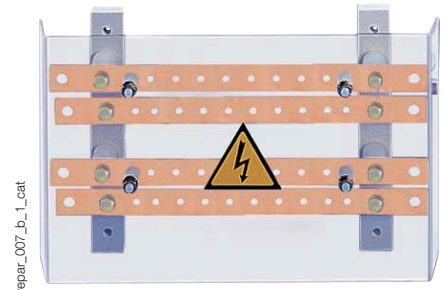
repair\_042\_a

## Terminal connections

### Multipolar distribution blocks

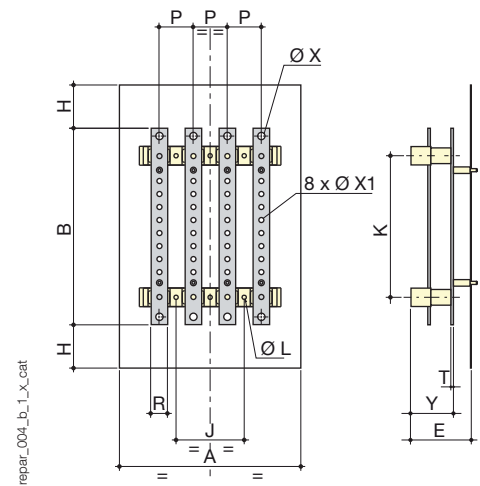
#### References

Rating (A)	No. of poles	Icc (kA rms)	No of feeders per section (mm <sup>2</sup> )	Reference
160	3 P	10	2 x 95 + 8 x 25	5412 3016
160	4 P	10	2 x 95 + 8 x 25	5412 4016
250	3 P	15	2 x 150 + 8 x 50	5412 3025
250	4 P	15	2 x 150 + 8 x 50	5412 4025
400	3 P	21	2 x 240 + 8 x 95	5412 3040
400	4 P	21	2 x 240 + 8 x 95	5412 4040
630	3 P	21	2 x 300 + 8 x 150	5412 3063
630	4 P	21	2 x 300 + 8 x 150	5412 4063



#### Dimensions

Rating (A)	No. of poles	A	B	E	H	J	K	ØL	P	R	T	ØX	ØX1	Y
160	3 P	154	286	73	46.5	122	207	6.5	36	20	4	9	6	54
160	4 P	190	286	73	46.5	158	207	6.5	36	20	4	9	6	54
250	3 P	210	307	83	57.5	50	222	7	50	25	4	11	8	56
250	4 P	260	307	83	57.5	100	222	7	50	25	4	11	8	56
400	3 P	281	375	116	82.5	65	270	8	65	32	5	14.5	8.5	82
400	4 P	346	375	116	82.5	130	270	8	65	32	5	14.5	8.5	82
630	3 P	271	438	117	90.5	65	333	8	65	40	6	14.5	10.5	83
630	4 P	346	438	117	90.5	130	333	8	65	40	6	14.5	10.5	83



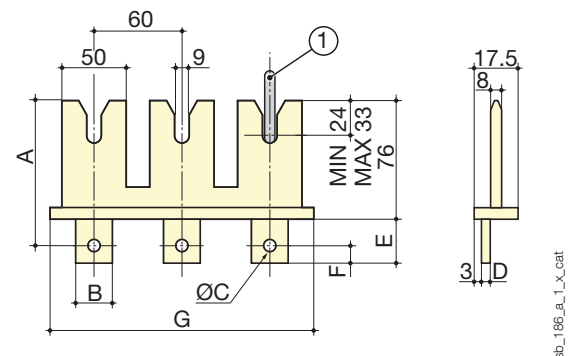
Terminal connections distribution blocks with front protection cover against direct contact.

### Plug-in unit for 5 to 6.3 mm bars

#### References

Rating (A)	No. of poles	Reference
125/160	3 P	3699 3P16
125/160	4 P	3699 3P16
250/400	3 P	3699 3P39
250/400	4 P	3699 6P39
630/800	3 P	3699 3P80
630/800	4 P	3699 6P80

Rating (A)	No. of poles	A	B	C	D	E	F	G
125/160	3 P	99	20	M8	3	23	10	186
125/160	4 P	99	20	M8	3	23	10	248
250/400	3 P	101.5	25	M10	4	28	12.5	186
250/400	4 P	101.5	25	M10	4	28	12.5	248
630/800	3 P	101.5	25	M10	4	28	12.5	186
630/800	4 P	101.5	25	M10	4	28	12.5	248



1. Dropper busbar with a thickness of 5 to 6.3 mm.

# Distribution blocks

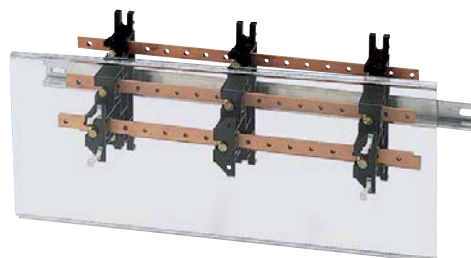
## Distribution

### Terminal connections (continued)

#### Stair type multipolar distribution blocks

##### References

Rating (A)	L (mm)	No. of poles	Icc (kA rms)	No. of supports	Distribution block	
					Reference	Protection cover
160	270	4 P	25	2	5028 0421	5028 0411
160	420	4 P	17	2	5028 0451	5028 0412
160	620	4 P	20	3	5028 0471	5028 0413
250	270	4 P	30	2	5028 0423	5028 0411
250	420	4 P	22	2	5028 0453	5028 0412
250	620	4 P	18	3	5028 0473	5028 0413
400	270	4 P	24	2	5028 0425	5028 0411
400	420	4 P	21	2	5028 0455	5028 0412
400	620	4 P	13	3	5028 0475	5028 0413

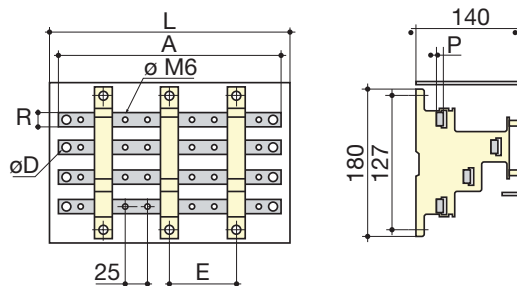


repair\_012\_b\_1\_cat

##### Dimensions

Type	Pack qty	Reference
Spacer for protection cover	1	5028 0415

Rating (A)	Nb of terminations	A	ØD	E	L	P	R
160	9	250	8	150	270	5	15
160	15	400	8	300	420	5	15
160	21	600	8	250	620	5	15
250	9	250	10	150	270	5	20
250	15	400	10	300	420	5	20
250	21	600	10	250	620	5	20
400	8	225	12	150	270	5	32
400	14	375	12	300	420	5	32
400	20	620	12	250	620	5	32



repair\_040\_a\_1\_x\_cat

Stair type distribution blocks with threaded holes. Can be clipped onto a symmetric DIN rail.  
Factory assembled and supplied without protection cover

#### Disconnectable solid neutral links

##### References

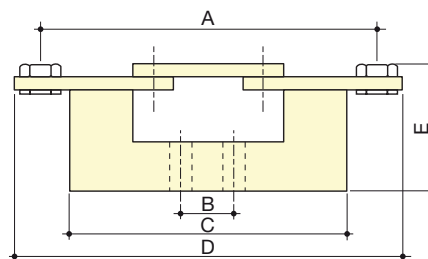
Rating (A)	Connection type	Reference
160	Terminal connections	NB16 0000
250	Terminal connections	NB16 0000
400	Terminal connections	NB40 0000
630	Terminal connections	NB63 0000



repair\_060\_a\_2\_cat

##### Dimensions

Rating (A)	A	B	C	D	E	Width max. (mm)
160	100	25	85	117	45	32
250	150	25	120	173	45	32
400	176	25	150	200	65	55
630	210	25	160	240	65	75

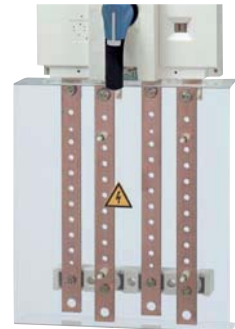


shunt\_012\_a\_1\_x\_cat

## SIRCO multipolar distribution blocks

### References

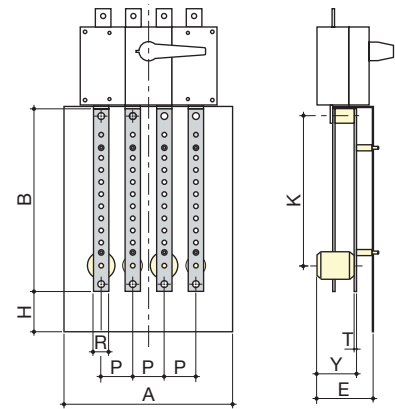
Rating (A)	No. of poles	Icc (kA rms)	No of feeders per section (mm <sup>2</sup> )	Reference
160	3 P	10	1 x 95 + 8 x 25	5411 <b>3016</b>
160	4 P	10	1 x 95 + 8 x 25	5411 <b>4016</b>
250	3 P	15	1 x 150 + 8 x 50	5411 <b>3025</b>
250	4 P	15	1 x 150 + 8 x 50	5411 <b>4025</b>
400	3 P	21	1 x 240 + 8 x 95	5411 <b>3040</b>
400	4 P	21	1 x 240 + 8 x 95	5411 <b>4040</b>
630	3 P	21	1 x 300 + 8 x 150	5411 <b>3063</b>
630	4 P	21	1 x 300 + 8 x 150	5411 <b>4063</b>



repair\_020\_b\_1\_cat

### Dimensions

Rating (A)	No. of poles	A	B	E	H	K	P	R	T	Y
160	3 P	154	286	73	46.5	261.5	36	20	4	54
160	4 P	190	286	73	46.5	261.4	36	20	4	54
250	3 P	210	307	83	57.5	279	50	25	4	56
250	4 P	260	307	83	57.5	279	50	25	4	56
400	3 P	281	375	116	82.5	340	65	32	5	82
400	4 P	346	375	116	82.5	340	65	32	5	82
630	3 P	271	438	117	90.5	410.5	65	40	6	83
630	4 P	346	438	117	90.5	410.5	65	40	6	83



repair\_003\_c\_1\_x\_cat

Terminal connections distribution blocks with front protection cover against direct contact (breaking device not supplied).

## Multipolar distribution blocks for FUSERBLOC and SIRCO VM2

### References

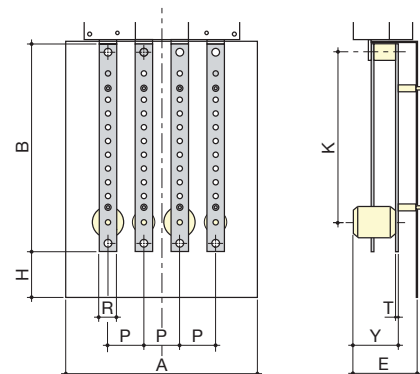
Rating (A)	Fuse size	No. of poles	Device	No of feeders per section (mm <sup>2</sup> )	Reference
100/125/160	22x58/00	3 P	FUSERBLOC	10x16 + 2x35 + 3xM6	5413 <b>3016</b>
100/125/160	22x58/00	4 P	FUSERBLOC	10x16 + 2x35 + 3xM6	5413 <b>4016</b>
160	0	3 P	FUSERBLOC	10x16 + 2x35 + 3xM6	5413 <b>3017</b>
160	0	4 P	FUSERBLOC	10x16 + 2x35 + 3xM6	5413 <b>4017</b>
250	1	3 P	FUSERBLOC	11 x M8	5413 <b>3025</b>
250	1	4 P	FUSERBLOC	11 x M8	5413 <b>4025</b>
400	2	3 P	FUSERBLOC	11 x M8	5413 <b>3040</b>
400	2	4 P	FUSERBLOC	11 x M8	5413 <b>4040</b>
160/200		3 P	SIRCO VM2	10x16 + 2x35 + 3xM6	5413 <b>3020</b>
160/200		4 P	SIRCO VM2	10x16 + 2x35 + 3xM6	5413 <b>4020</b>



repair\_013\_a\_2\_cat

### Dimensions

Rating (A)	No. of poles	Device	A	B	E	H	K	P	R	T	Y
100/125/160	3 P	FUSERBLOC	110	260	61	20	233	36	20	4	39
100/125/160	4 P	FUSERBLOC	145	260	61	20	233	36	20	4	39
160	3 P	FUSERBLOC	150	260	61	20	233	50	20	4	39
160	4 P	FUSERBLOC	200	260	61	20	233	50	20	4	39
250	3 P	FUSERBLOC	185	340	67	15	300	60	32	5	45
250	4 P	FUSERBLOC	245	340	67	15	300	60	32	5	45
400	3 P	FUSERBLOC	210	340	67	15	300	66	32	5	45
400	4 P	FUSERBLOC	275	340	67	15	300	66	32	5	45
160/200	3 P	SIRCO VM2	142	260	61	20	233	27.5	20	4	39
160/200	4 P	SIRCO VM2	142	260	61	20	233	27.5	20	4	39



repair\_004\_a\_1\_x\_cat