



Photoelectric sensors
W24-2, Photoelectric retro-reflective sensor,
Standard optics

WL24-2R240



Model Name > [WL24-2R240](#)
Part No. > [1017858](#)



Illustration may differ

At a glance

- Metal housing that has been IP 69k tested
- Switch selectable PNP or NPN output
- Switch selectable Light or Dark operating mode
- Variants with DC voltage and universal AC/DC voltage with UL approval
- Optional test input, adjustable ON and OFF time delays, alarm output and front screen heating
- M12 or terminal chamber connection: 90° rotatable

Your benefits

- Metal housing that has been IP 69K tested provides reliability and a long service life
- High operating reserve at a long sensing range reduces downtime
- Alarm output signals marginal operation to provide an early warning
- Test input provides diagnostic feedback for example misalignment
- Selectable output type, operating mode, and adjustable time delays makes integration easier and reduce the number of devices needed
- Ensuring reliable operation in environments with temperatures fluctuation due to standard or high-power front lens heating (prevention and reduction of condensation water on the front lens)
- Variants with DC voltage and universal AC/DC voltage provide installation flexibility
- Red light provides easy alignment, which saves time



Features

| | |
|----------------------------------|---|
| Sensor/detection principle: | Photoelectric retro-reflective sensor, Standard optics |
| Dimensions (W x H x D): | 27 mm x 87.5 mm x 65 mm |
| Housing design (light emission): | Rectangular |
| Sensing range max.: | 0 m ... 22 m ¹⁾ |
| Sensing range: | 0 m ... 15 m ²⁾ |
| Type of light: | Visible red light |
| Light source: | LED ³⁾ |
| Light spot diameter (distance): | Ø 250 mm (15 m) |
| Sensitivity adjustment: | Sensitivity adjustment |
| Time type: | Switch on delay time delay off |
| Delay time: | Adjustable via time delay selector switch: 0.5 ... 10 s |

1) 2) PL80A 3) Average service life of 100,000 h at $T_A = +25\text{ °C}$

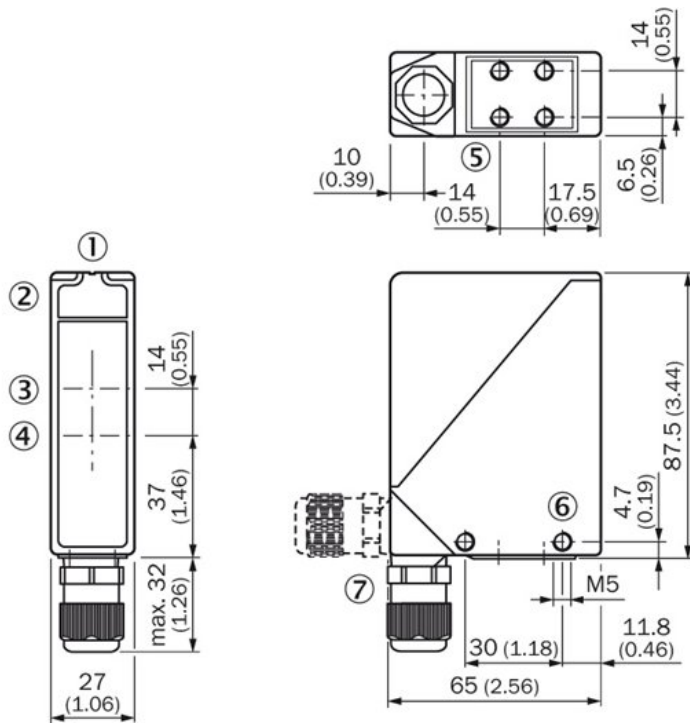
Mechanics/electronics

| | |
|--|--|
| Supply voltage:: | 12 V DC ... 240 V DC) 24 V ... 240 V AC 1) 2) |
| Power consumption: | < 2 VA |
| Output type: | Relay, Light/dark-switching, selectable via light/dark selector, change-over contacts, electrically isolated |
| Output function: | Change-over contacts |
| Switching mode selector: | Selectable via light/dark selector |
| Switching current (switching voltage): | 4 A (24 V DC), 4 A (250 V AC) |
| Response time: | ≤ 10 ms |
| Switching frequency: | 10 Hz 4) |
| Connection type: | Terminal connection with M16 gland 5) |
| Circuit protection:: | A, C 6) 7) |
| Protection class: | II 8) |
| Weight: | 330 g |
| Polarisation filter: | ✓ |
| Front screen heating: | ✓ |
| Housing material: | Zinc diecast |
| Optics material: | PMMA |
| Enclosure rating: | IP 69K |
| Usage category: | AC-15, DC-13, According to EN 60947-1 |
| Ambient operating temperature: | -40 °C ... 60 °C |
| Ambient storage temperature: | -40 °C ... 75 °C |
| UL File-No.: | UL No. NRKH.E181493 & cUL No. NRKH7.E181493 |
| Switching mode characteristic: | Electrically isolated |

Provide suitable spark suppression for inductive or capacitive loads;

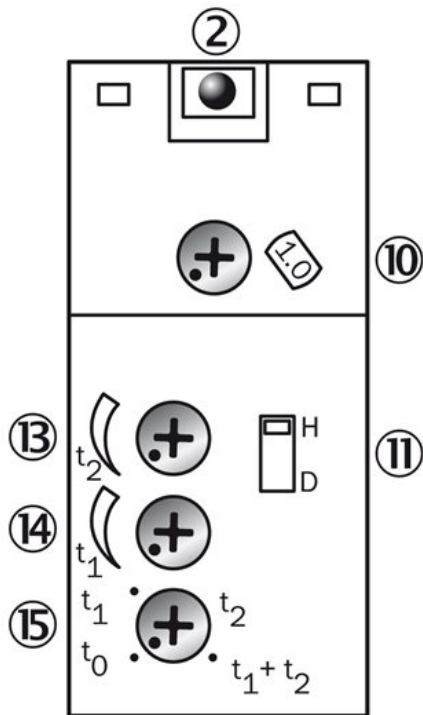
1) Limit values, operation in short-circuit protected network max. 8 A 2) +/- 10 % 3) Provide suitable spark suppression for inductive or capacitive loads 4) With light/dark ratio 1:1 5) Connection rotatable by 90° 6) A = V_S connections reverse-polarity protected 7) C = interference suppression 8) Rated voltage 250 V AC/DC

Dimensional drawing



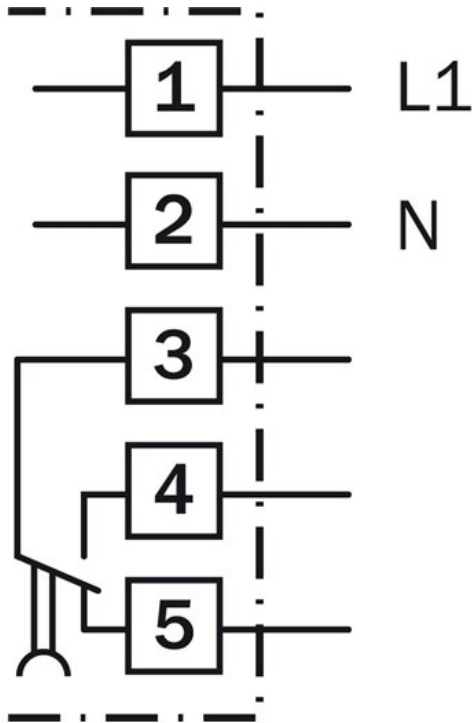
- |1| Alignment sight
- |2| LED signal strength indicator
- |3| Center of optical axis, sender
- |4| Center of optical axis, receiver
- |5| M5 threaded mounting hole, 6 mm deep
- |6| M5 threaded mounting hole, through-hole
- |7| M16 screw fixing and plug rotatable by 90°

Adjustments possible

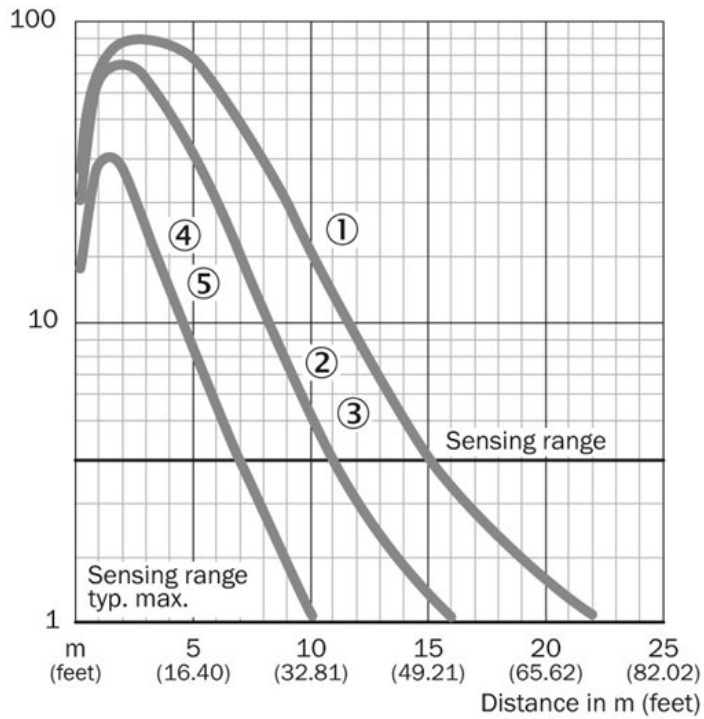


- |2| LED signal strength indicator
- |10| Adjustment sensing range (WT) / sensitivity (WL, WS/WE)
- |11| Light/dark selector
- |12| Time control t2=OFF-delay
- |13| Time control t1=ON-delay
- |14| time delay selector switch

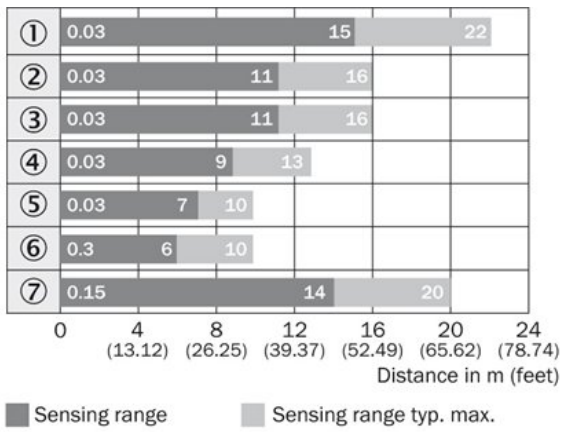
Connection diagram



Characteristic curve



Sensing range diagram

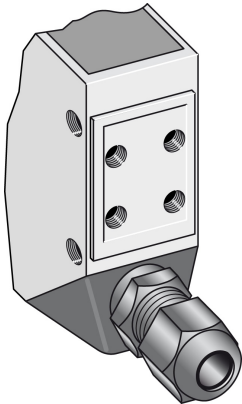


- |1| PL80A
- |2| PL50A
- |3| PL40A
- |4| PL30A
- |5| PL20A
- |6| Reflective tape Diamond Grade
- |7| C110A

Reflector type

- ① PL80A
- ② PL50A
- ③ PL40A
- ④ PL30A
- ⑤ PL20A
- ⑥ Diamond Grade
(20 cm x 20 cm)
- ⑦ C110

Connection type



Australia

Phone +61 3 9457 0600
1800 334 802 – tollfree
E-Mail sales@sick.com.au

Belgium/Luxembourg

Phone +32 (0)2 466 55 66
E-Mail info@sick.be

Brasil

Phone +55 11 3215-4900
E-Mail sac@sick.com.br

Canada

Phone +1 905 771 14 44
E-Mail information@sick.com

Ceská Republika

Phone +420 2 57 91 18 50
E-Mail sick@sick.cz

China

Phone +86 4000 121 000
E-Mail info.china@sick.net.cn
Phone +852-2153 6300
E-Mail ghk@sick.com.hk

Danmark

Phone +45 45 82 64 00
E-Mail sick@sick.dk

Deutschland

Phone +49 211 5301-301
E-Mail kundenservice@sick.de

España

Phone +34 93 480 31 00
E-Mail info@sick.es

France

Phone +33 1 64 62 35 00
E-Mail info@sick.fr

Great Britain

Phone +44 (0)1727 831121
E-Mail info@sick.co.uk

India

Phone +91-22-4033 8333
E-Mail info@sick-india.com

Israel

Phone +972-4-6801000
E-Mail info@sick-sensors.com

Italia

Phone +39 02 27 43 41
E-Mail info@sick.it

Japan

Phone +81 (0)3 3358 1341
E-Mail support@sick.jp

Magyarország

Phone +36 1 371 2680
E-Mail office@sick.hu

Nederlands

Phone +31 (0)30 229 25 44
E-Mail info@sick.nl

Norge

Phone +47 67 81 50 00
E-Mail austefjord@sick.no

Österreich

Phone +43 (0)22 36 62 28 8-0
E-Mail office@sick.at

Polska

Phone +48 22 837 40 50
E-Mail info@sick.pl

România

Phone +40 356 171 120
E-Mail office@sick.ro

Russia

Phone +7-495-775-05-30
E-Mail info@sick.ru

Schweiz

Phone +41 41 619 29 39
E-Mail contact@sick.ch

Singapore

Phone +65 6744 3732
E-Mail admin@sicksgp.com.sg

Slovenija

Phone +386 (0)1-47 69 990
E-Mail office@sick.si

South Africa

Phone +27 11 472 3733
E-Mail info@sickautomation.co.za

South Korea

Phone +82 2 786 6321/4
E-Mail info@sickkorea.net

Suomi

Phone +358-9-25 15 800
E-Mail sick@sick.fi

Sverige

Phone +46 10 110 10 00
E-Mail info@sick.se

Taiwan

Phone +886-2-2375-6288
E-Mail sales@sick.com.tw

Türkiye

Phone +90 (216) 528 50 00
E-Mail info@sick.com.tr

United Arab Emirates

Phone +971 (0) 4 8865 878
E-Mail info@sick.ae

USA/México

Phone +1(952) 941-6780
1 800-325-7425 – tollfree
E-Mail info@sickusa.com

More representatives and agencies
at www.sick.com