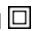


Datasheet - TESZ1102

Safety switch for hinged guards / Hinge safety switch / TESZ



- Thermoplastic enclosure
- Double-insulated 
- Good resistance to oil and petroleum spirit
- 111,5 mm x 92 mm x 36 mm
- 2 cable entries M 20 x 1.5
- Simple fitting, especially on 40 mm profiles

(Minor differences between the printed image and the original product may exist!)

Ordering details

Product type description	TESZ1102
Article number	101028407
EAN code	4250116201662

Approval

Approval




Classification

Standards	EN ISO 13849-1
B _{10d} Normally-closed contact (NC)	2.000.000
B _{10d} Normally open contact (NO)	1.000.000
Mission time	20 Years
notice	$MTTF_d = \frac{B_{10d}}{0,1 \times n_{op}}$ $n_{op} = \frac{d_{op} \times h_{op} \times 3600 \text{ s/h}}{t_{cycle}}$

Global Properties

Product name	TESZ
Standards	IEC/EN 60947-5-1, BG-GS-ET-15

Compliance with the Directives (Y/N) 

Yes

Materials

- Material of the housings	Plastic, glass-fibre reinforced thermoplastic, self-extinguishing
- Material of the contacts	Silver
- Material of the hinge	Aluminium
Housing coating	None
Weight	420 g

Mechanical data

Design of electrical connection	Screw connection
Cable entry M 20 x 1.5	2
Cable section	
- Min. Cable section	0,5 mm ²
- Max. Cable section	1 mm ²
Mechanical life	> 1.000.000 operations
Switching frequency	max. 120/h
notice	All indications about the cable section are including the conductor ferrules.
Positive break angle	10°
Positive break force	1 N
additional hinge (Y/N)	Yes
mounting hinge (Y/N)	Yes

Ambient conditions

Ambient temperature	
- Min. environmental temperature	-25 °C
- Max. environmental temperature	+65 °C
Protection class	IP65

Electrical data

Design of control element	Normally open contact (NO), Opener (NC)
Switching principle	Creep circuit element
Number of auxiliary contacts	1 piece
Number of safety contacts	2 piece
Rated impulse withstand voltage U _{imp}	2.5 kV
Rated insulation voltage U _i	250 V
Thermal test current I _{the}	2.5 A
Utilisation category	AC-15: 230 V / 2 A, DC-13: 24 V / 1 A
Max. fuse rating	2 A gG D-fuse

ATEX

Explosion protection categories for gases	None
Explosion protected category for dusts	None

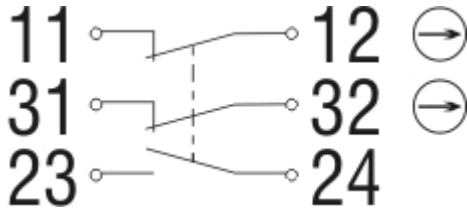
Dimensions

Dimensions of the sensor	
- Width of sensor	111.5 mm
- Height of sensor	92 mm
- Length of sensor	36 mm

notice

The additional hinge including mounting accessories is also available separately, part number Z 400
 The opening angle has been set to 4° in factory.

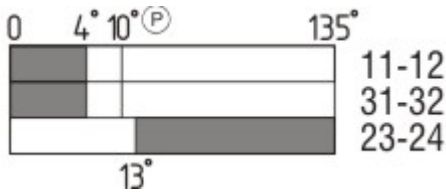
Diagram



Note Diagram

- positive break NC contact
- active
- no active
- Normally-open contact
- Normally-closed contact

Switch travel diagram



Notes Switch travel diagram

- Contact closed
- Contact open
- Setting range
- Break point
- Positive opening sequence/- angle
- VS** adjustable range of NO contact
- VÖ** adjustable range of NC contact
- N** after travel

Ordering code

TESZ(1)(2)(3)(4)/(5)(6)/(7)

(1)	
without	Material of the hinge Aluminium
X	Material of the hinge Stainless steel
(2)	
R	mechanische Wiederanlaufsperr
(3)	
10	1 Opener (NC)
102	1 Opener (NC) / 1 Normally open contact (NO)
110	2 Opener (NC)
1102	2 Opener (NC) / 1 Normally open contact (NO)

1110	3 Opener (NC)
(4)	
<i>without</i>	Screw connection
ST1	male connector bottom (M12, 8-pole)
ST2	Connector above (M12, 8-pole)
(5)	
<i>without</i>	with additional hinge
S	without additional hinge
(6)	
30	Suitable for mounting to profile systems 30 mm
35	Suitable for mounting to profile systems 35 mm
<i>without</i>	Suitable for mounting to profile systems 40 mm
45	Suitable for mounting to profile systems 45 mm
(7)	
<i>without</i>	switching angle Opener (NC) at 4°
5°	switching angle Opener (NC) at 5°
8°	switching angle Opener (NC) at 8°

Documents

Datasheet (de) 901 kB, 10.09.2012

Code: kteszp01

Datasheet (en) 1 MB, 10.09.2012

Code: gteszp02

Operating instructions and Declaration of conformity (de) 584 kB, 24.05.2012

Code: mrl_tesz_de

Operating instructions and Declaration of conformity (fr) 469 kB, 26.07.2012

Code: mrl_tesz_fr

Operating instructions and Declaration of conformity (es) 468 kB, 26.07.2012

Code: mrl_tesz_es

Operating instructions and Declaration of conformity (nl) 468 kB, 26.07.2012

Code: mrl_tesz_nl

Operating instructions and Declaration of conformity (en) 451 kB, 14.09.2012

Code: mrl_tesz_en

Operating instructions and Declaration of conformity (it) 466 kB, 26.07.2012

Code: mrl_tesz_it

Operating instructions and Declaration of conformity (cs) 469 kB, 07.09.2012

Code: mrl_tesz_cs

Operating instructions and Declaration of conformity (da) 474 kB, 23.08.2012

Code: mrl_tesz_da

Operating instructions and Declaration of conformity (jp) 622 kB, 20.09.2012

Code: mrl_tesz_jp

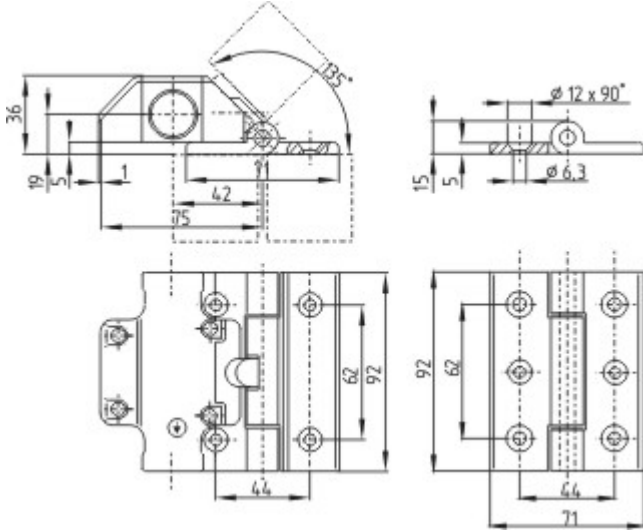
Operating instructions and Declaration of conformity (pt) 472 kB, 07.09.2012

Code: mrl_tesz_pt

BG-test certificate (de) 74 kB, 11.09.2012

Code: z_tesp02

Images



Dimensional drawing (basic component)

K.A. Schmersal GmbH & Co. KG, Möddinghofe 30, D-42279 Wuppertal

The data and values have been checked thoroughly. Technical modifications and errors excepted.

Generiert am 20.03.2014 - 17:22:11h Kasbase 2.2.18.F DBI

