

Datasheet - TR 422-10Y

Position switch / medium heavy Position switch / T 422 / 422 Roller plunger R



- Metal enclosure
- 1 Contact
- 106 mm x 71 mm x 63 mm (basic component)
- Protection class IP65
- Actuator can be repositioned by 90°
- 2 cable entries M 20 x 1.5

(Minor differences between the printed image and the original product may exist!)

Ordering details


Product type description	TR 422-10Y
Article number	101058660
EAN code	4030661033167

Approval

Approval



Global Properties

Product name	422 Rollendruckbolzen R
Standards	EN 60947-5-1
Compliance with the Directives (Y/N) 	Yes
Suitable for safety functions (Y/N)	No
Standard housing (Y/N)	No
Materials	
- Material of the housings	cast iron, galvanized
- Roller material	Plastic
- Material of the contacts	Silver
Housing coating	painted
Weight	935 g
Slide form	Castor

Mechanical data

Design of electrical connection	Screw connection
Cable section	
- Min. Cable section	1.5 mm ²
- Max. Cable section	2.5 mm ²
AWG-Number	13
Active principle	mechanical
Mechanical life	10.000.000 operations
Design of actuating element	Roller plunger
Bounce duration	
Switchover time	
Contact opening	2 x 6 mm
Actuating speed with vertical actuating angle to switch axis	
- Min. Actuating speed	1 mm/min
- Max. Actuating speed	0,5 m/s
- Actuating angle from left of switch axis	30°
- Actuating angle from right of switch axis	30°
notice	All indications about the cable section are including the conductor ferrules.

Ambient conditions

Ambient temperature	
- Min. environmental temperature	-30 °C
- Max. environmental temperature	+90 °C
Protection class	IP65 to IEC/EN 60529

Electrical data

Design of control element	Normally open contact (NO)
- with double break	
Switching principle	Creep circuit element
Number of shutters	1 piece
Number of openers	0 piece
Rated insulation voltage U _i	400 V
Thermal test current I _{th}	16 A
Utilisation category	AC-15: 400 V / 4 A
Max. fuse rating	16 A gG D-fuse






Dimensions

Dimensions of the sensor	
- Width of sensor	106 mm
- Height of sensor	117 mm
- Length of sensor	63 mm
Roller wide	6.5 mm
Roller diameter	25 mm

Switch travel diagram



Notes Switch travel diagram

-  Contact closed
 -  Contact open
 -  Setting range
 -  Break point
 -  Positive opening sequence/- angle
- VS** adjustable range of NO contact
VÖ adjustable range of NC contact
N after travel

Ordering suffix

The applicable ordering suffix is added at the end of the part number of the safety switch.

Order example: TR 422-10Y- **1276-2**

...- 1276-2	gold-plated contacts
...- T	Temperature-resistant and tropical version with ceramic insulation for -40°C ... +200°C Rated insulation voltage Ui: 500 V (Snap action)
...- RMS	Available with metal roller

Ordering code

T(1) 422- (2) Y- (3)	
(1)	
S	Plunger S
2S	Telescopic plunger 2S
R	Roller plunger R
K	Offset roller lever K
J	Offset roller lever J
2C	Fork lever 2C
L	Roller lever L
D	Roller lever D
(2)	
01	1 Opener (NC)
10	1 Normally open contact (NO)
(3)	
T	Temperature-resistant and tropical version with ceramic insulation for -40°C ... +200°C
1276-2	gold-plated contacts

Documents

Declaration of conformity (de, en) 227 kB, 03.07.2013

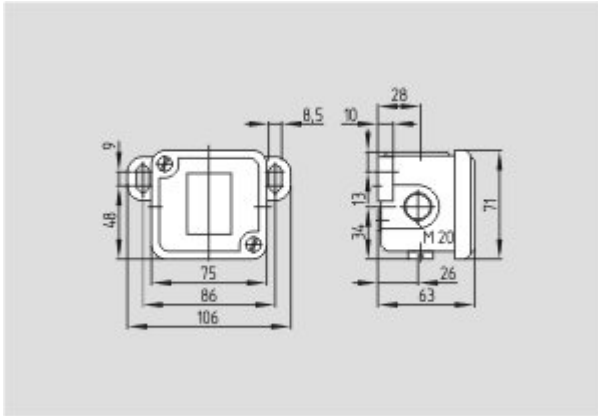
Code: __422p01

CCC certification (cn) 125 kB, 30.01.2014

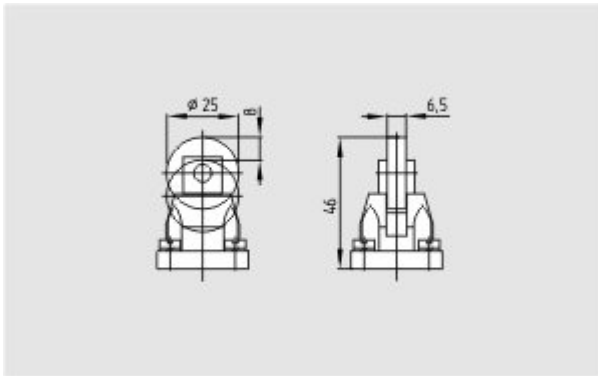
Code: q_352p03

CCC certification (en) 180 kB, 30.01.2014

Images



Dimensional drawing (basic component)



Dimensional drawing (miscellaneous)



Operating principle
