

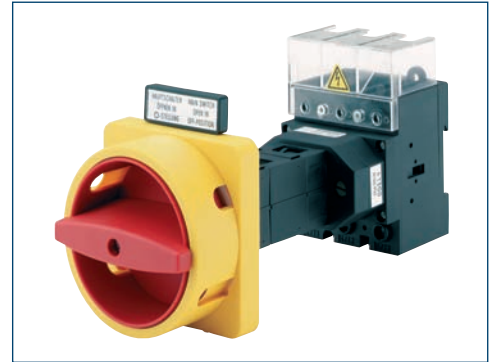
63A / 80A / 100A / 125A

- Main/Emergency-Off Switch
- Main Switch

3 ... 8 pole

IP66 (front)

Four hole front mounting 48 x 48 mm



Order code structure:

Ordering example: 6 pole Main Switch, 80A, padlockable with V-handle:

Type - Switching programme - Mounting form  
H408 - 41600 - 234V1

Type	Rated data (IEC 60947)			Degree of protection
	Operational current I <sub>e</sub> AC-21A (A)	Operational power (at 380–440V) AC-23A (kW) AC-3 (kW)		
H406	63	22	18.5	IP1B
H408	80	30	22	IP1B
H410	100	37	30	IP1B
H412	125	45	37	IP1B

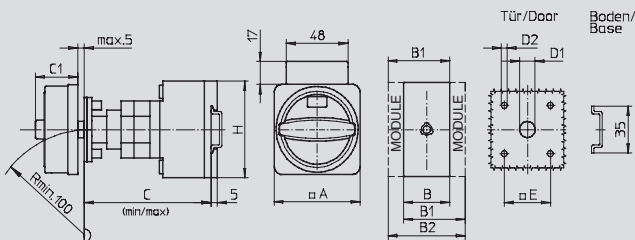
Detailed technical data page 108.

Switching progr.	Poles	Auxiliary contacts		Switching progr.	Poles	Auxiliary contacts	
		n/o	n/c			n/o	n/c
3 ... 4 pole:				6 ... 8 pole:			
41300	3	0	0	41600	6	0	0
41311	3	1	1	41611	6	1	1
41320	3	2	0	41620	6	2	0
41400	4	0	0	41800	8	0	0
41411	4	1	1				
41420	4	2	0				

Switching diagrams and further switching programmes page 95.

Mounting form	Operator	Main/Emergency-Off Switch	Mounting form	Operator	Main Switch
234N4		N-padlock device yellow/red	234N1		N-padlock device black
234M4		M-padlock device yellow/red	234M1		M-padlock device black
234V4		padlockable with V-handle yellow/red	234V1		padlockable with V-handle silver/black

Dimensions in mm:



Modular shaft extensions see page 102.

Mounting form	A	B	B1	B2	C <sub>min</sub>	C <sub>max</sub>	C1	D1	D2	E	H
Types H406 / H408 / H410 / H412 (3 ... 4 pole):											
234N4 / 234N1	88	70	89	108	102	117	45	15	5	48	80
234M4 / 234M1	88	70	89	108	102	117	50	15	5	48	80
234V4 / 234V1	64	70	89	108	102	117	40	15	5	48	80
Types H406 / H408 / H410 / H412 (6 ... 8 pole):											
234N4 / 234N1	88	140	159	178	115	130	45	15	5	48	80
234M4 / 234M1	88	140	159	178	115	130	50	15	5	48	80
234V4 / 234V1	64	140	159	178	115	130	40	15	5	48	80