

Snap on mounting

Door interlock with metal shaft extension

Four hole front mounting

63A / 80A / 100A / 125A

- Main/Emergency-Off Switch
- Main Switch

3 ... 8 pole

IP66 (front)

Four hole front mounting 48 x 48 mm



Order code structure:

Ordering example: 6 pole Main Switch, 125A, N-padlock device:

Type - Switching programme - Mounting form

H412 - 41600 - 483N1

Type	Rated data (IEC 60947)			Degree of protection
	Operational current I _e AC-21A (A)	Operational power (at 380–440V) AC-23A (kW) AC-3 (kW)		
H406	63	22	18.5	IP1B
H408	80	30	22	IP1B
H410	100	37	30	IP1B
H412	125	45	37	IP1B

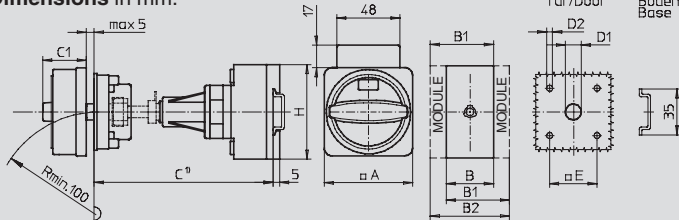
Detailed technical data page 108.

Switching progr.	Poles	Auxiliary contacts		Switching progr.	Poles	Auxiliary contacts	
		n/o	n/c			n/o	n/c
3 ... 4 pole:				6 ... 8 pole:			
41300	3	0	0	41600	6	0	0
41311	3	1	1	41611	6	1	1
41320	3	2	0	41620	6	2	0
41400	4	0	0	41800	8	0	0
41411	4	1	1				
41420	4	2	0				

Switching diagrams and further switching programmes page 95.

Mounting form	Operator	Main/Emergency-Off Switch	Mounting form	Operator	Main Switch
483N4		N-padlock device yellow/red	483N1		N-padlock device black
483M4		M-padlock device yellow/red	483M1		M-padlock device black
483V4		padlockable with V-handle yellow/red	483V1		padlockable with V-handle silver/black

Dimensions in mm:



¹⁾ Internal depth: inside of door to top of DIN rail.

Metal shaft is not included. Please order separately, see page 103.

Mounting form	A	B	B1	B2	C1	D1	D2	E	H
Types H406 / H408 / H410 / H412 (3 ... 4 pole):									
483N4 / 483N1	88	70	89	108	45	15	5	48	80
483M4 / 483M1	88	70	89	108	50	15	5	48	80
483V4 / 483V1	64	70	89	108	40	15	5	48	80
Types H406 / H408 / H410 / H412 (6 ... 8 pole):									
483N4 / 483N1	88	140	159	178	45	15	5	48	80
483M4 / 483M1	88	140	159	178	50	15	5	48	80
483V4 / 483V1	64	140	159	178	40	15	5	48	80