



Main/Emergency-Off Switch ■
Main Switch ■

3 ... 4 pole

IP66

Powder coated mild steel enclosure
Cover interlock in ON position

Order code structure:

Ordering example: 3 pole Main/Emergency-Off Switch, 63A, M-padlock device:

Type - Switching programme - Mounting form

H406 - 41300 - 987M4

| Type | Rated data (IEC 60947) | | |
|------|--|--|------|
| | Operational current I _e AC-21A (A) | Operational power (at 380–440V) AC-23A (kW) AC-3 (kW) | |
| H406 | 63 | 22 | 18.5 |
| H408 | 80 | 30 | 22 |

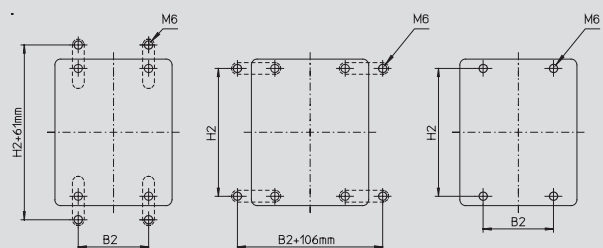
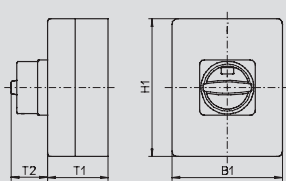
Detailed technical data page 108.

| Switching progr. | Poles | Auxiliary contacts | | Switching progr. | Poles | Auxiliary contacts | |
|------------------|-------|--------------------|-----|------------------|-------|--------------------|---------------------|
| | | n/o | n/c | | | n/o | n/c |
| 41300 | 3 | 0 | 0 | 46300 | 3 | 0 | 0 (with N-terminal) |
| 41311 | 3 | 1 | 1 | 46311 | 3 | 1 | 1 (with N-terminal) |
| 41320 | 3 | 2 | 0 | 46320 | 3 | 2 | 0 (with N-terminal) |
| 41400 | 4 | 0 | 0 | | | | |
| 41411 | 4 | 1 | 1 | | | | |
| 41420 | 4 | 2 | 0 | | | | |

Switching diagrams and further switching programmes (3 ... 4 pole) page 95.

| Mounting form | Operator | Main/Emergency-Off Switch | Mounting form | Operator | Main Switch |
|---------------|----------|-----------------------------|---------------|----------|------------------------|
| 987N4 | | N-padlock device yellow/red | 987N1 | | N-padlock device black |
| 987M4 | | M-padlock device yellow/red | 987M1 | | M-padlock device black |

Dimensions in mm:



| Mounting form | H1 | B1 | T1 | T2 | H2 | B2 |
|---------------|-----|-----|-----|----|-----|----|
| 987N4 / 987N1 | 200 | 150 | 120 | 45 | 182 | 85 |
| 987M4 / 987M1 | 200 | 150 | 120 | 50 | 182 | 85 |

Blank side walls
Mounting brackets see page 105.