

Door interlock with metal shaft extension

Single hole front mounting

63 A / 80 A / 100 A / 125 A

Main/Emergency-Off Switch ■
Main Switch ■

3 ... 8 pole

IP66 (front)

Single hole front mounting \varnothing 22.5 mm



Order code structure:

Ordering example: 8 pole Main/Emergency-Off Switch, 63A, N-padlock device:

Type - **Switching programme** - **Mounting form**

H406 - 41800 - 281N4

Type	Rated data (IEC 60947)			Degree of protection
	Operational current I_e AC-21A (A)	Operational power (at 380–440V) AC-23A (kW) AC-3 (kW)		
H406	63	22	18.5	IP1B
H408	80	30	22	IP1B
H410	100	37	30	IP1B
H412	125	45	37	IP1B

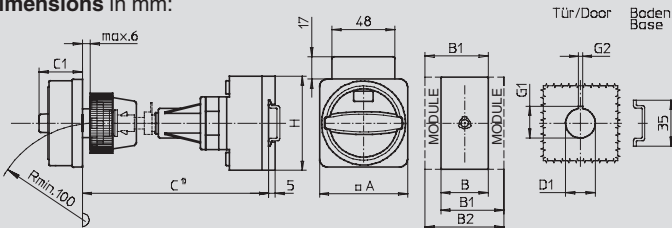
Detailed technical data page 108.

Switching progr.	Poles	Auxiliary contacts		Switching progr.	Poles	Auxiliary contacts	
		n/o	n/c			n/o	n/c
3 ... 4 pole:				6 ... 8 pole:			
41300	3	0	0	41600	6	0	0
41311	3	1	1	41611	6	1	1
41320	3	2	0	41620	6	2	0
41400	4	0	0	41800	8	0	0
41411	4	1	1				
41420	4	2	0				

Switching diagrams and further switching programmes page 95.

Mounting form	Operator	Main/Emergency-Off Switch	Mounting form	Operator	Main Switch
281N4		N-padlock device yellow/red	281N1		N-padlock device black
281M4		M-padlock device yellow/red	281M1		M-padlock device black
281V4		padlockable with V-handle yellow/red	281V1		padlockable with V-handle silver/black

Dimensions in mm:



¹⁾ Internal depth: outside of door to top of DIN rail.

Metal shaft is not included. Please order separately, see page 103.

Mounting form	A	B	B1	B2	C1	D1	G1	G2	H
Types H406 / H408 / H410 / H412 (3 ... 4 pole):									
281N4 / 281N1	67	70	89	108	33	22.5	24.2	3.2	80
281M4 / 281M1	67	70	89	108	38	22.5	24.2	3.2	80
281V4 / 281V1	64	70	89	108	39	22.5	24.2	3.2	80
Types H406 / H408 / H410 / H412 (6 ... 8 pole):									
281N4 / 281N1	67	140	159	178	33	22.5	24.2	3.2	80
281M4 / 281M1	67	140	159	178	38	22.5	24.2	3.2	80
281V4 / 281V1	64	140	159	178	39	22.5	24.2	3.2	80