

#### Door interlock with modular shaft extension

With N/PE connection link

**20 A / 25 A / 32 A / 40 A / 63 A**

**Main/Emergency-Off Switch** ■  
**Main Switch** ■

**3 ... 8 pole**

**IP66** (front)

Four hole front mounting 36 × 36 mm



#### Order code structure:

Ordering example: 8 pole Main Switch, 32A, N-padlock device:

**Type** - **Switching programme** - **Mounting form**

**H226 - 41800 - 534N1**

Type	Rated data (IEC 60947)			Degree of protection Terminals
	Operational current I <sub>e</sub> AC-21A (A)	Operational power (at 380–440V) AC-23A (kW) AC-3 (kW)		
H216	20	5.5	3.7	IP20
H220	25	7.5	5.5	IP20
H226	32	11	7.5	IP20
H233	40	15	11	IP20
H263	63	22	18.5	IP20

Detailed technical data page 108.

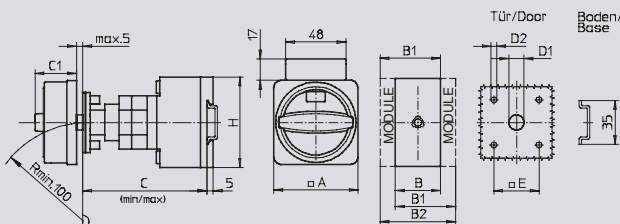
Switching progr.	Poles	Auxiliary contacts			Switching progr.	Poles	Auxiliary contacts		
		n/o	n/c				n/o	n/c	
3 ... 4 pole:					6 ... 8 pole:				
41300	3	0	0		41600	6	0	0	
41311	3	1	1		41611	6	1	1	
41320	3	2	0		41620	6	2	0	
41400	4	0	0	not available for types H216, H220,	41800	8	0	0	
41411	4	1	1	H226, H233	not available for type H263				
41420	4	2	0						

Switching diagrams and further switching programmes page 95.

Mounting form	Operator	Main/Emergency-Off Switch	Mounting form	Operator	Main Switch
534N4		N-padlock device yellow/red	534N1		N-padlock device black
534M4		M-padlock device yellow/red	534M1		M-padlock device black
534V4 *		padlockable with V-handle yellow/red	534V1 *		padlockable with V-handle silver/black

\*for 3 ... 4 pole switching programmes only

#### Dimensions in mm:



Modular shaft extensions see page 102.

Mounting form	A	B	B1	B2	C <sub>min</sub>	C <sub>max</sub>	C1	D1	D2	E	H
Types H216 / H220 / H226 / H233 (6 ... 8 pole):											
534N4 / 534N1	67	72	84	96	100	115	33	15	4.5	36	70
534M4 / 534M1	67	72	84	96	100	115	38	15	4.5	36	70
Type H263 (3 ... 4 pole):											
534N4 / 534N1	67	50	69	88	92	107	33	15	4.5	36	72
534M4 / 534M1	67	50	69	88	92	107	38	15	4.5	36	72
534V4 / 534V1	48	50	69	88	92	107	32	12	4.5	36	72