

Rittal – The System.

Faster – better – everywhere.

► Base/plinth trim panels, side, 100 mm for base/plinth components front and rear – TS 8601.085

Date : Mar 17, 2014

ENCLOSURES

POWER DISTRIBUTION

CLIMATE CONTROL

IT INFRASTRUCTURE

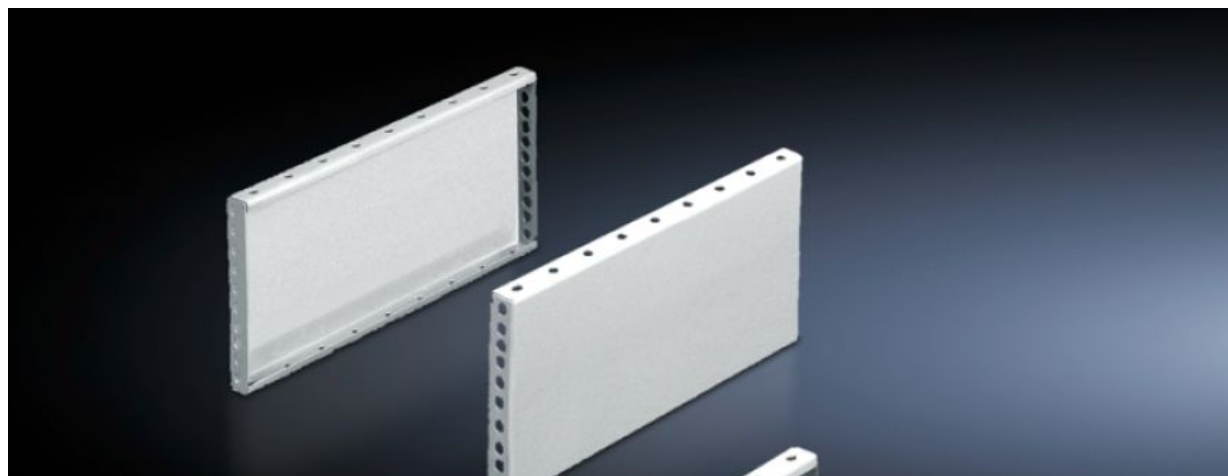
SOFTWARE & SERVICES

FRIEDHELM LOH GROUP



Base/plinth trim panels, side, 100 mm for base/plinth components front and rear – TS 8601.085

created : 17.03.2014 on www.rittal.com/com-en



Product description

Description:

- For mounting between the base/plinth components. At 200 mm height, two 100 mm base/plinth trims may be used. Base/plinth trims may be installed rotated through 90° in order to stabilise bayed base/plinth components.

Material:

- Sheet steel

Surface finish:

- Spray-finished

Colour:

- RAL 7035

Supply includes:

- 1 set = 2 base/plinth trim panels, including parts for attaching to the base/plinth components.

Note:

- When mounting base/plinth trim panels rotated through 90°, the base/plinth baying brackets are required

Packs of:

- 1 set(s)

EAN:

- 4028177232686

Customs tariff number:

- 94039010

Product features

To fit:


- Enclosure type: TS 8
- CM
- TP
- PC
- IW
- TS-IT
- Depth: 800 mm

Dimensions:

- Height: 100 mm

Downloads

Documentation:

-  [Instructions \(EN, DE\)](#)

Rittal – The System.

Faster – better – everywhere.

- Enclosures
- Power distribution
- Climate Control
- IT Infrastructure
- Software & services

Rittal GmbH & Co. KG
Postfach 1662 · D-35726 Herborn
Phone: +49 (0) 2772 505-0 · Fax: +49 (0) 2772 505-2319
E-Mail: info@rittal.com · www.rittal.com

ENCLOSURES

POWER DISTRIBUTION

CLIMATE CONTROL

IT INFRASTRUCTURE

SOFTWARE & SERVICES



FRIEDHELM LOH GROUP