

# Rittal – The System.

Faster – better – everywhere.

## Lock inserts – KS 1492.000

Date : Mar 17, 2014

ENCLOSURES

POWER DISTRIBUTION

CLIMATE CONTROL

IT INFRASTRUCTURE

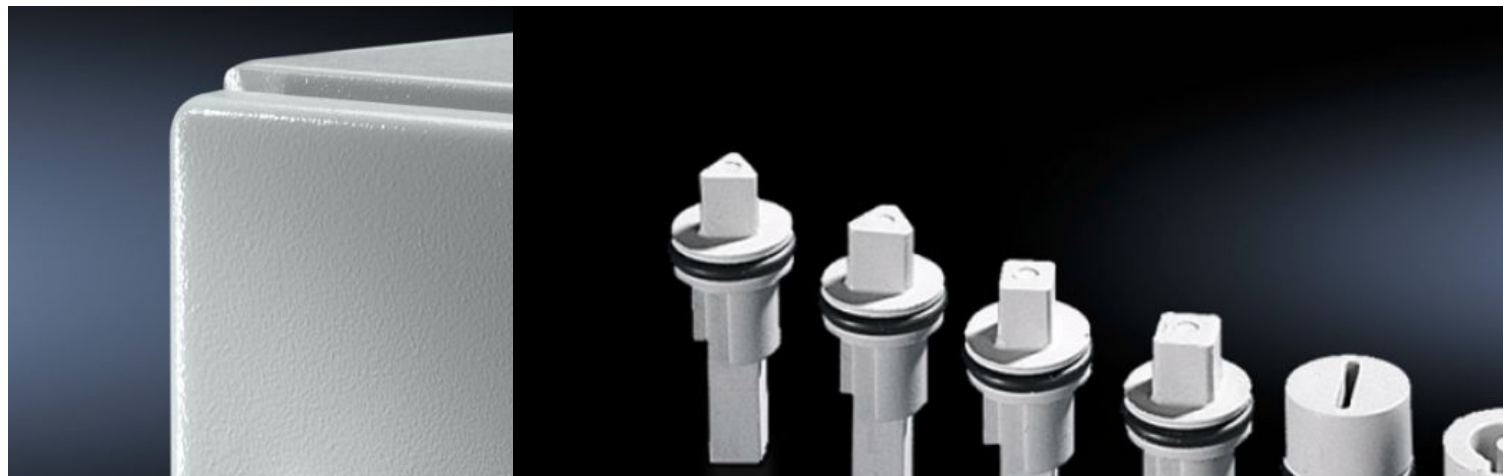
SOFTWARE & SERVICES

FRIEDHELM LOH GROUP



# Lock inserts – KS 1492.000

created : 17.03.2014 on www.rittal.com/com-en



## Product description

**Material:**

- Plastic

**Packs of:**

- 1 pc(s).

**EAN:**

- 4028177007611

**Customs tariff number:**

- 83016000

## Product features

**Design:**

- E
- 3 mm double-bit

**To fit:**

- Enclosure type: KS with cam
- KS with 3-point lock

# Rittal – The System.

---

**Faster – better – everywhere.**

- Enclosures
- Power distribution
- Climate Control
- IT Infrastructure
- Software & services

Rittal GmbH & Co. KG  
Postfach 1662 · D-35726 Herborn  
Phone: +49 (0) 2772 505-0 · Fax: +49 (0) 2772 505-2319  
E-Mail: [info@rittal.com](mailto:info@rittal.com) · [www.rittal.com](http://www.rittal.com)

ENCLOSURES

POWER DISTRIBUTION

CLIMATE CONTROL

IT INFRASTRUCTURE

SOFTWARE & SERVICES



FRIEDHELM LOH GROUP