

Rittal – The System.

Faster – better – everywhere.

► Mounting plates for KL and KL-HD – KL 1568.700

Date : Mar 17, 2014

ENCLOSURES

POWER DISTRIBUTION

CLIMATE CONTROL

IT INFRASTRUCTURE

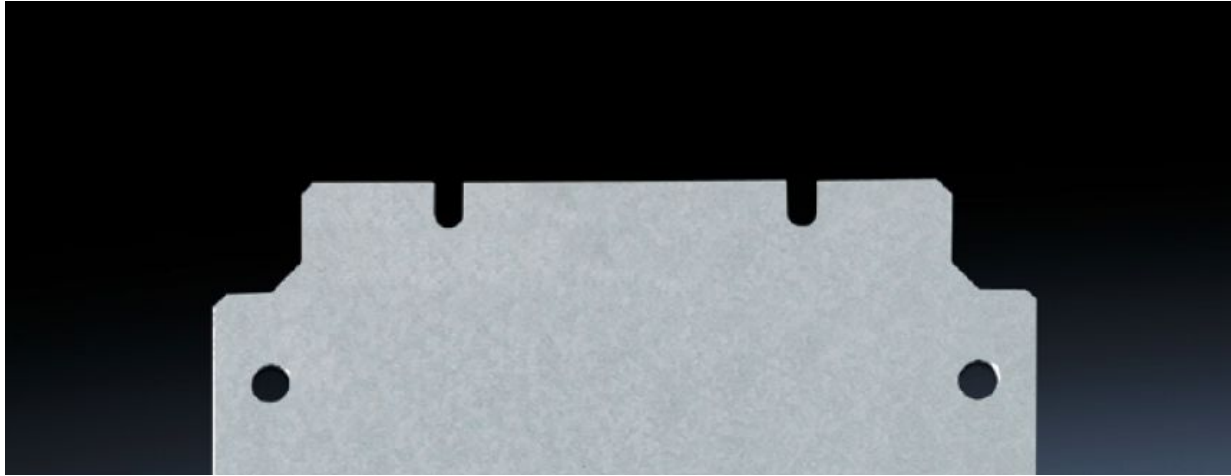
SOFTWARE & SERVICES

FRIEDHELM LOH GROUP



Mounting plates for KL and KL-HD – KL 1568.700

created : 17.03.2014 on www.rittal.com/com-en



Product description

Description:

- For component installation outside of the enclosure. Assembly screws included as accessories with the enclosure.

Material:

- Sheet steel, 2.0 mm

Surface finish:

- zinc-plated

Packs of:

- 1 pc(s).

EAN:

- 4028177010253

Customs tariff number:

- 94039010

Product features

To fit:

- Enclosure type: KL
- KL-HD
- Width: 400 mm
- Height: 300 mm

Please note that there are the following alternative products:

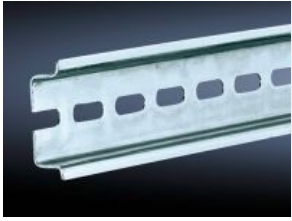


Support rails TS 35/7.5 to EN 60 715 for KL, KL-HD, AE

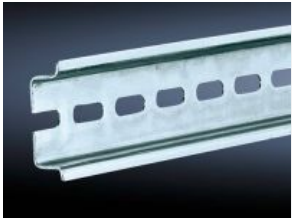


Weitere Informationen zu diesem Produkt

» www.rittal.com/com-en/Support_rails_TS_35/7.5_to_EN_60_715_for_KL,_KL_HD,_AE



Support rails TS 35/7.5 to EN 60 715 for KL, KL-HD, AE



Support rails TS 35/15 to EN 60 715 for KL, AE

Rittal – The System.

Faster – better – everywhere.

- Enclosures
- Power distribution
- Climate Control
- IT Infrastructure
- Software & services

Rittal GmbH & Co. KG
Postfach 1662 · D-35726 Herborn
Phone: +49 (0) 2772 505-0 · Fax: +49 (0) 2772 505-2319
E-Mail: info@rittal.com · www.rittal.com

ENCLOSURES

POWER DISTRIBUTION

CLIMATE CONTROL

IT INFRASTRUCTURE

SOFTWARE & SERVICES



FRIEDHELM LOH GROUP