

# Rittal – The System.

Faster – better – everywhere.

## ► Mounting plates for KL and KL-HD – KL 1560.700

Date : Mar 17, 2014

ENCLOSURES

POWER DISTRIBUTION

CLIMATE CONTROL

IT INFRASTRUCTURE

SOFTWARE & SERVICES

FRIEDHELM LOH GROUP



# Mounting plates for KL and KL-HD – KL 1560.700

created : 17.03.2014 on [www.rittal.com/com-en](http://www.rittal.com/com-en)



## Product description

### Description:

- For component installation outside of the enclosure. Assembly screws included as accessories with the enclosure.

### Material:

- Sheet steel, 2.0 mm

### Surface finish:

- zinc-plated

### Packs of:

- 1 pc(s).

### EAN:

- 4028177010000

### Customs tariff number:

- 73269098

## Product features

### To fit:

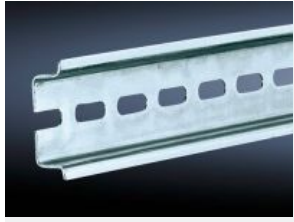
- Enclosure type: KL
- KL-HD
- Width: 150 mm
- Height: 150 mm

## Downloads

### Data sheets:

-  [Technical details \(EN\)](#)

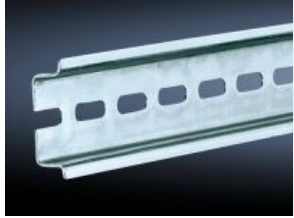
Please note that there are the following alternative products:



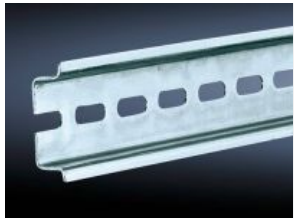
**Support rails TS 35/7.5 to EN 60 715 for KL, KL-HD, AE**

Weitere Informationen zu diesem Produkt

» [www.rittal.com/com-en/Support\\_rails\\_TS\\_35/7.5\\_to\\_EN\\_60\\_715\\_for\\_KL,\\_KL\\_HD,\\_AE](http://www.rittal.com/com-en/Support_rails_TS_35/7.5_to_EN_60_715_for_KL,_KL_HD,_AE)



Support rails TS 35/7.5 to EN 60 715 for KL, KL-HD, AE



Support rails TS 35/15 to EN 60 715 for KL, AE

# Rittal – The System.

---

**Faster – better – everywhere.**

- Enclosures
- Power distribution
- Climate Control
- IT Infrastructure
- Software & services

Rittal GmbH & Co. KG  
Postfach 1662 · D-35726 Herborn  
Phone: +49 (0) 2772 505-0 · Fax: +49 (0) 2772 505-2319  
E-Mail: [info@rittal.com](mailto:info@rittal.com) · [www.rittal.com](http://www.rittal.com)

ENCLOSURES

POWER DISTRIBUTION

CLIMATE CONTROL

IT INFRASTRUCTURE

SOFTWARE & SERVICES



FRIEDHELM LOH GROUP