

Rittal – The System.

Faster – better – everywhere.

Wall mounting bracket for KS – KS 1483.010

Date : Mar 17, 2014

ENCLOSURES

POWER DISTRIBUTION

CLIMATE CONTROL

IT INFRASTRUCTURE

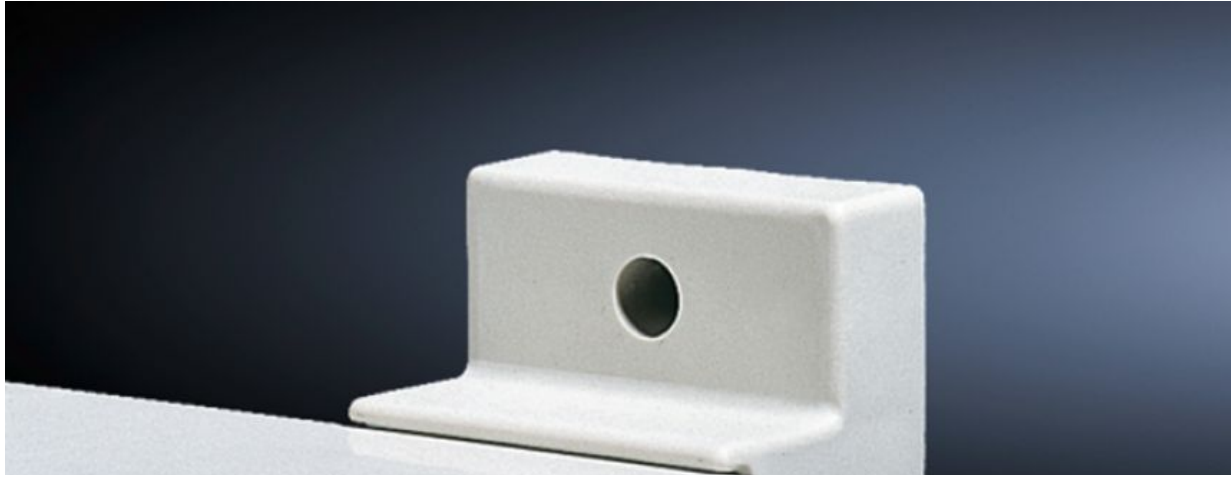
SOFTWARE & SERVICES

FRIEDHELM LOH GROUP



Wall mounting bracket for KS – KS 1483.010

created : 17.03.2014 on www.rittal.com/com-en



Product description

Description:

- For attachment to the wall, only possible from the outside of the enclosure.

Material:

- Fibreglass-reinforced polyamide

Colour:

- Similar to RAL 7035

Supply includes:

- Assembly parts for mounting on the enclosure.

Packs of:

- 4 pc(s).

EAN:

- 4028177526808

Customs tariff number:

- 39269097

Product features

To fit:

- Enclosure type: KS

Rittal – The System.

Faster – better – everywhere.

- Enclosures
- Power distribution
- Climate Control
- IT Infrastructure
- Software & services

Rittal GmbH & Co. KG
Postfach 1662 · D-35726 Herborn
Phone: +49 (0) 2772 505-0 · Fax: +49 (0) 2772 505-2319
E-Mail: info@rittal.com · www.rittal.com

ENCLOSURES

POWER DISTRIBUTION

CLIMATE CONTROL

IT INFRASTRUCTURE

SOFTWARE & SERVICES



FRIEDHELM LOH GROUP