

Rittal – The System.

Faster – better – everywhere.

► Terminal boxes KL without gland plate – KL 1504.510

Date : Mar 17, 2014

ENCLOSURES

POWER DISTRIBUTION

CLIMATE CONTROL

IT INFRASTRUCTURE

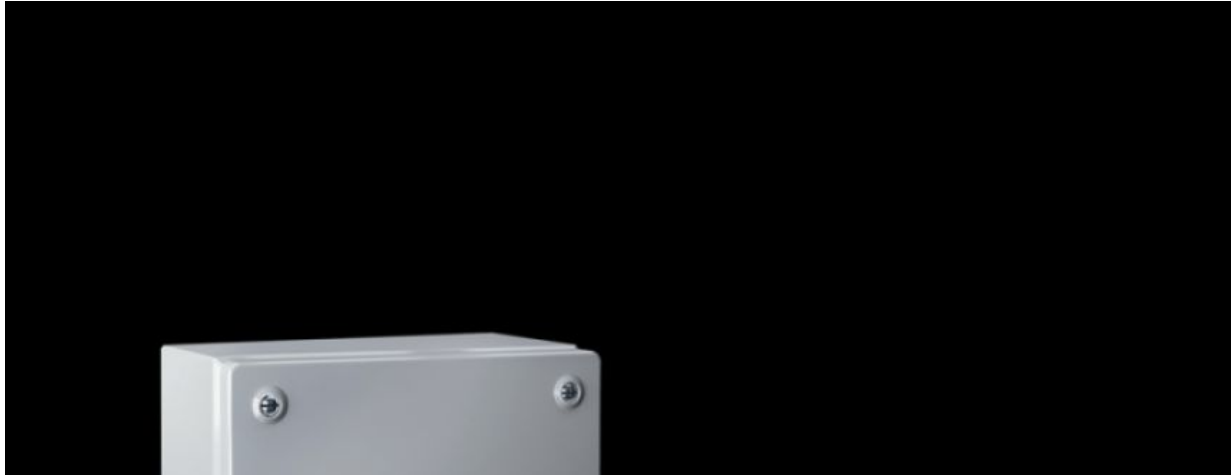
SOFTWARE & SERVICES

FRIEDHELM LOH GROUP



Terminal boxes KL without gland plate – KL 1504.510

created : 17.03.2014 on www.rittal.com/com-en



Product description

Material:

- Enclosure: Sheet steel
- Cover: Sheet steel, all-round foamed-in PU seal

Surface finish:

- Enclosure and cover: Dipcoat primed, powder-coated on the outside, textured paint

Colour:

- RAL 7035

Protection category IP to IEC 60 529:

- IP 66

Protection category NEMA:

- NEMA 4

Supply includes:

- Enclosure with cover
- Quick-release fastener including plastic bushes

Packs of:

- 1 pc(s).

EAN:

- 4028177251168

Customs tariff number:

- 94032080

Product features






Dimensions:

- Width: 400 mm
- Height: 200 mm
- Depth: 120 mm



Weight:

- 3.6 kg


Approvals**Approvals:**

-  [Bureau Veritas \(EN\)](#)
-  [VDE \(EN, DE\)](#)
-  [UL \(EN\)](#)
-  [TÜV \(EN\)](#)
-  [TÜV \(DE\)](#)
-  [Russian Maritime Register of Shipping \(RU, EN\)](#)
-  [Lloyds Register of Shipping \(EN\)](#)
-  [C-UL \(EN\)](#)
-  [CSA \(EN\)](#)
-  [Germanischer Lloyd \(EN\)](#)

Declarations:

-  [Manufacturer's declaration \(EN, DE\)](#)
-  [Declaration of conformity \(EN, DE\)](#)

Downloads**Documentation:**

-  [Instructions \(EN, DE\)](#)

CAD drawings:

- Request

Please note that there are the following alternative products:

**Terminal boxes KL with gland plate**

Weitere Informationen zu diesem Produkt

» www.rittal.com/com-en/Terminal_boxes_KL_with_gland_plate

**Terminal boxes KL Stainless steel**

Weitere Informationen zu diesem Produkt

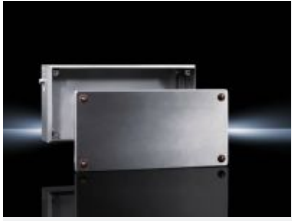
» www.rittal.com/com-en/Terminal_boxes_KL_Stainless_steel

**Hygienic Design Terminal boxes HD**



Weitere Informationen zu diesem Produkt

» www.rittal.com/com-en/Hygienic_Design_Terminal_boxes_HD



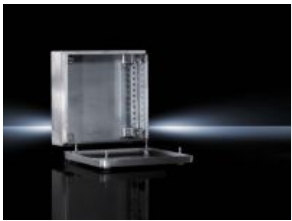
Ex enclosures Stainless steel, empty enclosure with screw fastened cover

Weitere Informationen zu diesem Produkt

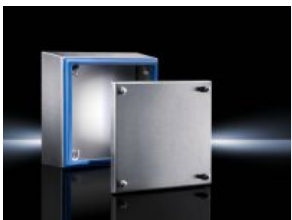
» www.rittal.com/com-en/Ex_enclosures_Stainless_steel,_empty_enclosure_with_screw_fastened_cover



Terminal boxes KL with gland plate



Terminal boxes KL Stainless steel



Hygienic Design Terminal boxes HD



Ex enclosures Stainless steel, empty enclosure with screw fastened cover

Rittal – The System.

Faster – better – everywhere.

- Enclosures
- Power distribution
- Climate Control
- IT Infrastructure
- Software & services

Rittal GmbH & Co. KG
Postfach 1662 · D-35726 Herborn
Phone: +49 (0) 2772 505-0 · Fax: +49 (0) 2772 505-2319
E-Mail: info@rittal.com · www.rittal.com

ENCLOSURES

POWER DISTRIBUTION

CLIMATE CONTROL

IT INFRASTRUCTURE

SOFTWARE & SERVICES



FRIEDHELM LOH GROUP