

Power supply unit - EG 45-PS-230AC/ 5DC/250 - 2940676

Please be informed that the data shown in this PDF Document is generated from our Online Catalog. Please find the complete data in the user's documentation. Our General Terms of Use for Downloads are valid (<http://phoenixcontact.com/download>)




DIN rail power supply unit, secondary-switched, input 230 V AC, output 4-13 V DC/250 mA, pre-setting 5 V DC

The illustration shows version EG 45-PS-120AC/ 5DC/250



Key commercial data

Packing unit	1 pc
GTIN	 4 017918 080198
Weight per Piece (excluding packing)	528.9 GRM
Custom tariff number	85044082
Country of origin	Germany

Technical data

Dimensions

Width	45 mm
Height	107 mm
Depth	77 mm

Ambient conditions

Degree of protection	IP20
Ambient temperature (operation)	0 °C ... 60 °C

Input data

Nominal input voltage	230 V AC
AC frequency range	50 Hz ... 60 Hz
Nominal power consumption	approx. 8 VA
Power failure bypass	35 ms

Power supply unit - EG 45-PS-230AC/ 5DC/250 - 2940676

Technical data

Input data

Input fuse	0.4 A (slow-blow TR 5, internal, solderable)
------------	--

Output data

Nominal output voltage	4 V DC $\pm 2\%$ (can be set up to 13 V DC. Default 5 V DC $\pm 4\%$)
Output current	250 mA
Residual ripple	< 100 mV _{PP}
Type of protection	Electronic disconnect at 1.3 x IN
Protective circuit/component	Varistor

General

Net weight	539 g
Operating mode	100% operating factor
Test voltage input/output	4 kV AC
Mounting position	On horizontal DIN rail
Assembly instructions	Can be aligned with spacing = 10 mm

Connection data, input

Connection method	COMBICON plug-in screw terminal block
Conductor cross section solid min.	0.2 mm ²
Conductor cross section solid max.	2.5 mm ²
Conductor cross section stranded min.	0.2 mm ²
Conductor cross section stranded max.	2.5 mm ²
Conductor cross section AWG/kcmil min.	24
Conductor cross section AWG/kcmil max	14
Stripping length	8 mm
Screw thread	M3

Connection data, output

Connection method	COMBICON plug-in screw terminal block
Conductor cross section solid min.	0.2 mm ²
Conductor cross section solid max.	2.5 mm ²
Conductor cross section stranded min.	0.2 mm ²
Conductor cross section stranded max.	2.5 mm ²
Conductor cross section AWG/kcmil min.	24
Conductor cross section AWG/kcmil max	14
Stripping length	8 mm

Power supply unit - EG 45-PS-230AC/ 5DC/250 - 2940676

Classifications

eCl@ss

eCl@ss 4.0	27040702
eCl@ss 4.1	27040702
eCl@ss 5.0	27049002
eCl@ss 5.1	27049002
eCl@ss 6.0	27049002
eCl@ss 7.0	27049002
eCl@ss 8.0	27049002

ETIM

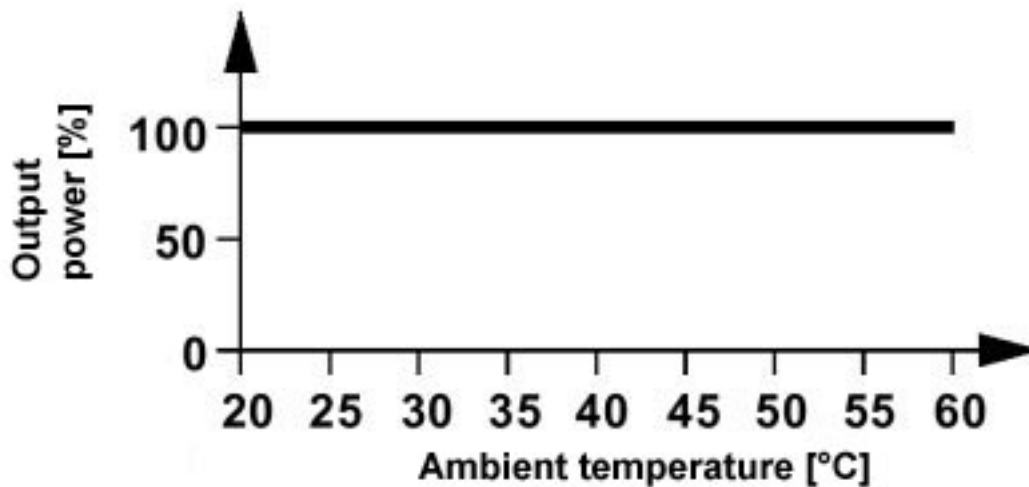
ETIM 2.0	EC001039
ETIM 3.0	EC001039
ETIM 4.0	EC000599
ETIM 5.0	EC002540

UNSPSC

UNSPSC 6.01	30211502
UNSPSC 7.0901	39121004
UNSPSC 11	39121004
UNSPSC 12.01	39121004
UNSPSC 13.2	39121004

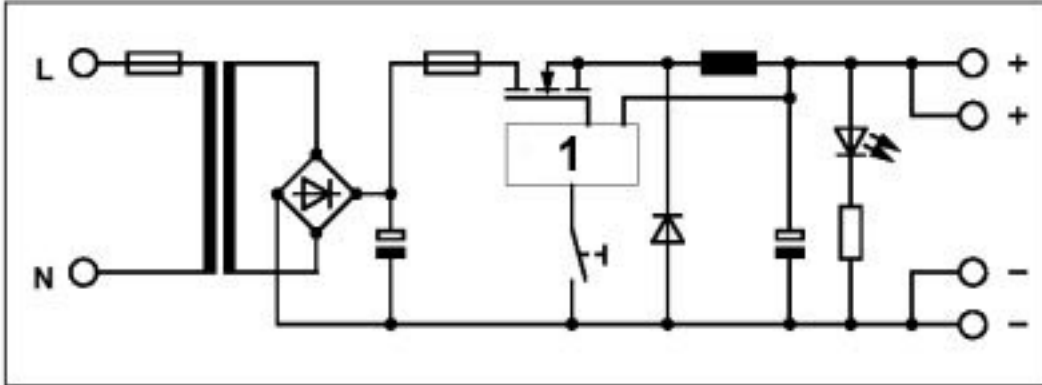
Drawings

Diagram



Power supply unit - EG 45-PS-230AC/ 5DC/250 - 2940676

Circuit diagram



1 = switched-mode regulator