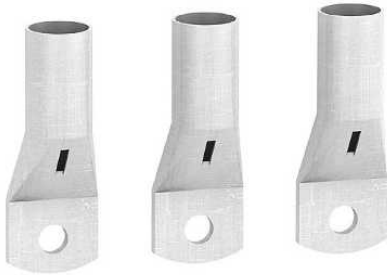


## LV432500

3 crimp lugs - for copper cable 240 mm<sup>2</sup> and phase barriers



### Main

Range of product	INF200...800 INS320...630 INSJ400 INV320...630 ISFT250...630 NSX400...630 Easypact CVS400...630 NSX400...630 DC
Device short name	Crimp lugs
Accessory / separate part type	Connection accessories
Poles description	3P
Quantity per set	Set of 3
[In] rated current	630 A
Conductor material	Copper
Connections - terminals	Cable connector 240 mm <sup>2</sup>

### Complementary

### Environment

### Offer Sustainability

Sustainable offer status	Green Premium product
RoHS	Compliant - since 0818 - Schneider Electric declaration of conformity
Product environmental profile	Available
Product end of life instructions	Need no specific recycling operations

The information provided in this documentation contains general descriptions and/or technical characteristics of the products contained herein. This documentation is not intended as a substitute for and is not to be used for determining suitability or reliability of these products for specific user applications. It is the duty of any such user or integrator to perform the appropriate and complete risk analysis, evaluation and testing of the products with respect to the relevant specific application or use thereof. Neither Schneider Electric Industries SAS nor any of its affiliates or subsidiaries shall be responsible or liable for misuse of the information contained herein.